

227

ENGINEERS
FIELD BOOK
No. 43 F

Note: This book belongs to John W.
Curo - Jenkins Minn.
If lost, finder please return for
reward. John W Curo.
May 10-1934

Pine Mountain Lake Reservoir 17-14
Pelican Lake levels Bobson 15 to 36-123 to 126
Viola Robinson Stirwalt Coma 37 to 50
Fred Seekel - Ellis - McKown - Kimball
Johnson - Staley 51 to 122
Pelican Lake Levels Bobson 123-126
Williamson - McKown 127-129
Fritz Seekel - his Will 130-132
Seekel Plat 133-158 Full Book

Addresses in Seekel plat
Seekel - Resort Pg 156
Ellis

Seekel + Duff Kimbell 156-158
A.C. McEwen 137-27 - 62-73

Ties

11/16 Can So Hall 7-13727
on Page III This book

PRELIMINARY SURVEY
OF
PINE MOUNTAIN LAKE RESERVOIR

CORO ENGR. SERVICE
JENKINS MINN.

See Bk 226 p. 3 for topography
notes made June-1930 see
copy of said notes on p. 10 of this book

①

Sat - Dec - 27 - 1930

Inst on Sta. 2 F.S. to Sta. 1 Bl. of top of stake

H. 1 = 105.75 / 100.75

R 211°	140	5.4	E. side of Creek	at 100.3
outlet				
R 225	160	5.7	S. side of lake	100.0
R 245°	185	5.7	" "	100.0
R 247°	345	5.7	" " " "	100.0
R 247° 20	450	5.7	" " " "	100.0
R 252°	480	5.7	" " " "	100.0
R 259° 30	440	5.7	low land S. of lake	100.0
R 275°	470	3.8		102.0
R 274° 55	4.75	2.75	B.M. on Root of 16"	103.0
TREE	tree on timber line S. of lake			
R 279°	500	3.2	in timber	102.5
R 285	515	4.2	in timber	101.5
R 287°	540	3.3	" "	102.4
R 296°	530	2.3	" "	103.4
R 278°	345	2.5	timber line	102.2
✓ R 289°	190	3.7	" "	102.0
✓ R 307	150	4.0	" "	101.7
° R 327°	160	3.9	" "	101.8
✓ R 339°	260	3.8	" "	102.0
✓ R 339°	350	2.0	" "	103.7
✓ R 331°	380	1.7	" "	104.0
° R 325°	420	1.2	" "	104.5

H. 1.2 105.75

(2)

R 320°	380'	2.0	in timber	103.7
R 311°	315'	3.8	" "	102.0
R 300°	350'	3.3	" "	102.4
R 20°	180'	4.0	timber line	101.7
R 270°	128'	3.6	N. " "	102.1
R 61°	140'	4.1	N. " "	101.6
R 84°	220'	2.2	N. " "	103.5
R 98°	340'	3.1	" "	102.6
R 100°	320'	4.6	in meadows	101.1
R 67°	270'	3.8	S. edge of timber	102.0
R 59°	300'	3.7	" " "	102.0
R 47°	275'	4.0	" " "	101.7
R 31°	250'	3.5	" " "	102.2
R 20°	250'	2.5	pt. of timber	103.2
R 50°	150'	3.4	in timber	102.3

} timber
S. of Creek

Set B.M. on 10" Dead Elm S. side of
Creek 200' E. of outlet. El. 105.0 notch in
tree.

R 134° 43' 635 5.6 Sta. 4 N 85° W. 100.1
R 0° 0 5.0 = El. of Hub at Sta. 2 100.75

Bearing of Line Sta. 2 to Sta. 1 = S 39° 30' E

(3)

1105.757

R 320° 08' 577.075

Sta. 3 on Ridge

T.P. 0.75

105.0

1113.57

8.57

Inston Sta. 3 F.S. to Sta. 2

H. 1 = 1113.57 Est. Sta. 3 = 113.57 - 7.96 = 105.6

✓ R 55°	77	9.3	W. side of Ridge	Bot. 104.3
✓ R 72°	70	3.6	Top u " "	110.0
✓ R 99°	73	8.6	E side " "	Bot. 105.0
✓ R 90°	163	5.8	E " " "	Bot. 107.8
✓ R 84°	160	4.0	Top u " "	109.6
✓ R 76°	170'	9.6	W side u " "	Bot 104.0
✓ R 87°	250'	10.0	W u " "	103.6
✓ R 93°	245	2.6	Top u " "	111.0
✓ R 97°	240'	5.7	E side u " "	Bot. 107.9
✓ R 106°	400'	7.8	E u " "	105.8
✓ R 103°	400	6.0	Top of Ridge	107.6
✓ R 100°	430	10.3	W side of Ridge	Bot. 103.3
✓ R 109°	550'	5.4	Bot of Ridge E side	108.2
✓ R 109° 20'	590'	4.8	Top of Ridge	108.8
✓ R 108° 20'	620	2.5	W side of Ridge	Bot 106.1
✓ R 180°	20	9.0	E u " "	104.6
✓ R 0°	30	9.0	W u " "	104.6
✓ R 225	72	9.0	E u " "	104.6

113.57

(4)

R 238°	70	6.7	Top of Ridge	106.9
R 252°	70'	12.5	W. side of Ridge	101.1
R 252° 20	112	11.6	W " " "	102.0
R 239° 20'	105	7.9	Top of Ridge	105.7
R 225° 40	116'	11.3	East side of Ridge	102.3
R 226°	126'	14.8	Left Bank of Creek	98.8
R 249°	126'	14.7	" " " "	98.9
R 274° 30	100'	10.7	low land. W. of Ridge	104.9
R 313°	96'	10.5		103.1
R 314°	180'	11.7		101.9
R 312°	260'	13.8	Left Bank of Creek	99.8
R 295°	253	13.8	" " " "	99.8
R 295° 40'	196'	13.5	" " " "	100.1
R 275°	172'	13.0	" " " "	100.6
R 263°	160	14.6	Left Bank of Creek W. side of old	
257° 40'	160'	14.6	Dam Bed.	99.0
R 277° 30	45	10.0		103.6
R 320°	57	9.7		103.9
R 242° 40'	210'	9.1		104.5
R 239°	200'	13.9	Right bank of Creek	99.7
R 247° 30	218'	14.3	Right Bank of Creek	98.3
R 255° 40'	212	15.0	" " " " " Ice	98.6
R 262°	192	14.3	Right Bank of Creek at Dam	99.3
R 266° 30'	190	14.3	" " " "	99.3

(5)

113.57

$$\begin{array}{r} 112.05 \\ 106.82 \\ \hline 5.23 \end{array}$$

R 271° 270'			Right Bank of Creek	
✓ R 278° 20' 294			" " " "	
✓ R 285° 300'			" " " "	
R 294° 40' 285			" " " "	
R 275° 20' 300	6.2	Top of Bank	117.4	107.4
R 268 280'	5.0	" " "		108.6
R 264° 25' 230'	6.7	" " "		106.9
R 252° 20' 260'	12.3	Pat E		101.3
R 252° 20' 280'	7.3	Top of Bank		106.3

Note ~~Level~~ Ground is level 100' ~~sof~~
above slot.

R 292° 35' 345 6.75 Sta. 1 106.82

Inst on Sta. 1 F.S. to Sta. 2

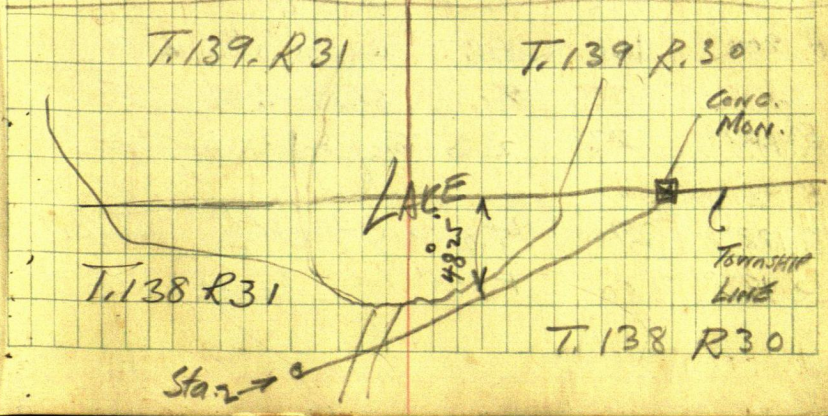
El. Sta. 1 = 106.82 H.I. 5.23 H.L. 112.05

H. 1st Sta. 12 112.05

R 64° 65	12.1	Water in Creek		100.0
R 338° 33	9.6	Pat of Slope		102.4
R 294° 190'	9.2	" " "		102.8
R 284° 185	6.1	Top " "		106.0
R 257° 143	4.2			107.8
S 280° 20	6.0			106.0

$H.I. = 112.05$

R 268°	80'	3.8		108.2
R 139°	125	3.4		108.6
Note ground east of these slits level				
R 356°	160	10.3	low	101.7
R 336°	170'	8.2	Top	102.8
R 333°	140'	9.6	low	102.4
R 308	235	9.6	low	102.4
R 314°	255	7.5		104.5
R 303°	400	7.3		104.7
P 302°30'	580'	8.4		103.6
R 293°21'	410'	10.2		101.8
R 290°30'	610	9.0	Edge of timber & brush	103.0
R 286°	500'	6.4		105.6
R 281	400	6.0		106.0
R 271°	300'	5.0		107.0
R 288°30'	610.3	6.2	Iron Mon at 1/16 in.	
at fence cor. Sta 5				105.85



9) East on Conc. Mon. on Township line

F.S. due W. along Township line

El. top of Mon = 102.45 H. = 483

1106.58

R 334°30	350'	6.6	water line of lake	100.0
R 341°	230'	6.6	" " " "	100.0
R 6°	200	6.6	" " "	100.0
R 56°	220'	6.6	" " "	100.0
R 53°	380'	6.6	" " "	100.0
R 66°	430'	6.6	" " "	100.0
R 68°	570	6.6	" " "	100.0

R 87°	520	5.8	Brush line Solid Good	100.8
R 94°	320'	5.8	" " " "	100.8
R 101°	160'	5.8	" " "	100.8
R 102°	80'	5.5	" "	101.1
R 115°	65	4.5	" "	102.1
R 298°	120	4.9	" " "	101.7
R 298°	330'	5.5	" "	101.1
R 286	360'	5.0	Timber line	101.6
R 272°	250	4.2	" "	102.4
R 251°	166	5.2	" "	101.4
R 200°	120'	4.6	" " Join with this shot follow line	102.0
R 187°	230'	2.3	Top of small ridge	104.3
R 188°	270'	4.0	in timber	102.6
R 193°	350'	+1°10'	Top of Ridge	109.5

106.58

E. of Cons. Mon.

(8)

- R 221° 250' 2.2 in timber 104.4
- R 221° 310' +1°15' Top of Ridge 109.3
- R 144° 410' Top of Ridge 105.5
- R 105°57' 430.0 3.8 Sta. 6 102.78

→ A. top stake

Inst on Sta. 6 F.S. to Cons. Mon. East NC. on Township line H. 12 4.47

H. 12 102.78 + 4.47 107.25

- R 4°30 188' 5.0 Top of Sea Wall 102.2
- R 359° 165' 3.1 101.1
- R 95° 50' 6.0 101.2
- R 96° 60' 5.0 Top of Sea Wall 102.2
- R 143° 130' 5.3 " " " " 102.0
- R 154° 120' 6.2 " " " " 101.0
- R 160° 265' 6.4 " " " " 100.8
- R 156°30 270' 5.6 Top " " " 101.6
- R 172° 200' 5.8 101.4
- R 190° 90' 4.7 ————— 102.5
- R 213° 48' 5.1 102.1
- R 325° 105' 5.8 101.4
- R 328° 210' 5.4 101.8
- R 318° 290' 4.4 102.8
- R 309° 290' 2.8 104.4
- R 299° 240' 3.4 103.8

(9)

$$\boxed{107.25} = H_{11}$$

R 284°	150'	3.0		104.2
R 252°	110'	4.0		103.2
R 252°	240'	5.3		102.0
R 252°	270'	3.2	Top of Ridge	104.0
R 252°	370	3.2		104.0
R 252°	420		same elev as high	104.0
ridge 400' S. of this pt. near township line				

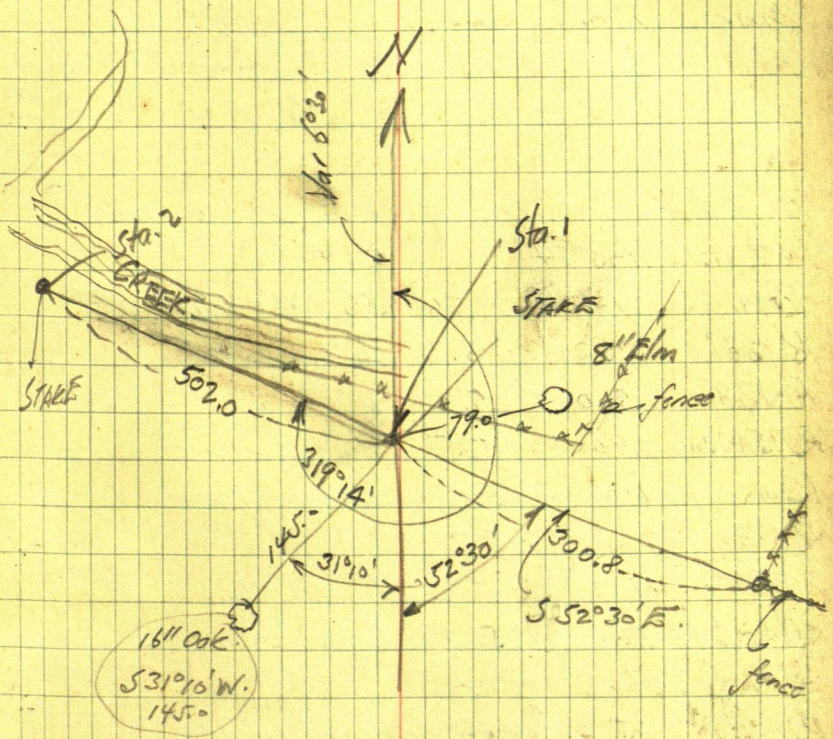
R 210° 20' 305 5.5 Sta. 7 N 46° E 101.75
LA

last on Sta 7 F.S. to 6

$$H_{11} = 5.2 \quad H_{11} = 5.2 + 101.75 = \boxed{106.95}$$

R 207°	55	4.0		102.9
R 207°	200	4.0		102.9
R 208°	300	+2° 10'		113.4
R 154°	110'	3.2		103.7
R 182°	220'	3.2		103.7
R 143°	100'	4.8		102.1
R 128°	195	2.3		104.6
R 118°	190'	4.8		102.1
R 141°	190'	3.0		103.7
R 146°	265	3.9		103.0

COPY OF NOTES IN Bk 226 p. 3
SHOWING STATIONS 182 OF TOPOGRAPHY
SURVEY OF PINE MOUNTAIN LAKE



See p. 11 for topography notes
from Sta. 182. copied from Bk 226
p. 3

Inst on Sta. 1 F.S. due North.

R 319°14' 502. Sta. 2 on
right bank of creek 200' S. of outlet of
Pine Mountain lake.

Inst on Sta. 2 F.S. to Sta. 1

El. of water in Creek at outlet of lake = 100.0

H.1 = 105.54 5.54

R 191°	160	5.6	Sly side of Creek
R 158°	350	5.6	Ely side of lake
R 138°	500	5.6	" " "
R 354°20	90	5.5	Sly side of Creek.
R 6°	210	5.5	" " "
R 4°36'	295	5.7	" " "
R 354°	400	5.7	Nly side of River.
R 353°40	500	5.7	" " " also

El. of water in River.

R 14°	115	4.0	on hard ground.
R 20°	120	3.2	" " Nly pt. of path

of timber.

R 13°15'	177	4.0	
R 13°20'	240	2.7	
R 25°	250	2.45	
R 25°	123	3.4	in Timber
R 57°	155	3.4	in Timber.

R 85°30'	230'	2.7	Slypt of timber
R 97°20'	330'	2.8	on Dike
R 94°40'	265'	4.7	low land W. of dike.
R 330°30'	177'	3.3	In timber N. of River.
R 313°	190'	2.65	" " " " "
R 291°40'	182'	2.4	" " " " "

Inst on Sta. 2 F.S. to Sta. 1

R 260°40' 968.5 Conc. Mon on E. shore of lake on S. line of Township (T. 139 R. 30) on S.E. cor. of lake.

H. 105.75

Elev top of Conc. Mon on S. Township line ^{Red.} 333 102.45

Note: Above work done by Paul Newstrom & Doug. Town Rod working with John W. Curo

(15)

(1)

John W. Curo & James Reed
Curo Rod

Taking levels Bet Pelican Lake
Pelican Creek and Long Lake

Sections 1-2-3-4 9-10-11-12

136-28

Working For Bobson

See Field Book 218 P 17-18

Pelican Creek Levels
Babson

(16)

May 11-1931 (2) Monday

P.M. Reed and I drive to
Pelican Lake

2-3-10-11-136-28

Find 2X36" Iron Pipe in
south shoulder of Co Road

See Field Book No 218

Page 17-18

Note: This Iron pipe should go
3.60 ft N but we formerly used
it where Co Surveyor Knutson
set it

My ties to this pipe are as viz

Tel Pole 8°N 60°E 35.25

" " 10N 75°33'W 115.05

" " 9S 58°40'W 26.15

Fence Cor N 6° E 37.50

Var 11°30'

Note: Old US BT. Stumps seem to
show this cor 3.6 N but we use
it here

See Pg 17-18

Jahm W Cunn
Book 218.

(17)

(3)

May 11-1931 continued

Beg @ 2-3-10-11-136-28

Iron pipe Chari

East along Co road

3-6-9-12-1320 stake

Beg @ 1320 ch E 3-6-9-12-1320

= 2640 stake

@ 2640 + 61.7 = 2701.7 E &

Top road leads north

Beg @ 2640 ch E 3-6-9-12

1320 = 3960 stake

Beg @ 3960 ch E 3-6-9-12-1320

= 5280 stake

Knutson's line Running N
seems to be about 61.7 E?

Mr

goes with Reed and 280

rods & to an iron pipe and
tall pole set by Knutson for
S $\frac{1}{16}$ bet 1-2-136-28

continue: walk N to creek

$\frac{1}{4}$ bet 1-2-136-28

Net set corner in floating
bog so edge of creek.

Walk East along to side
of Pelican creek nearly

Bobson

④ Pelican
Creek Levels

⑱

half a mile to point for dam
silinear center of sec 1-
136-28

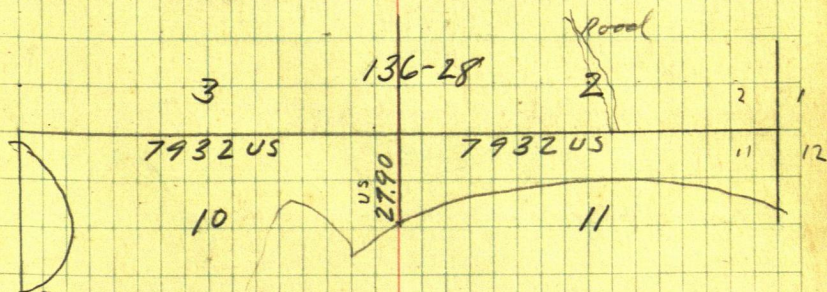
1-2-11-12-136-28

US Notes call for.

BP12S30E60	39.60 FT	BP10N71E34	22.44
BP10N21W48	31.68 FT	BP-S22W45-	29.70 FT

US Notes 1/4 Bet 2-11-

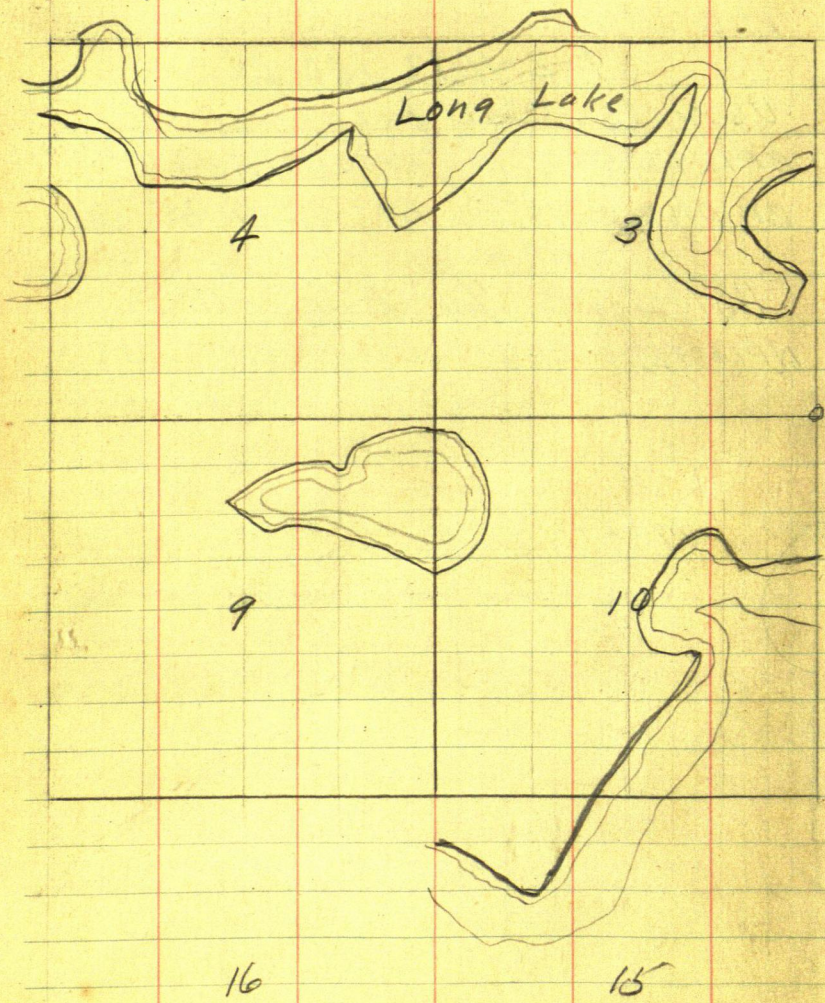
NP14S72 1/2 W 246 Dead P12N78W58



19

Pelican Lake Levels Bobson

5

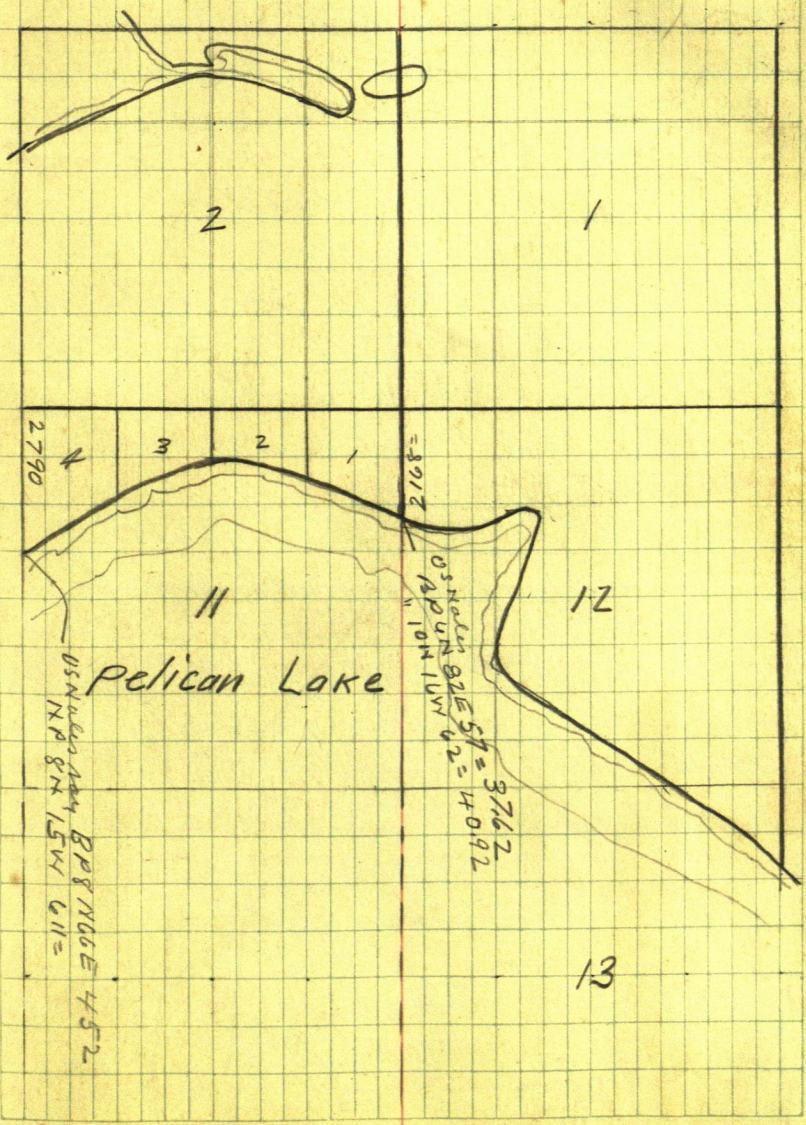


62
372
372
744

372
372
744

May 11 1931 (6)

136-28



May 12-1931 Tues

PM Reed and I to Beamed
call on Killingslad eat supper
Evening call on Pete Mogenson
Take in show at Beamed

May 13-1931 Wed PM

Reed and I drive to Pelican
Set X on so shoulder of road
near NW Cor Gov Lot 1 Sec 11-
136-28 Turn 90° to E W road
cut line to to Pelican Lake

at intersection of our line
with waters edge drive stake 1 1/4 by
18 inch oak Flush with top of
water near SW Cor Gov Lot 1.
Sec 11-136-28 Run

North on random 1/16 line West
side Lot 1.

Pelican
Creek.

⑧

Babson

Sec 11-136-28

10

9

8

812.25 N. TP #2

110.01

add wood

7

Gov Lot 2

Gov Lot 1

6

5

seawall

*

add wood

4

15.20 up

seawall

10.80 up

3

313.50 N

OT #1 El 106.76

#1.

BM 105.66

0.8m

5.00 up

2

seawall

1

*

2.50 up

seawall

Hut

540.00

Pelican Lake

Tap of water

23

Jack Coro
Reed " Rod

May 13
#2-1931

(9)

Sta	Running + S	H I	- S	Elev
Running North on West				
0				100.00
	North			
		6.86	106.86	
+60	"		5.76	101.10
+80	"		4.36	102.50
1.	"		5.16	101.70
+82	"		5.00	101.86
π 1+82.25	"		106.86	
2.	"		4.52	102.30
+20	"		4.26	102.60
+60	"		1.86	105.00
^{BM} 1. +92	"		1.20	105.66
3.				106.00
^{TP} 1. +13.50			0.10	106.76
π @ 5h +75.50				
			117.36	
		10.60	117.36	
3+43			6.60	110.76
+60			8.00	109.36
+80			5.36	112.00
4+30			2.16	115.20
+75			5.00	112.36
6+45			5.70	111.66
^{TP} 28+12.75			7.35	110.01

Note add 15 inches

11-136-28 H + B Transit 29
 Stadia Babson
 TO 136-28

Rod Dist	Remarks
	Line of Gov Lot 1-Sec 11-136-28
	Sta 0" = Top of wall Pelican L. Near SW cor Gov Lot 1 Sec 11
1.81 182.25	On sand beach
	On sea wall E-W
	On sand Beach
	On sand Under Transit
	Foot of sea wall
	Top sea wall
	B.M. SW side 6" SP 1.1/2 L. on short limb
	Sta 3 = Foot sea wall
1.49 150.25 182.25	= 313.50 N Hub in sand on line TP #1 = Hub on line
	Top of sea wall E-W
	Top of Old sea wall E-W
	Under π in old Road E-W
1.70 170	On line
3.36 337.25	Hub on line in Old E.W. Road
	Quit 7-15 pm John W. Curran

Note add 15 inches
 to rod reading = 1.25 ft

(25) May 15 - 1931 Reed and I

Sta	Running	+ S (11) H1	- S	Elev
TP 812.75	North			110.01
TP 974		2.19	112.20	
TP 760	2		117.20	2.70
TP 780				4.09 108.11
10.				9.50
11+40				7.70
11+60				8.40
1350.25 North				9.75 102.45

Zinst on Sta 1350.25 FS North
 $H1 + 4.55 \quad H1.455 + 102.45 = HI = 107.00$

North 10 // = Q EW Road - 4		4.6	102.40
BM = R 101° = 122 - 3.16		3.16	103.84
R 00° North 40 //		5.5	101.5
R 090° North 150 //		6.5	100.50
R 37° 225 //		7.50	99.50
TP R 270° West 432 //		1.56	105.44
TP R 90° East 360 //		5.56	101.44

Running East No stadia

TP	5.89	107.33	101.44
TP		0.25	107.08
	10.03	117.11	1.00 116.11

John W. Curo

(12)

Rod Dist.
1.60 161.25

BM² Oak slab 2' L @

1.65 166.25

375 376.25 = Hub TP. 10 ft. so of EW road

@ EW Road

BM = bottom limb 4" Pap cut short. low

Top of water top of plate so edge Pond
TP. so of road
TP so of Road

Hub so of road $\frac{400}{200}$ W of SECn sec #3
TP Hub near sec on so of road

(57)

(13)

May 15-1931. continued

Checking Levels

Beg @ Hub driven to top of water Pelican Lake @ SW Cor Gov Lot 2-11-136-28
Run North along E near Homestead

Sta	+ S	HI	- S	Elct	
O	10.38	110.38		100.00	Pelican L
TP			0.08	110.30	
	6.50	116.80	2.20	114.60	sea wall
TP at 1/4 Cor			8.18	108.62	
Then East on road to check on TP.					
	5.09	113.71	8.29	105.42	

Check on Hub 105.44 Pg 25
Close Check 0.02 off O.K.

To get levels of Long Lake
Beg @ TP @ 1/4 Cor Run
North on E sec 3-136-28 Road

BM TP					
O	4.24	112.86		108.62	N SEC or Field
TP	W. of road S. of hill		0.67	112.19	
TP	11.53	123.72	0.46	123.26	
	11.95	135.21	7.94		
BM	on root broken stump E of Road 1/4 S. half Sec			127.27	
TP			0.69	134.52	

14

Sta	+S	HI	-S	Elev
TP	1.74	136.26		134.52
BM			2.30	133.96

Top of East edge of Silo foundation X

Note: "Major" Prindell rcs N45W about 800 Ft, Lower edge of white strip at base of house is level with my T wire (136.26)

Bottom white strip SW Cor - 136.30
 " " " NE " 136.26

Half inch diff

Quit at sun down Reed and I home to Jenkins 7.00 PM.

Mattie-Alma-Reed and I to Beamed "Ten Nights in a bar room"

(29)

(15)

May 16-1931 Sat

Sheriff calls (via Geo La Zott)

Fred Reed says get Palloch as witness for 2-PM Trial

Reed Curo and I drive to Leslie Palloch farm 5 miles W-SW of Pine River - get "L T" and back to Jenkins 11-25 am \$2. To Palloch who goes to Bed on noon train 12-30

Spedom 17218.5 vs 17245.5 = 27.00 miles

First 20 miles @ 15c = 3.00

7 " " 10

$\frac{70}{\$3.70}$

To be pd

by Sheriff's office

Dinner at home

PM

Reed and I drive to Pelican @ creek Apr 1-15

From @ Sec 3-136-28 run

East along road

0 0-40 134.36 133.96

BM 7.42 126.94

On 12" J.P. Slump's Flat Top No Road about 200 E of Cen Sec 2-136-28

Sta	+ S	HI	- S	Elev	
TP		134.36	11.87	122.49	Peg N of Road ^{E of Hill}
TP	0.12	122.61	11.65	110.96	Peg N of Hill E Side
	0.46	111.42	9.56	101.86	In Marsh 700 FT W of Bridge N of Road
			8.56	102.86	In Road 700 FT W of Bridge
			9.22	102.20	In Road 100 W of Bridge
			9.90	101.52	In Marsh N of Road 100 FT W. of Bridge
BM			5.61	105.81	S. End of Bridge on Pelican Creek Top Corn
TP			4.27	107.15	Peg 125 FE of Bridge S Side Road
	11.72	118.87			100 ft S of 1/4 part E of Creek
TP			7.95	110.92	Peg E of Road
TP	4.04	114.96	9.69	105.27	Peg W of road S of Culvert
	6.69	111.96	11.16	100.80	Peg Top @ Top of wall Long L E End
				100.80	Long Lk May 16-1931
				100.00	Pelican L May 13-1931

Note: Clyde Hoyer meets Reed and I at Bridge shows us Hi water mark of 30 days ago before town board pulled out heavy dam. Also Hi water mark 0.48 of a foot below inside West end below lips of 16" culvert

9.97 102.00 Top of culvert W. end
 10.00 101.96 Top inside of culvert

Note: inside top was 0.48 above Hi water mark
 101.96 - 0.48 = 101.48

(31)

(17)

Sta	+s	HZ	-s	ELV	
		<u>111.96</u>			
			6.40	105.56	Road at culvert
			7.22	104.74	Top Post Dam
			9.42	102.54	Top Water Pel Farm
BM.			4.52	107.44	

BM. 107.44 E of Road 100 N of Culvert E end Long Lake

Note: at N. end of Bridge over Pelican Creek near Pel Long Lake is 3.10 below bottom of manger to top of water

A month ago water was .75 (9 inches) higher

Top of cement cen of Bridge on N side is 4.90 above water today

BM Top of cement so end of Bridge 105.81
3.39 109.20

Top of cement N end Bridge & creek 3.43 105.77

Top of water N End Bridge
105.77 - 4.90 = 100.87 ? Top of water

8.32 100 ft N 8.32 0.88 Top of water

200 ft down stream 9.84 99.36

May 17-1931 Sunday ¹⁸

11-30 AM. Alma Reed and I at
Pelican Lake - Adjust Gentry T

Cloudy - Heavy wind from SE
Try to find Sta. o.o. end of water
"no can catch" drive another peg
waves rolling

Sta	+ S	HI	- S	Elev	
0	10.25	110.25			Peg Top of water
TP1.			0.01	110.24	= 110.30 P ₁
Nat's	Call this			110.30	ald nat's OK
BM TP				110.30	
	0.01	110.31			
BM	6.74		4.33	105.98	RR SPIKE S E side 8" Pop 150 Ft SW Hamilton Res.
TP	6.94	117.24	1.01	110.30	T @ Hamilton House
BM.			2.53	114.71	RR SPIKE N side 5" oak Sta 20 to 25 ft SW Hamilton cottage
TP	3.85	113.31	7.78	109.46	RR SPIKE W of N.S. Road.
			4.72	108.59	On old TP @ 1/4 Cor (Mkd 108.62) 0.03 off
BM			4.20	109.11	RR SPIKE N E side 7" P 40's of 1/4 Cor Bet 3-11 Roads
TP.			4.84	108.47	RR SPIKE W of Road 500 W of 1/4 Cor
	3.35	111.82			
			6.70	105.1	W wheel track road 60 Rds W of 1/4 Cor
			0.63	111.19	oak Hub 15 FS of old T inside Hill cut in hill
TP			5.78	106.04	Hub NE in Meadow

work till 5:30 in rain 15^o to Mrs. Ira Johnstone for rhubarb
John W. Cuss

May 18-1931 Monday

10-9 AM. Alma Reed and I at Pelican Creek Run NE across meadow

Sta	+ S	HI	- S	Elev	
TP	4.09	110.13		106.04	Hub in Meadow
B.M.			2.86	107.27	W Root 16" Oak
TP	3.16	107.32	5.97	104.16	Peg in Meadow
TP	4.56	106.64	5.24	102.08	Peg in Meadow
TP	4.46	106.86	4.24	102.40	Peg in Meadow
B.M.	R.R. Spike thro 4" Oak E side of Land		3.93	102.93	W Side Meadow
			5.85	101.01	Peg in Meadow
	4.66	105.67			
Top of water in creek 1000' SE of Bridge - still light current					
			6.83	98.84	
Peg in creek 900' S of Bridge 0.05 above water					
			6.72	98.95	
Note: Water dropped 0.05 since May 16th. at time peg was set					
Creek 800' S of Bridge			6.72	98.95	
B.M.			3.77	101.90	
short stamp 2" twin Birch 4" Birch left standing 800' NSE of Bridge S of creek N edge meadow					
TP	4.40	105.98	4.09	101.58	Peg in Meadow
TP	6.29	107.61	4.66	101.32	Peg in Meadow
B.M.	Top of cern send ridge		1.86	105.75	
See Pg 30 - = 105.81 - 0.06 ft					
On old TP Pg 30			0.43	107.18	
= 107.15 vs 107.18 = 0.03 ft					
water 100' above Bridge			6.79	100.82	

Top of water at Bridge Below bottom of Iron girder-stringer is 3.15 below on west end and 3.05 on E End = 3.10 in center on N side

Note: Clyd Hoyer and H.C. (Clarence) Erickson own Fox Ranch here.

Note: Last Saturday Mr Hoyer was with us and says Game Com decided to let their two beaver dam the water to a point 3 1/2 feet below lower iron span of bridge at outlet of Long Lake

This would be crazy because it would be half a foot below what it is to-day and to-day it is 3/4 of a foot lower than it was last winter

22

36

Babson

The page contains a large grid of graph paper. The grid is composed of 20 columns and 30 rows of small squares. A vertical red line is drawn down the page, approximately one-fifth of the way from the left edge, creating a margin. The paper is aged and shows some staining and discoloration.

(37)

① July 18-1931

Robinson-Starwalt Survey
South Trelipe Twp Cass Co Minn
T139-27-5PM Secs 9-16

July 18-1931 Sat PM. I take Dwight
Curo Sr. to Brainerd Meet

O.F.? Van Doren of N. End Lk Edward
Meet Ed Baine. meet also

Vilous Robinson who wants rough
timber survey -- all of NW 1/4-16
and SW 1/4-9-139-27

Vilous Robinson (Timber partners

Louis Starwalt)

Bill Starwalt

Note: Jim Knutson lived there 20 years
knows BTS. @ Cor 2-3-10-11-139-27

I tell Robinson stat fixes my pay
@ \$15 a day and expenser - I will
give him two days for one and
promise to be at Emily Sunday
tomorrow morning or will telephone

McKinley goes to Benham with
Dwight & I. Reed in St Paul
Alma @ Rephant res Home alone
all night

Robinson
Starwalt
139-27

(38)

July 19-1931 Sunday ⁽²⁾

up @ 6-00 AM. Alma spent her first
night as nurse with Mrs. Ches
Kephart. 6-10 get Alma - 7-00
breakfast copy notes load car
9-00 Alma & I to Jenkins

to Alma with Mary & Sam Hamer

At Emily 10-30 AM. Call
Robinson who says too late to
start work. Robinson and lunch
comes 5 miles to Emily and we
drive to Crooked Lak Narrows to
Louis Starwalt store where we all
eat dinner with Starwalt

Plan our start for to-morrow I
to Jenkins. Stop at Harry
Bowman res and grind scythe
and axe. 25¢ to boy.

At Jenkins 5 PM.
write notes.

Jenkins To Narrows - Crooked Lake = 35 miles

(39)

US Notes - ³139-27

2-3-10-11-139-27

Tam 8N18E25 = 16.50 Spr 7N30W20 = 13.20

Tam 10S65E5 = 3.30 JP8S41W22 = 14.52

3-4-9-10-139-27

R. Oak 5N75E4 = 2.64 WP40N65W14 = 9.24

Maple 6S50E9 = 5.94 WP40S30E10 = 6.60

4-5-8-9-139-27

W. Maple 6N50E42 = 27.72 W. Maple 6N70W27 = 17.82

" " 6S70E25 = 16.50 " " 6S20W73 = 48.18

5-6-7-8

W Birch 6N69E17 = 11.22 WP20S33E50 = 38.00

" " 6S58W28 = 18.48 W. Birch 6N56W21 = 13.86

10-11-14-15

Maple 7N56E30 = 19.80 W.P. 40N10W24 = 15.84

Ironwood 5S20E16 = 10.56 WP35S40W8 = 5.28

9-10-15-16

Tam 5N55E5 = 3.30 Tam 6N60W13 = 8.58

Birch 6S35E14 = 9.24 " 6S62E43 = 28.38

8-9-16-17

R. Maple 10N55E44 = 29.04 R. Maple 10N20W50 = 33.00

Bass 12S25E 36 = 23.76 W. " 8S35W 58 = 38.28

7-8-17-18

Maple 10N25E 92 = 60.72 WP10N62W17 = 11.22

WP653E 82 = 54.12 Maple 8S15W 94 = 62.04

14-15-22-23

WP6N57E42 = 27.72 YP14N55W43 = 28.38

WP28S15E86 = 56.76 Asp-S10W83 = 54.78

15-16-21-22

WP30N27E33 = 21.78 W. Maple 6N62W12 = 7.92

Maple 6S35E 36 = 23.76 " " 6S62E43 = 28.38

16-17-20-21

Tam 4N52E15 = 9.90 WB5N25W67 = 44.22

" 6S45E280 = 184.80 Tam 4S5W47 = 31.02

17-18-19-20

Oak 5N55E10 = 6.60 Birch 7N30W25 = 16.50

Maple 8S45E28 = 18.48 Oak 6S65W16 = 10.56

Starwalt
Robinson

(40)

US Notes - 139-27 (4)

H-Y@3=	14-3-10	R.00K7N75W5= M0P1K6S15E30=
4	" 4-9	W3838E20= ASP9N30W5=
5	" 5-8	TAM6N20E10= 6.60 YB65K3E10= 6.60
6	" 6-7	CEA8N50E14 " 6S37W 6=

41

5

July 20-1931 Monday

Up at 4 AM. @ 5:30 Lu Jenkins alone in my '30 Ford - Call at "Bennie" Jenkins old place Eat breakfast with Mr & Mrs Vilous Robinson and 7 months old baby.

Vilous goes in my car to Navarre To Louis Starvatt store - pick up Jack Anderson son of "Bob" and Gerold Charles Anderson¹⁸ son of Ray Anderson Des Moines I (Left Pequot 13 years ago) and 4 of us in my car drive 25 miles to SE Cor Sec 2-139-27 All take our own lunch Drive 80 rods west on old road to car park Iron pipe and tools to Cor 2-3-10-11-139-27 where we find tall stake and latter pole set in bog We find loose shell of 8" larn stump lying off row of stakes This shell has cut on inside "BT" mhd with jack knife Jim Knutson told Robinson this is old US B.T. but I think some mistake as corner poles do not check out with old stumps Cor must have been further west 100 ft?

As we checked & new road 6 miles so bet Secs 11-12-139-27 @ 6:40 we use Gully Compass 3rd Tape Run

Robinson
Starwalt
139-27

(42)

July 20-1931 Cor 6

Went bet 3 and 10-139-27 $\sqrt{6}^{\circ}E$ Chain thro
heavy brush @ about 100 to 150 cor solid
bit of land where the "Jack pine" called for
in US notes may have stood - we find 2-
up 15" dead one down. at about 450 to
open marsh "wet" entire heavy brush.

at 900 we are off 100 ft road line I go
back and bring up line compass line we
offset our chain and continue

Went bet 3-10-139-27 rough chain
Fair compass line $6^{\circ}E$ Heavy brush
Spot no line @ 2640 square up
5" dead Poplar stub

5280 look for cor 3-4-9-10-139-27
at 12-15 PM that no water satom brush
and look for two 40. inch WP stumps

Lots of big WP stumps here but none
we identify

Nate I believe this cor to

3-4-9-10 can be found too hot
to work and we go back to car drive

to pt near Longville and down old
grade Find Iron pipe at Twp Cor
NW Cor 139-27 4:50 PM

at 5 PM starts to rain we continue

(43)

⑦

South along old Cross Lake grade
At SW Cor 7-139-27 we met G. L. Blisner who
lives on NW NW 6-139-27 and Ralph Felton
who lives a few miles N.W. also a young man
Felton tries to put his finger on I m but
brush is too wet Note: Felton Helped Ben
Clark Subdivide the Whole Twp 139-28

They found no corners along the whole
East side except the two Twp Cors
and run from NE Cor 139-28. South 6 mi
to SE Cor. Then made corrections and
set capped Irons at all sec Cors and
pins at fully corners etc.

6:00 PM See big deer on old grade
Drive crew to Narrows get 4
gals gas from Lewis Starwalt

Jack Vilor and I eat supper
with Starwalt. Then I drive Vilor
12 or 13 miles home and return
to Narrows where I stay over night
with Starwalt. Sleep with Jack
Andrews 25¢ to

for water in my battery. 135 miles
drive to-day.

John W. Curo

Robinson
Starwalt
139-27
8

Time Sheet Working For Vilous Robinson And Louis Starwalt

@ \$ 7.50 and Expense = Half price

July 1931 18 19 20 21 22

John W. Curo
Mkts 1 1
Yc. 75
80 75
Car Miles 135 35
50c 25c
Expense 25 40

Vilous Robinson ? 1 1

TRUCK ? - 25

Jack Andrews 0 1 1

Gerald C. Anderson 1 1
0

(45)

(9)

July 21-1931 Tues

Vilos arrives with his truck
Wakes us at 6-AM. Jack & I eat
breakfast with Stairway Muff.
Bob Andrews, Chas Taylor &
3 men with truck and cooler
pass thro for Virginia & Dor to
pick blueberries. I still have
my old lunch the rest bring
their lunch and with Vilous.

Jack and Gerald Anderson in
my car we drive 26 miles to Cor

11-12-13-14-139-27

US Notes call for

Boss 5N 77E 24

asp 6N 40W 21

WMaple 6S 10E 41.

WMaple 8S 26W 48

Note: This corner was once set by
my surveyor in 1913. Wk

when he ran the six

miles so Bet 1 & 2 to 35-36

We find new graded road N-S-

139-27

Robinson
Starwalt

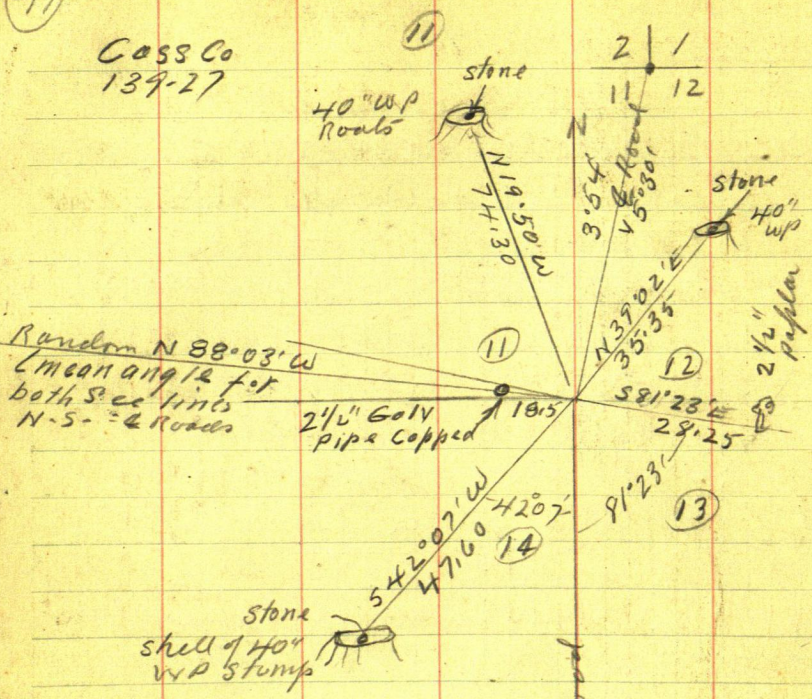
(46)

(10)

Time sheet Working for Viloes Robinson et

(47)

Cass Co
139-27



At 11-12-13-14 139-27

The Iron Mon was set
 18.50 West No chain let
 ditch shoulder 26.60 ft outside
 locate & grade line 2" pop Hub for
 true cor Lookins so for needs 9° 30'.
 Looking Non & road angles 3' 54" R.
 This using so Mile as meridian
 Stone in shell 40" WP stump. N 39° 02' E 35.35
 " " " 40" WP stp N 19° 50' W 74.30
 " " " 40" " " S 42° 07' W 47.60
 2 1/2" Pop S 81° 23' E 28.25
 Turned from line so

Robinson
Starwalt
139-27

(48)

July 21-1931

(12)

11-12-13-14. 139-27

Zm bear N 88° 03' W 18.50 to C.

Taking a mean course bet mile of
road N and mile of road S

$3^{\circ}54' \div 2 = 1^{\circ}57'$ Run

N 88° 03' W @ 18.50 pass thru Zm.

300 pm Drive 1 mile N eat out

Lunch PM continue

West 3-6-9-12 pm -

1250.0

1345

1065.50 Hub R.R. spike

1065.50

Tics: 6" W oak 5.60° W 3.35

1200 stake 1500 stake 1800 stake

1953.5 Hub R.R. spike

Pap 4 N 13° 30' W

Green 10" Oak stump N 79° 20' W

2150-2450-2700 stakes

2713.0 Hub R.R. spike in E Edge Swamp

Pap 10 S 74° 00' W 26.00

(49)

(13)

July 28-1931

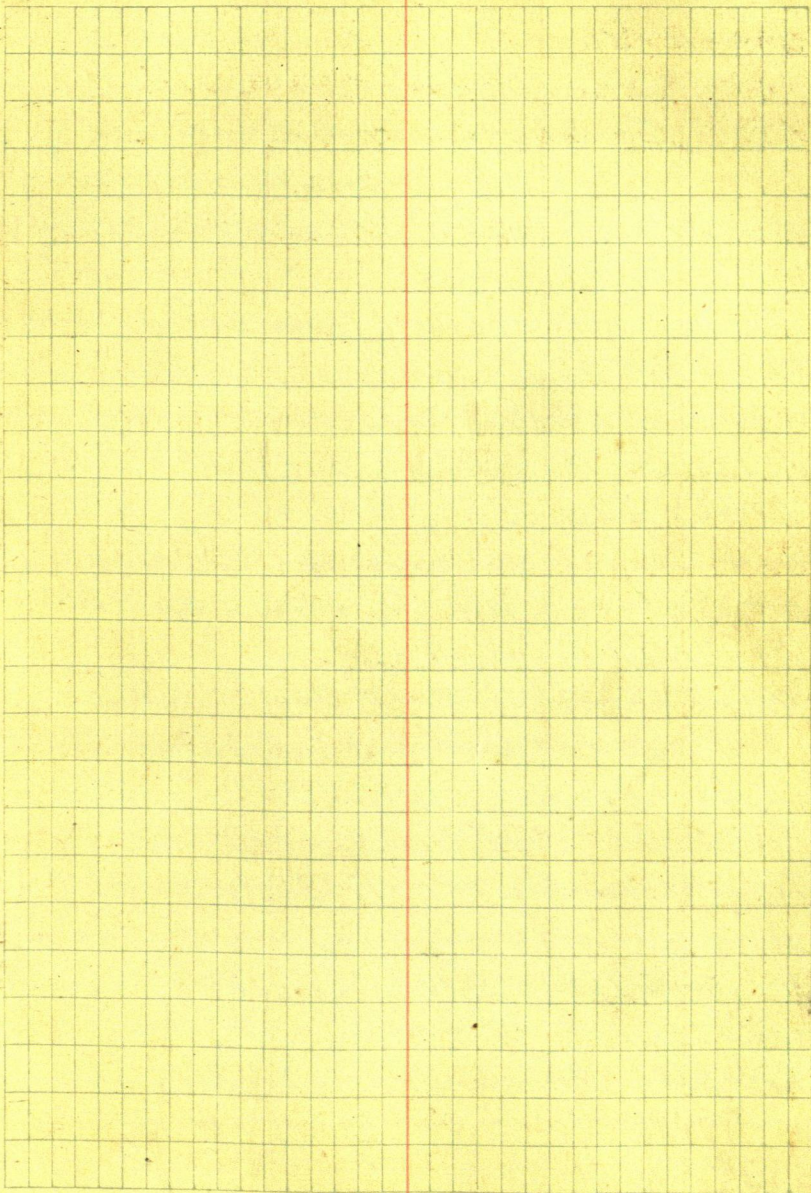
check to Louis Starwalt (to the son)

\$3.¹³ in full for Ges & c.

134-27
Cane

Robinson
starwalt
14

50



(51)

①

Sept 15-1931 Tues

Fred Seekel - Duff Kimball Etc.

Sec 10-137-27

Note: Continued From Book 33.

Note: I have made a survey
for Fred Seekel Shown on Page
131 to 144 Book 33.

As Seekel does not own all of
this land I have made arrangements
with Duff Kimball and Fred Seekel
to survey their land jointly for
\$150. each to pay \$75.

Note: Seekel still owes me \$25. for
work already done as shown by
Page 131 to 144 Book 33.

Arnold Seekel - Fred Seekel and I
cross in boat and cut out my old
line shown on Page 79-80-81-82-83
Book # 33. Old Nalis Say Mar 26-1925
West Random bet 7-18-137-27-@90° to

E Line Sec 18 On us

3-6-9-12-1320-15 Pft on in 1575 Sea
wall Island 1600 slake 1697.2 Hub
1700 slake Ties 1. Hub 1697.2 Ties
Arh 757°02'W 15.00 Dead with 5
582°05'W 20.90

Sept 15-1931 Cont'd

Arthur
Spearfish S.D. 52

Old Nalis cont'd (2)

West bet 7-18 cont'd - - - - -

1740 Lv. Island: $17 + 300 = 2000$ on ice

23-26-2640-2900 on ice + 150 = 3050

ft of sand 10' W of ice 10 E of hi bank

$2900 + 300 = 3200 - 75 = 3125$. Sub 60 d spike

on hi bank $32 + 3 = 3500 - 9.30 = 3490.7$

W 20 d spike in green 9" JP stump

3800 3880 Swamp in NE SW 4100 on ice

4360 Lv bog N-S- 44-4700-54.9 =

4645.1 Plug in 9" green JP stump - - -

$4700 + 11.2 = 4711.2 = 10'$ green JP stump

plug in top $4700 - 150 = 4850$ Stake

4925 ent Bog 5025. Lv N-S- 4850

+ 300 = 5150 Hat Cor ⁷⁻¹²⁻¹³⁻¹⁸ 137-27-28

$S 63^{\circ} 50' W 46.40 = 41.64 W 20.46 S$

5191.64 W Cor S ch No 20.46

5270.10 FT US = 5191.64 my chain 78.40

shot. in running random X over 3125

Focus E on NE Cor 18 Nalis on back shot

fell down and on line now cuts 0.15 of

a foot so of Hat 1697.2 Old Nalis above

Copied from Book 33.

3800
35
350

Jahn W. C. Co

53

3

Sept 15-1931 continued

Fritz Arnold and I dig up old
60' spike at Hut 3/25.00 W

We take New Ties viz

Poplar 8 N about 80° W 9.13 Ft ^{N 67° W} See p 963" 4 1/2 " 20 W 3.93 ^{S 12° 15' W}

To spots at base

Sept 16-1931 Wed.

In my office at Jenkins

Recd Ch \$50 from Arnold J. Derksen
Request in full

Sept 17-1931 Thursday

Recd Ch \$150 from Drennen
wrals I/O

Sept 18-1931 Friday

Dine w/ Derksen fam. + book Alma
and I pick up Reed at Pequot
School 3-15 PM. Lv Alma atBainard Reed + I go St Paul
Quevili with I/O @ 686 St Paul st
apt # 19. Phone Garfield 3223
Ar 9-PM...

John W. Curo

Time Sheet Working for Fred Seekel. My Duff Kimball.		Fred Seekel. My Duff Kimball.		Fred Seekel. My Duff Kimball.		Fred Seekel. My Duff Kimball.		Fred Seekel. My Duff Kimball.	
on contract 8/50. I pay Board & High		I pay Board & High		I pay Board & High		I pay Board & High		I pay Board & High	
Sept 1931	15 16 17 18 19 20	SUM	20 21 22 23 24 25	SUM	26 27	SUM	28 29 30		
John W Caro	1	0	1	1	1	1			
Expens		0							
Car	1	0	1	1	1				
J. Reed Curo		0	1	1	1				
Fred Seekel	² 1	0							
Arnold Seekel	² 1	0		² 1	² 1				

Sept 19 1931 Sat

all day in St Paul. Reed sees Dr

Call on Mike Thornton Queenville with
Ito

Sept 20 1931 Sunday

Reed + I call on Dr

PM. drive home to Jenkins

Sept 21 1931 Monday

Dr Fisher calls from Reamond

I go with his father + driver to Leech
Lake and Walker

Sept 22 1931 Tues

Reed + I make survey for Marilyn Satis

and in P.M. Drive to Silver Peak

Mr Keown goes with us.

SW Cor Sec 7-137-27 Reed + I cut

line Check Chain over small
lake. Hat $4711.2 + 138.8 = 4850$

stake Thence over lake 300 ft

0.25 West of Hat 5150 Nat. Hat

Chain = 0.25 long in 438.8

Then drive around to Seehol Res

They will help us tomorrow

John W Cress

⑥

Sept 23-1931 Wed. P.M.

Reed & I go to Sechel Res. Arnold & his motor
boat takes over lake when I re-set Sta
1697.2 set RR. spike old BT = Ark 7 S 7° 02' W
15.00 New BT Elm 85 33° 15' E 26.65. dirn spat
Turned from Random E-W

Old BT = Dead Ark 55 82° 05' W 20.90 gone

Arnold takes us back in boat we
drive around lake Check Chain

Sta 3125 + 75 = 3200 stakes + 290.7 =

3490.70 - To old 20 d spike in stump

Chain checks O.K. Hot ch = Cold ch

Sept 24-1931 Thurs

Reed & I Cut on Port Sater J. Ryan's
Cove at Sechel res 10-30 A.M.

Mrs Sechel wants us back @ 1 P.M. for
dinner - we drive 7.6 miles to Hope

Cottage 18 minutes Cut line West
meet Leo Walton & Manley Satchell

7.6 miles back dinner with Sechel

2 P.M.

Reed drives around 7.6 miles to
N.J. Hope Cottage Arnold & I
bring small boat over via portage

57

⑦

Sept 24 1931 continued

Reed and I Beg @ Spike in Stump @
Sta 3490.7 ch West 9.30 plake 3500

-3600-3700-3800 Stakes on line

3822.40 Hub = R.R. Spike 3873.05 Hub

R.R. Spike 6. ft from water

Too far over lake for chain. Arnold
and I set stake in center of lake and
stake on west side Find plug in Stp
4711.2 w Entire line checks perfect
for course to apt 0.15 of 0 foot so
of Sta 1697.2 OK. Reed at T over
Hub 3490.7 Flag at 4711.2 and 1697.2
Find stump but no plug at 4645.10

Arnold and I in boat chain from
3873.05 West 218. Ft to stake in lake
and 216. ft to stake on west shore

218

216

434

434. ft rough chain

stake in E of lake bends in
water Arnold goes back with boat
Reed and I triangulate lake

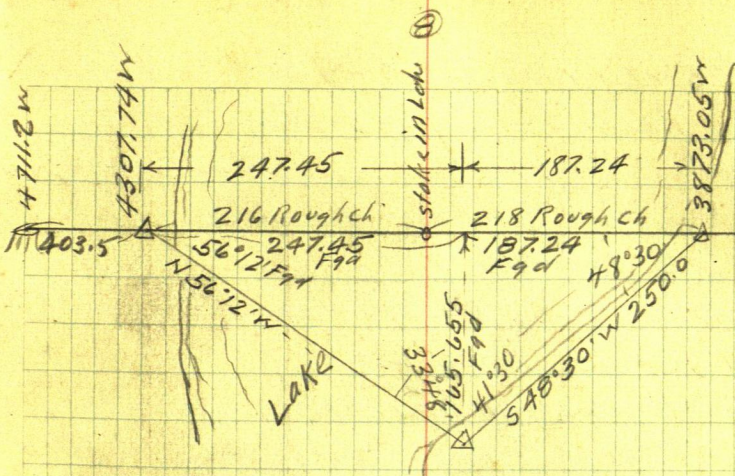
T over Hub 3873.05 w Run

S48°30'W 250.00 Hub 10 ft E of water

Flag over lake bears N56°12'W

Figured = 187.24 + 247.45 = 434.69 +

3873.05 = 4307.74 w Flag over lake



S 48°30' W 250 Feet

$$\sin 48^{\circ}30' \times 250 = 187.24 \text{ W}$$

$$\cos 48^{\circ}30' \times 250 = 165.655 \text{ S}$$

56°12'

$$\tan 56^{\circ}12' \times 247.452 = 165.654$$

$$\cot 56^{\circ}12' \times 165.655 = 247.452 \text{ OK. check.}$$

Reed and I drive around and to Car at Silver Peak Pack Inn and loads 80 rods SE Check Chain from stump @

St. 4711.2 Ch E 300 + 103.5 = 403.50

added to 4307.74 = 4711.24 OK.

Close Check π over 4711.2 BS E. Flg @

5150 seems to be OK. Too dark to see well

7-12-13-18 - 137-27-28

Pull up old post and drive 2x 48" IM in big mound NW & SW old BTS ok, perfect @ 10° NE & SE lines here but down - McKown is present.

John W. Cress

Sept 25-1931 Friday

all day Rain Tom Todd still about house -- 9 AM Brainerd Police patrol go thro Jenkins Reed and I follow to Bocher

Sept 26-1931 Sat

all day in my office Evening Alma Reed & I take Tom Todd home to PK Rapids

Sept 27-1931 Sunday

all AM in office PM. Mattie-Mary-Dwight and Mac. come from Brainerd

3-15 PM. Reed and I drive to Silver Peak Park & so to Sec Co

Corner Hut 5150. W corner to

7-12-13-18-137-27-28

Lies SW 26°10' L 46.3 (46.28)

(See Page 81-Book 33 Says "563°50' W #6")

563°50' W 46.28 = 26°10' L

Sine $89752 \times 46.28 = 41.54$ W

Cosine $44098 \times 46.28 = 20.41$ S OK

$5150 + 41.54 = 5191.54$ W. Cor sets

S 20.41 Correction = .003931

West

2041

~~41.54~~
46.28

5150.00

Standard

5191.54 NY Ch

18 17

(10)

5131.50 US

Ideal Temp
137-28

Water Town Temp
137-27

1

6

(5)

527779 01 ICE

528755 01 ICE MYCH

NO. 48' E OK

NO. 41' E OK

20.30 short
2550.80
2629.7 Mych

1240.80
US 4.85
123595
MYCH
123479
OK NW

5200.80 US

515 1314.85 1314.85

5180.50 My chain
cold

5175.57 My Herich
OK

Pg 107.

12

90° 48' E
90° 48' E

89° 12' E
89° 12' E

Reads 90° 41' E
90° 41' E
FTT
132000
14168

1310.10 1320 US

5270.10 US
5191.54 Mych on ice
78.56 short

.014906 Short

1320 x .014906 = 19.68 = 1300.32

1300.32 - 2600.64 - 3900.96 + 1290.57

1310.10 x .014906 = 19.53 = 1290.57

80

⑪

Sept 27-1931 Continued

From Hat 5150 W Chain E 70. To
5080.00 W Set Hat R.R. SpikeTo over 5080, Turn 90'S 19.97 To
Hat R.R. Spike on Traw LineSet Hat @ 4850. and one further East
R.R. Spikes - Home to Jenkins

Sept 28-1931 Monday

Home all AM. PM. Alma Reed + I
to Beamed - Alma sees her doctor and
we drive to Aithin where I see MrHudson and return to Jenkins
via Cross Lake. L. alma at JenkinsReed and I L. at dark and drive to St
Paul stay with I to at 686 St Peter St
apt #19.

Sept 29-1931 Tues

Reed and I in St Paul take I to
St Joseph's Hospital Reed sees Dr
Wartman - I copy notes at Capitol
Mr Ken. sick Call on Mike Thornton
Call again on I to at hospital See Patton
at meals and drive home to Jenkins 8:30 PM

John W. Curo

⑫

Sept 30 - 1931 Wed.

Working today for J. A. McEwen
 All AM. in office on old survey notes
 PM. Alma - Reed and I to Pequot. Send
 \$45. First coupon payment on my new
 Chevrolet to

Drive to Silver Peak at 2-30 PM.

Alma stays at resort. Mac goes with Reed
 and I to Cor 7-12-13-18-137-27-28

Heller over true Cor = 2x48" pipe in
 large mound @ old NW and SW tall dead 6ft
 stumps standing still plainly marked

Perfect for course and distance
 with themselves @ 10' var checked with
 'old NE & SE lines still here but down

Focus East on true line take

New B.T.S. Viz:

JP10 N 49° 00' E 18.55: JP12 N 59° 35' W 31.95

JP11 S 40° 35' W 44.55: JP14 S 57° 30' E 36.18

To flat spot at base Focus short sight

E on true line turn 89° 14' 30" L and run

North on true line var reads 6° 30' E

Quit @ 5:30 home 6-10 PM. Call Dr Gerber about
 Reed and I drive to Beairned See Gerber about
 his Leech Lake survey - Alma does not call on
 Dr Grace Williams

63.

⑬ J. A. McEwen

Oct 1-1931 Thurs

9 AM Reed and I Lv Jenkins - 9-30 at
Silver Peak. McEwen has his East line
nearly thro to his house. All walk to

Correcting

 South line Sec 7-137-27 = .0039315

5191.54 W goes S 20.41 - IM

5080. W " S 19.97^{RR split} 4850 W goes S 19.07^{RR split}4809.7 " " S 18.91^{RR split} 4711.2 " " S 18.52 Hut

12.00 Noon all eat dinner with McEwen

PM. Reed and I drive to Haps calloge

Shoot two large turtles. X over 600 spikes

3125.00 W. See Old Nalis Page 51-52

Ties to Random Hut 3125 V12

Pap 8N 67°00'W 9.13 Turned from Random

Pap 4'25 12°15'W 3.93 ^{see p 53}correction = .0039315

3125. guess S 12.28 wood hut on line ch

East 15.00 ft to 3110. W set Hut RR split

West 75 = 3200 + 100 = 3300 Hut

X over 3110. W run 90° S. 12.23

Set MC = 2 1/4 x 48" Pipe wit MC

20 Ft W of General Tap of Birch

and about 40 ft W of Waller

A 3300 W Charn 4.0 E T. 3296 W

Ch S. 12.96 set Birch Hut

Oct 1-1931 continued

Reed and I drive 7.6 miles to Fred Seckel
Resort Arrive 5:25 PM. Bright sunshine - South
wind - warm. Write notes and wait for
Seckel and Sons. Figuring. Hub 1697.2 W. goes
S. $.003931 \times 1697.2 = 6.67 + 0.15 = 6.82$ See old
notes Pg 52. for the "0.15"

Decid. to go home. Leave our two Turtles
with Otto Seckel who says he will dress them

Oct 2-1931. Friday

Write Mike Ryan and at 8:45 Lu Senkris
Arnold Seckel and his motor boat from the
1697.2 ch to 6.82 set 2x48" pipe on true
line bet 7-18-137-27 on N edge of Island
Ties Vi = ^{Ash 75 13°34' W 8.30} TWINE in 24 at bases 42°30' E 21.25
Turned from true line EW. Var Rend. 6°50' E
Chain E 95.60 set 2x30" white stake
2 ft W of water = Sta. 1601.60 W
Run West 41.3 to small stake 2 ft E of
water. Run North 33 ft to water
Turn 90° N. Reed and Arnold in motor boat
go and set flag and R.L. spike North in
Seckel's yard. Dinner with Seckel

Oct 2-1931 P.M. continued

Arnold Seekt and his motor boat takes
Reed and East to E Line Sec 7-187-27

Copy Old Notes Page 5 to 9 Book 33.

of Feb 9-10-1925 viz

"South Bet 7-8-137-25 Following Knutson's

old line 300 - 600 - 600.7 P.R. Rail by
Knutson S. W 0.30 @ 793.80 Nail in E Edge 4"
green Oak stump 900 - 1025 Set small Hub

0.20 E of Knutson's old Hub 1319.10 S set

small pin 0.30 of a foot E of Knutson's 1 inch

iron pin BTSto iron pin 4" Oak stump 3 ft Hi
S about 20° W 6.50. 12" NP N about 85° E 13.40
1480 S end in Sand Shore Kzech Lake.

1500 stake 1510 L NW - SE Nali Lake extends

60 ft W in Hi water NWSE 1800 stake - 5114

= 1748.6 Hub (1878.3) a 1 inch iron pin

set by Knutson S. W. 0.30 to 1 inch

Ties to iron pin NP 11 S ^{Oak st 35 about 10 W 5.10} " 85° E 17160

40 ft N of Hi water 1920 S Hi water mark

Hot Lake 2100 - 2400 - 2700 - 3000 - on ice

3018.90 Hub on ice 3300 - 3600 - 3900 stake ice

4140 ent Island N² 3. NE Cor 4200 stake

4251. Hub on Island 10 ft W. of E Edge Hi

Bank 10 ft Hi 4200 + 100 = 4300 S 1/4 5 ft

W of E Edge island Thence along E edge

sharp bank 10 ft. Old Notes

Oct 2-1931 continued

Old Nalis of Feb 10-1925 continued. $4300 + 300 = 4600$ Station sand beach - $40 = 4560$

The extreme SE Pt of K. bank of Island

4650 enter ice Rush Lake. $4900 - 5200$ on ice
 $5500 + 120' = 5620$, 10 Hubon Island

Pg 38 Bk 33. Feb 14-1925 says 5287.555

Cor 7-8-17-18-137-27 sub West 19.50 Old Nalis "

Correcting E. Line 7-137-27

Figured Today Oct 2-1931 viz .0036876

$5287.55 \text{ into } 19.50 = \overset{00}{.00} \overset{368761}{36876} \text{ OK.}$ Pg 38 Bk 33

Over Hat 1748.60 ch w 6.45 OK.

1878.3 gae w 6.93 42515 gae w 15.68 OK.

Arnold and maki boat lakes Reed

+ 2 to Island Reed finds very

small old Hat @ 4251.5 ch w 15.68

Angle turned with Field Book. Set

2x12 ironwood Hat 4251 and

also at correction Hat Place back

shot on true line Thengo back

to over lake Over correction

Hat 1748.65 Focus So on True Line

at Hat 4251. True $25^{\circ}03'$ R. to

Hat Half a mile SW 1601.60 on true

Line Boat over lake Over 1601.6

Hat 1748.65 Bears $N 25^{\circ}44' E$

John W. News

67

17

Oct 2-1931 Continued

Finish at dark - boat runs out of gas almost at Seckel dock. Reed rows in supper with Seckel. Otto Seckel dressed our two turtles - we take the meat and to for home - Call on Mr Ewen - drive to Hope cottage & home to Senkins

Oct 3-1931 Saturday

9 AM Reed and I drive to J. N Hope cottage look up road side and drive to Harry Gould res. Back to Pequet. Grind axes dinner at home - PM. Figure corrections No. 2-45 PM. drive to see 7-137-27

Bx @ 211 NE cor ch

South on my new transect line

300 - 370.20 @ Road Hub 111.5 ft 600

659.8 = 40 d spike: 754.3 Spike 20 d in west edge 10" green oak stump

759.8 Hub 900 - 1021.2 Hub 1200 9th

stakes set every 300 ft. Starts to rain - Drive to Seckel Resort then home - Meet Ideal Town Board

in rain trying to sunny road

Downey eats turtle supper with us

Continued 11/70.

J.A. McEwen

18

Oct 3-1931 cont'd

Nati: Something wrong here

My old value claim 3538.95 From $17 \frac{5}{8}$

Hub 1748.6 S = 5287.55 E Side Sec 7

3538.95 old ch = 3407.72 Fgd Today

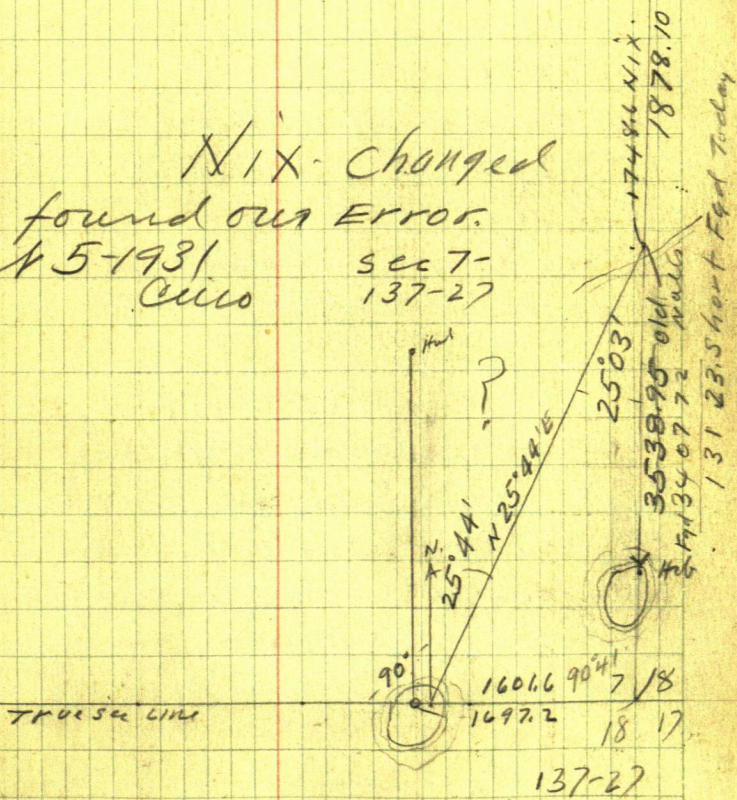
? Seems to be 131.23 short ?

Nix - changed

We found our Error.

Oct 5-1931
Cairo

sec 7-
137-27



Oct 4-1931 Sunday.

Figuring

Something wrong with lines from
SE Cor 7-137-27 - or north?

$$0^{\circ}41' \text{ Tang} = .01193 \times 1601.6 = 19.11$$

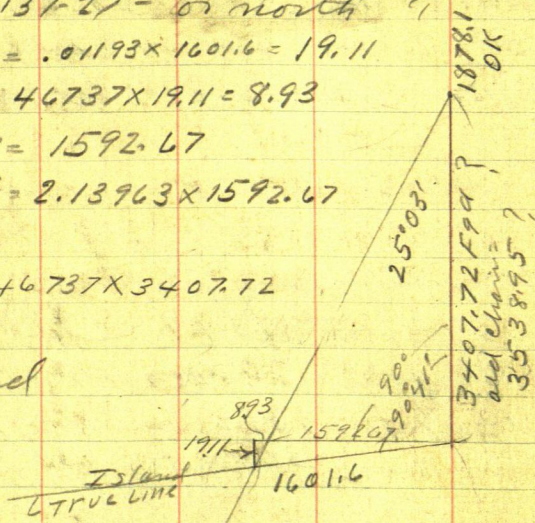
$$25^{\circ}03' \text{ Tang} = 46737 \times 19.11 = 8.93$$

$$1601.6 - 8.93 = 1592.67$$

$$25^{\circ}03' \text{ Cot} = 2.13963 \times 1592.67 \\ = 3407.72$$

$$25^{\circ}03' \text{ Tang} = 46737 \times 3407.72 \\ = 1592.67$$

Changed
See Pg



9:45 AM. Reed and I L. Jenkins

Find Bertha Ellis & son "Toddy" also
Otto Hauser of 3125 Emerson Ave N. Mpls
and son also his clerk. Fred Seckel

Otto Hauser - Mrs Bertha Hauser Ellis
and I cross in boat meet Mrs & Mrs

"Joe N Hope and Mrs King?"

I offer to accept new wood at back of Hope
Garage - He refuses and offers wood via
swamp which Mrs Ellis refuses.

(29)

Oct 4-1931 continued

Reed and I eat dinner with Mrs. Ellis & her brother Otto - P.M. Fritz takes the men fishing. Reed and I visit with Mrs. Ellis till 3.15 P.M. then drive east and continue

Southern sandon on line line bet 7-8-

137-27 continued from page 67.

1318 about. 1x1 inch Iron sets 405 ft 4

1320 S. slake 1350 slake 1400 enter water

1500 slake in water 1503 L. water

1709.3 Hub N.N. spike 1748.6. New Hub

OK. Check Perfect with old Rando Hub 1748.6 which sets E 6.45

1800 slake + 78.1 = 1878.10 New Hub 6.90

W of pt for old line 1. inch E of Iron
 pin see all notes page 65.

Correction = 368791

1878.10 x 368791 = 6.93 OK. close

OK we found point Nali We had
 our Heller T on Hub 1878.10

NOT 1748.6 This clears up things

21
 Oct 5-1931 Monday

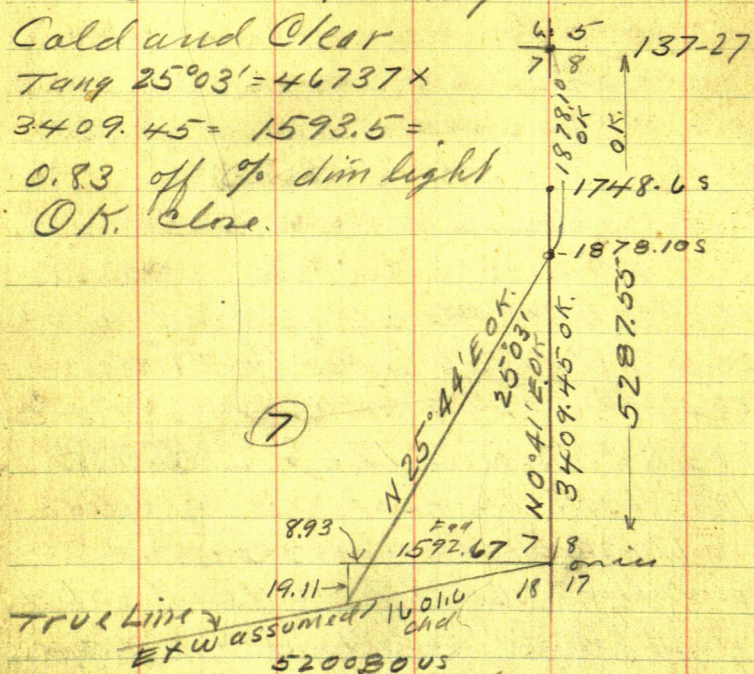
Cald and Clear

Tang $25^{\circ}03' = 46737x$

$3409.45 = 1593.5 =$

0.83 off % dim light

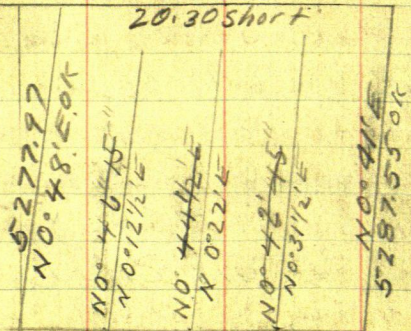
OK. close.



(7)

520080US
 5180.50 NY ch
 20.30 short

5191.54
 5180.50
 11.04
 11.04 off in
 5277.97 =
 .0020917
 = 0° 07'



5270.10 US
 5191.54 NY ch
 78.56 short

Oct 5-1931 continued

9 AM. Reed and I w Jenkins, call on
Pequet Bank and drive to Silver
Peak. McEwen goes with us to Cor
7-12-13-18-137-27-28

Notes: As this Cor Falls in a hole
I set T on R.R. spike hub on true line
pt E of Cor Focus E on true line and
run N44°44½' W to Hub 110.9 N of Cor
T over Hub 110.9 BS S44°44½' E Run
N0°48' E Transit Telescope. S. Line cuts
2 2m - O.K. Run N0°48' E on true range
line 110.9 Hub RR spike. 214.5 Hub 300 sth
360 cut swp E-NW 325 LVE-NW EXT
25 ft W. + 76.7 Hub on pt 15 ft E of small
pat hole about 510 a 4 rod pat hub west
15 ft 600 staks 605.2 Hub 680.60
4 ft staks on line 900. staks 959.5 wire
Fence E-W 988.35 Hub = 2x18" NP.
1047. E. Edge ^{997 pin under T} 12" Oak Line cuts
Bark on E side of tree ½ ft above ground
12.00 N of road 1035.0 = Hub & road
NE-SW 1200 pin in yard. + 119.49
= 1319.49 Hub S ¼ Cor Set 2½ x 48
inch pipe one inch up + 187.01 =
1506.50 Oak Hub 2x 42. inch

73

23

$1506.5 + 5.3 = 1511.80$ Hut no side
 Callage. Town Hut 1506.5
 SE Cor Callage bears $58^{\circ}10'R$. 16.9
 SW Cor $65^{\circ}50'L$ 9.65

Offset to get post Ho 17th

At Hut 997 N Set Book shot $90^{\circ}R$.
 E. ^{17.00} at Hut 1506.5 set Hut $90^{\circ}R$. E
 17.00 ft Town offset 1506.5 ch 18.
 43.5 to 1550 N. Town 1550

Run $90^{\circ}L$. West 17.00 to Hub on
 true line 19.95 N of Ho

Town 1550 N on true line ch
 35. N T. 1585 Set $2\frac{1}{2} \times 48$ " Pipe
 W. T. M.C. So side Whilfish
 Lake 10 Ft S. of cut Bank Birch

Town 1550 N - NW Cor Ho S $27^{\circ}55'W$ 24.5

NE Cor $S34^{\circ}55'E$ 21.85 Nat. all

chd to sharp outside corners of
 8x8 cement blocks under 4

corners of house Turned from
 true line called North as to ties

Town I M M.C. 1585 N

Ties 6" Barwood N $72^{\circ}42'E$

20.85 to 20^d spikes sticks out
 $\frac{1}{2}$ inch

McEWEN'S

Seeke-ellis
McEWEN-Kimball (74)

Oct 5-1931 cont'd (2)

Tues to MC 1585 cont'd

8" Birch S 20° 05' W 250.90 - Spike 20 d

8" Bass S 74° 54' E 76.60 - Spike 20 d

at base all spikes stick out 1/2 inch

Turned from line line assumed

N-S. V 6° 15'

True line appears to hit top of
Big W.P. line over lake hits 4 or
maybe west side House on line
is 18 x 24 - including Porch on
N side

Ties to S 1/4 = 6" W.P. ^{N 50° W} 2.70 FT

Not to discover that our True Range line
just finished cuts almost 1/2 of an old
rail fence and posts from McEwen's road
about a block south where Skidley once
built a fence along the old spatted line

This clinches McEwen's opinion that
our line is correct and he says so

McEwen gives me ch \$25 in full

Ch Oct 5-1931 - Marquett Natl Bk Mpls

To John W Curo \$25. Signed

J.A. McEwen.

Oct 5 P.M.

Home to Jenkins

John W Curo

75

Oct 6-1931 Tues

All AM. in office on Herb Keller mail
Reid takes Mattie to Pequot & back.
Dinner at home. PM.

Reid and I Lv \$25 of at Pequot Bank
Alma - Mattie - Reid and I go to Herb
Keller r.m. Start line 50

Oct 7-1931 Wed

Work on survey of Jenkins creamery
PM. Reid + I call on Troy Easam
& back. inspect mill on 23-137-25

Oct 8-1931 Thurs

With Geo + Preston Newman
bet 27-28-137-29

PM. Rec ch \$150. from Dennis
To Pequot deposit 35-50 - pay 35 mls
like \$50 - 4 PM. Reid + I go to Paul
Car gear and Paul values adjudic
rc \$1.65. Over mile with I to
868 Mt Pelic St. Wilt-De Camp.
Alma and Mattie alone at Jenkins

26

Oct 9-1931 Friday

Reed & I all day in St Paul call on
 Wm Lanerth. Sargent of Police St Paul
 also Asst Chief of Police Cullen

Pay Dr 8/10.

Buy stink's MWTC. 2 @ 68¢.

Buy Reed boots \$6.45 & shoes \$4.77

Anderson shoe store call on Kennedy
 store \$1. Come-a-longs Call at State

HW. Dep. get address B.C. Craig

Baudette Bookers Eng'g for HW. Dep.

Home lit

Oct 10-1931

Reed and I to Bookers Mr & Mrs

De Camp will pay me \$200.

for survey of their land. Meet Mrs.

De Camp - Kennedy & husband.

P.M.

Reed & I take Alma & Mattie to Brad
 o-back - alf & Martin's cigar-bowl.

Dwight & Mary call. I call on Sullin
 for winter

John W. Seckel

77

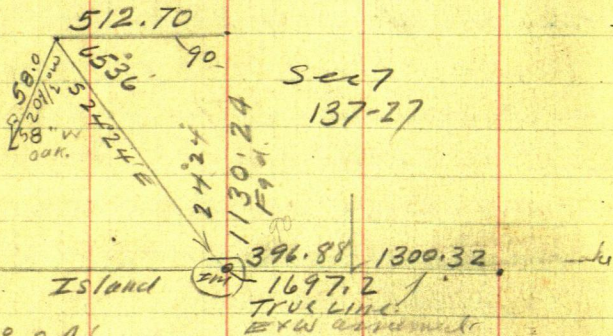
Oct 11-1931 Sunday

all AM. in office PM. Alma Mattie
Reed + I take lunch to Seckel farm

Eat in Seckel Cottage at 2 PM.

Take distance over lake

$$\begin{array}{r} 13 \ 2 \ 89 \\ 13 \ 19 \ 49 \\ \hline 2 \ 70 \\ \hline 13 \ 20 \ 19 \end{array}$$



Sec 7
137-27

24° 24'

Colt 2,20449 X 512.7 = 1130.24

Tang: 45362 X 1130.24 = 512.699 OK

Heller over triangulation Hub 512.7

8" W. Oak lies bears S 20° 28' W 58.0

Note: This Oak was Seckel's anchor
tree for his Ferry cable 25 ft from

E. Edge Pine River. Reed goes in

boat to 20' W P Stump and anchor

tree on W. side Pine River bears

S 12° 47' W 575 Ft Stadia taken

on boat over roughly. Set Hub

N over another lake. Home at dark.

Jahn W. Cress

Sec P9107

528

Fred Seckel
See page #103

78

Oct 12-1931 Monday

Sec 7-137-27 Old Michener Cr. 2627.7 New cl. 1932

New 1234.78 1.19	1235.95 4.85 1240.8005 905.4	1314.85 5.15 1320.0005	1314.85 1314.85 158.15	1314.85 1314.85 89.13	1321.89
5277.97 N 0° 49' E	1319.49 1319.49 2638.98 90°	5280.365 N 0° 12' 30" E	N. Line From Survey Bk 158.15	and should be 82	1321.89
1290.57	1320.109 12 1/2' E	1300.32 5282.76 N 0° 22' E	1320.69 2641.38	1300.32 5285.155 N 0° 31' 1/2" E	2643.78 1321.89 N 0° 41' 4 5287.55

1953
1310.1005
East - assumed for survey only
-3900.96
1968
1320.0005
2600.64 mych

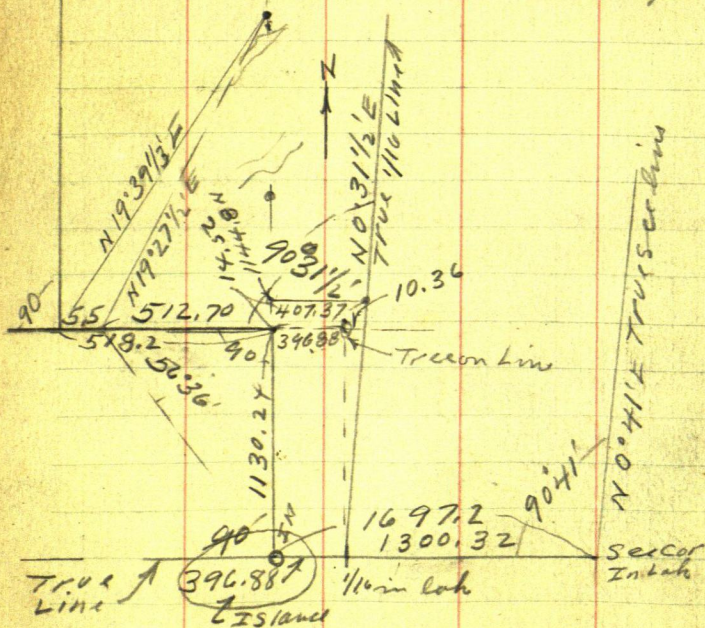
Figuring E 1/4 link
 $5285.15 - 14.53 = .0027492 = 0^{\circ}09'30''$
 $0^{\circ}09'00'' = .00262$
 $0^{\circ}09'20'' = .00272$
 $0^{\circ}09'30'' = .002765$
 $0^{\circ}09'40'' = .00282$
 $0^{\circ}10'00'' = .00291$
 $5282.76 - 29.06 = .0055 = 0^{\circ}19'$
 $5280.36 - 43.59 = .008256 = 0^{\circ}28' 1/2'$
 $5280 - 54.62 = .010345 = 0^{\circ}35' 1/2'$

Oct 12-1931 continued

Figuring E $1/16$ Base Line goes E
 Hub 1697.2 W and 1130.24 N
 goes E 396.88 T. 1300.32 W T. Pt
 1130.24 N of E $1/16$ Cor which is
 in lake Thence .009165 E

$1130.24 \times 0.009165 = 10.36 \text{ E} =$
 $0^\circ 31' 1/2'' \text{ E}$ To Ptm True E $1/16$ Line
 1130.24 N of S. $1/16$ Plat 7 & 18
 which is in Lake

Thence $NO^\circ 31' 1/2'' \text{ E}$ along True
 E $1/16$ line See Plat Pg 78



Oct 12 - 1931 Continued

Dinner at home 1-30 PM. Alma - Mattie
Reed and I in Chevrolet - Callon

Knobel at Seckel resort 2-30 PM.

Hellerover 1130.24 E @ 90° hits line

ch N 14.56 To 1144.80 N Turn 90° E

1144.8 x .009165 = 10.49 + 396.88 = 407.37

To P on N-S-E $\frac{1}{16}$ line 1144.8 N of $\frac{1}{16}$ Cor

Then N 0° 31' 1/2" E Hellerover Hat 407.37 E

Rum S 0° 31' 1/2" W 77. ^{= 1067.80 N} feet set Hat = R.R. Spion

Turn E $\frac{1}{16}$ ^{LINE} ~~cor~~ fork of bank Rush Lake Rum

N 0° 31' 1/2" E @ 95° ^{= 1240 N} incl. water @ L & E W

at set Hat = R.R. Spion so bank Hat L

"Hen Lake" or "Bass Lake" now part of Rush

Reed drives N and sets Hat half a mile

N 0° 31' 1/2" E over lake near Duff Kimball res

I pay @ to + Pearl Seckel 50° @ to dressed

my two turtles a week ago. Over lake

Reed and I cut line N 0° 31' 1/2" E till dark

Home late.

Oct 13 - 1931 Tues

Oct 14 - 1931 Wed.

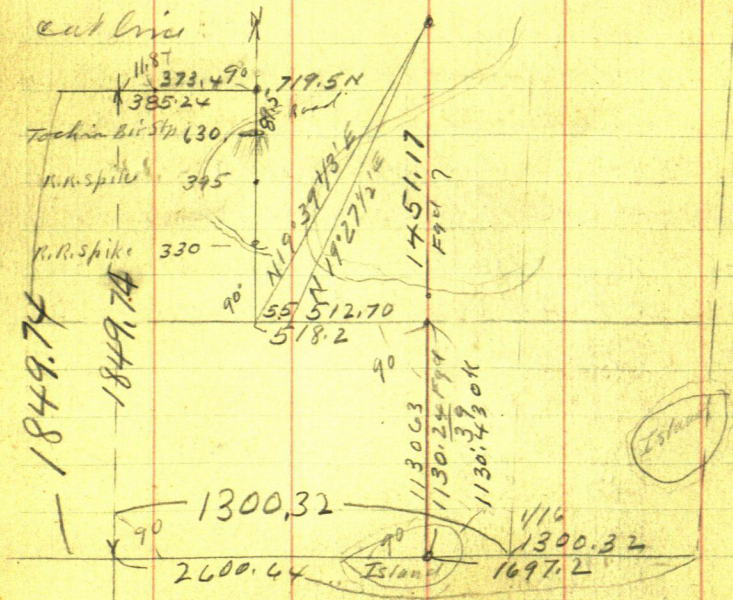
Rain - 9 AM. Mattie - Alma - Reed and
I take Johnson to Beavert. I
see Mike Ryan of Mrs Ellis Road.

Conklin puts in our new Chevrolet
Healer - no charge - Alma - Reed & I home
to Jenkins 2 PM.

Still fog. Reed and I work on Creamery
survey.

Oct 15 - 1931 Thursday

10 AM at Lake Resort. Altr & Donald
cut lines.



Oct 15-1931 cont'd

Figuring

$$\begin{array}{l} \text{Tang } 35330 \times 1451.17 = 512.698 \\ \text{Cot} = 2.83045 \times 512.7 = 1451.17 \quad \text{OK.} \end{array}$$

Try 19'27"

$$\text{Cot } 2.83176 \times 512.70 = 1451.84 \quad \text{check}$$

$$\text{Tang } 1451.84 \times 35314 = 512.703$$

Try 19'28"

$$\text{Cot} = 2.82914 \times 512.70 = 1450.49 \quad \text{check}$$

$$\text{Tang } 35346 \times 1450.49 = 512.694$$

$$\begin{array}{r} 145184 \\ 1450.49 \\ \hline 212902.33 \\ 1451.17 \end{array}$$

At Hub 1697.2W and 1130.24N Run West
518.2 to 2215.4W Thence North 719.50
to 1849.74N Hub Thence West 385.24
to pt 1849.74N of $\frac{1}{4}$ Cor on so side
of sec 7-137-27 Nalis as 4 runs N0'22'E
we ch E 1184 ft red Hub on line N-S-E
Tang $0'22" = 64" \times 1850 = 11.84$

Cut line N0'22'E and S0'22'W
along true N-S-E sec 7-137-27
A road to Abstr worked 10 AM to 5:30 PM
= $6\frac{1}{2}$ Hours each Reed and I like dinner
with Mrs. Seckel

John N. C. C.

Oct 16-1931 Friday

8 AM. Wk

and Wk Jackson of Litchfield call.

9 AM. Hal Willis hands me a warrant
to serve on Harry Rhodes after 4 PM
today. Reed and I @ Hops Cottage"0" 10.0 AM. Run over IM. 3110.0 W of SECOR
Sec 7-137-27 on sec line on W bankRush Lake Ties VIZ OAK 15 N 10°30' E 40.58
PAP 8 N 55°40' W 28.23, NP 45 53°50' W 27.23
Turned from Ties line E

Run West on tie line 82.40 set Hat

P. R. Spike in $\&$ old road 3192.40 W

on tie so line sec 7-137-27

St 0" From IM. 3110.0 W run 90° N

160.85 set Hat = P. R. Spike in $\&$ old roadHeller π still over IM 3110.0 W on

sec line B. S. E on IM on Island

"1" Run N 19°20' E 233.40 set Birch

Hat 1 X 20 + 6.10 = 239.50 Hat =

P. R. Spike $\&$ old road

3110.00

77.27

3032.73 W

1920'

Sine $33106 \times 233.4 = 77.27 E$ Cos $94361 \times 233.4 = 220.24 N$

"1" Hat 233.4 is 3032.73 W and 220.24 N

from SECOR Sec 7. -137-27 all angles

figured @ 90° to look dry.

Oct 16-1931 cont'd (Sto 1)

Truss Hut 233.4 Run 3032.73
 N 46° 00' E @ 300 R.R. Sp. in N wheel - Track 2600.64
432.09
 SIML 71934 X 600.68 = 432.09 E

Cos 69466X

300 + 164.5 = 464.50 Birch Hut "2"

1 X 24 set in graining patch = St 2.

3.27 PM Arrive at Jenkins 4-05

Arrest Harry Rhodes to Hal Willis

warrant for "kicked" Willis girl

Reed takes Mrs Kemper & E.R. Benson

I go with Rhodes & Carlson to Judge

Ferguson - trial call for change

of venue - continued without bail

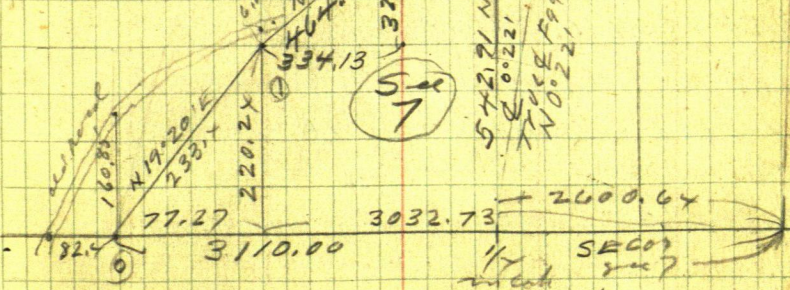
71934 X 464.5 = 334.13 E } St 1 = 2698.60 W

69466 X 464.5 = 322.67 N } and 542.91 N.

St 0° 3110.00 W - 00 N. } 0° 22' Tang = 64

St 1 = 3032.73 W } 542.91 X 64 = 3.48

220.24 N



J. W. Carr

Oct 17-1931 Saturday

Alma Reed & I Lv Jenkins 7.32 AM.

Spedonville heads 4584.0.

At St Paul - Corno Park 10.47 =

3. Hours 15 minutes about 160 miles.

11.15 am. Reed goes to office of
Dr J. L. Martineau p+s Suit 255
Shubert Bldg. Pays Dr \$2.

Gets clear health certificate

Alma and I eat lunch. about

12.00 drive to 686 St Peter St

Apt #19. Ito answers door bell

Alma - Ito Reed & I buy Alma a

hat \$2. Ito gets PO. \$5. Reed gets

lunch with Ito Lv St Paul about

4 PM. Eat at Elk River. Arr Jenkins

7.45 PM. No dance as scheduled

Clear Coal day Spedon 4924.0 = 340 mi

Oct 18-1931 Sunday

Bright sunshine coal.

Figure corrections 10-30 am.

Alma - Reed & I drive to Pequot
get school book at Calby Emmerkes.

Oct 18-1931 Cont'd

Eat lunch at home 1-PM. Lofe Cyrus and I on Hope callage 1-30- Run Hub 460.5
 Too many big lines East run back S 46° W
 4.50 To 460.0 Set R. R. Spike Hub π over 460.0
 BS S 46° W and run East parallel with S. Boloy

Figuring 46000

$$\begin{array}{r} \sin 71934 \times 460. = 330.90E \\ \cos 69466 \times 460. = 319.54N \end{array}$$

$$\begin{array}{r} 77.24 \\ 330.90 \\ \hline 409.14 \\ 220.24 \\ 319.54 \\ \hline 539.78 \end{array}$$

19°20'

$$\begin{array}{r} \sin 33106 \times 233.4 = 77.27 \text{ check.} \\ \cos 194361 \times 233.4 = 320.24 \end{array}$$

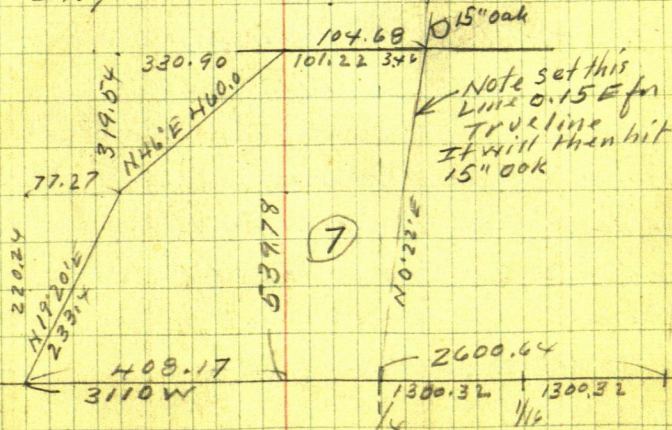
$$0^{\circ}22' \text{ Tang} = 64 \times 539.78 = 3.46$$

π over Hub 460 Run E 101.22 Hub

+ 3.46 = 104.68 on TRUCK-S-E Hub

$$\begin{array}{r} 3110.00 \\ 408.14 \\ \hline 2701.86 \\ 2600.64 \\ \hline 101.22 \\ 3.46 \\ \hline 104.68 \end{array}$$

π over 104.68 Looking N 0°22'E my line cuts
 3.0 or 4 ft West of our stake on N side of Pine
 River I try to call Seckel over with a boat



John H. Cress

87

Oct 19-1931 Monday

8-20 AM. Reed starts back to Pequot School
Pick up Lafe Cyrus and we grind trails at
Pequot. Ar Seekel res 9-45 Arnold
and boat take us over River

Heller \times over Hub 104.68 Look N $0^{\circ}22'E$
Arnold in boat sets flag on N bank Pine
River 3.95 ft west of our line stake
set Oct 15th Pg 82. From Hub 104.68 E
East 173.34 to 278.02 E

\times over Hub 278.02 Flag just set over
River bears N $12^{\circ}33\frac{1}{2}'W$

Flag near Hub 518.2 Pg 79 bears N $19^{\circ}28'E$

Flag at Hub 1130.24 Pg 79 bears N $50^{\circ}53'E$

I.M. on Island bears S $53^{\circ}25\frac{1}{2}'E$

Lafe and I eat dinner with Arnold - Fritz +
Mrs Seekel - Clear sunshin S. Wind - warm
PM.

We drive west and find that our last
line is ok. and that my line run N \times S
from Hub 1849.74 Pg 81 was pitched
about $0^{\circ}05'$ too far left as turned in
the twilight on evening of Oct 15 Pg 82
Mr + Mrs Herb Keller call

Oct 19-1931 contd

$$53^{\circ}25'12'' \text{ Tang } 1.34773 \times 539.78 = 727.48$$

$$\text{Cot } 741.985 \times 726.61 = 539.13$$

Try 1346122

$$1346122$$

$$742874 \times = 53^{\circ}24'$$

Figure till 4.06 PM Town 1849.74 N

Focus E and run $50^{\circ}22' W$

$$26 \times 1.38$$

$$1849.74$$

$$791.64$$

line cuts parallel to and 0.30 East of line from the south

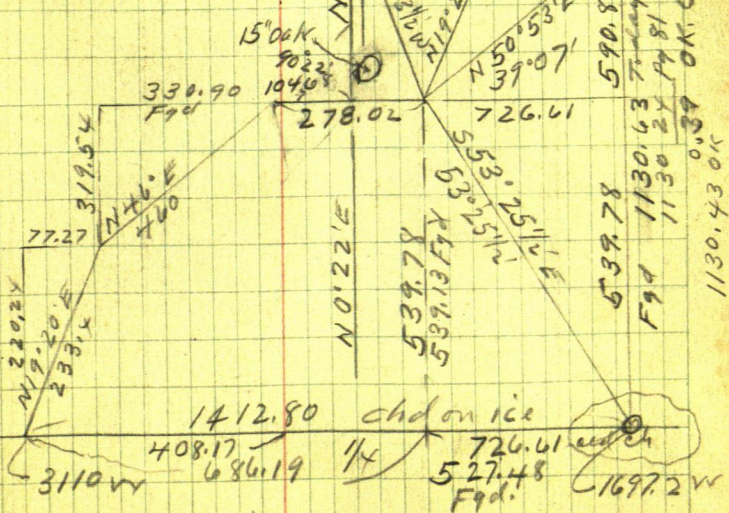
Note: Two parallel lines, 0.30 of a foot apart I will divide the diff for TRUE LINE

John Allen calls. Out at 5.55 PM

$39^{\circ}07'$

$$\text{Tang} = 81316 \times 726.61 = 590.85$$

590.85



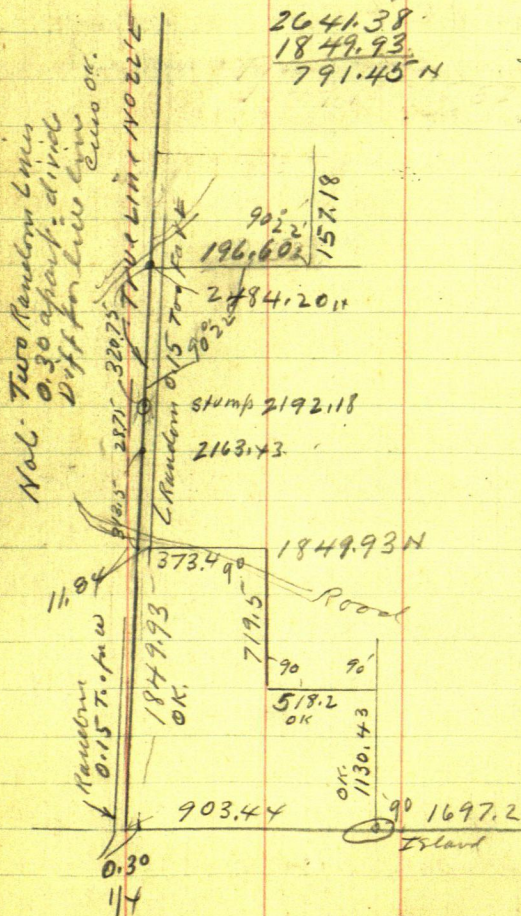
Oct 20-1931 TUES

Alma and I take Reed to school

9-AM. Pick up Lefe Figure distances

North from IM on island dirt

Figured from West = 1130.63 Fgd from N side = 1130.24. only 0.39 dif Mean = 1130.43. OK.



1849.93
1320.69
529.245

2163.43
1849.93
313.50

Oct 20-1931 Contd

10.45 Lafa and I at Seckel Resort. Arnold
gaeswirthus. Hub 1849.93 ch N 0°22'E 313.507

2163.43 Hub on Hill and From 1849.93 N ch

So 300 pin + 229.24 = 529.24 Hub R.R. spike

Nation line 300 + 254.8 = 554.8 Flag

on Random set West 0.30 @ 600 pin

25 ft N of water's edge on bank Pine

River Rake in points and set

1849.93 - 554.8 = 1295.13 N set R.R.

spike Hub 25 ft N of Pine River

1849.93 - 529.24 = 1320.69 N set R.R.

spike Hub on Trun N-S & sec 7-137-27

True 1/16 Cor in Center of South Half

of sec 7-137-27 Lafa and I eat

dinner with Seckel P.M.

From 1849.93 ch N 313.50 to 2163.43

Hub on Hill set Hub 0.15 W to True

N-S & Cover corrected Hub 2163.43

Focus S 0°22' W on corrected Hub

1295.13 Rake in Hub 1849.93 continue

N 0°22' E along line N-S & + 28.75 +

2163.43 + 28.75 = 2192.18 N. 2163.43 + 320.77

2484.20 Hub R.R. spike 6 ft 2 of 3 ft cut bank

40 ft N of water E 180.58 + 16.02 = 196.6

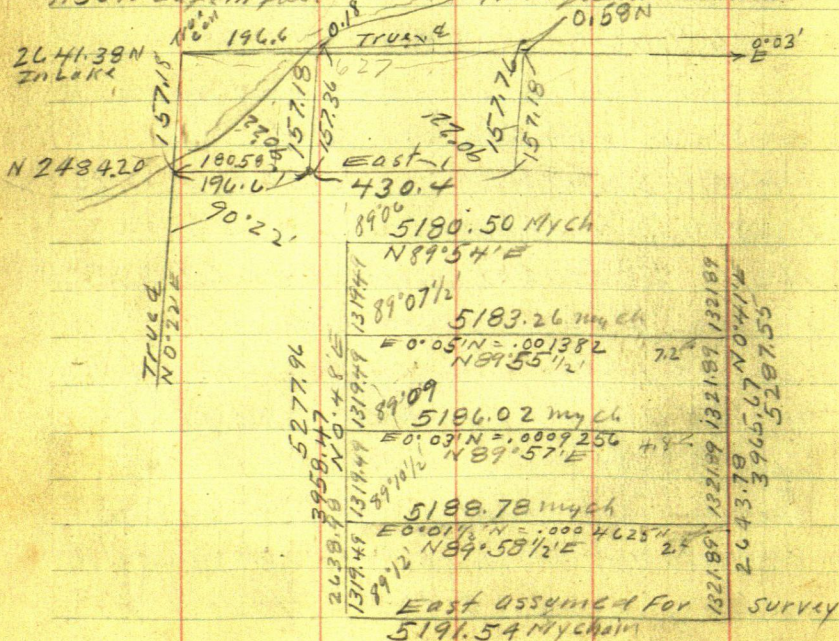
Oct 20-1931 continued

2484.20 N BS. S0°22'W and run East parallel to
 declin 180.58 Hut = P.R. Spike Town 180.58
 BS.W Run N0°22' E Hit trees continue E
 H being 180.58 East from 1/16 Cor
 16.02 to 196.6 E T over 196.6 BS.W Run N0°22'E
 157.18 To Pt 2641.38 N and 196.6 E
 from 1/16 Cor in Whitefish Lake =
 Center of sec 7-137-27

From 2484.20 N Run East 196.6 +
 T. Hut on hill

T over 196.6 E from 1/4 c ch 103.4 to 300 E

1.50 to Lake in full Reed gate remained



Oct 21-1931 Wed

Miss Ella Shoop staid last nite: Take Kued to school

Berger Olson & family L for Washington 9:30

10. am Figuring 5188.78) 2.4 = .0004625 = 0°1'35" about

S 1/16 Line correction 0004625x for each ft E about

E-W-C (5186.02) 4.8 = .0009256 = 0°03' N of E "

N 1/16 Line 5183.26) 7.2 = .001389 = 0°05' N of E "

FIGURING

East on S 1/16 - 100 ft gain N 0.06 = 1/2 inch

East on E 100 ft gain N 0.09

E on N 1/16 100 ft gain N 0.14

Figuring E-W & Sec 7-137-27

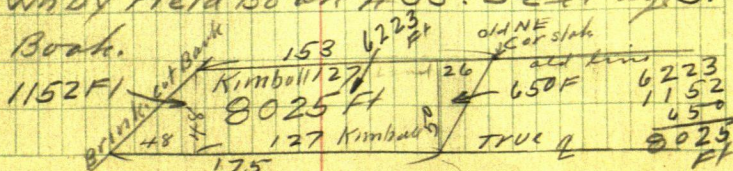
196.6 E of Center of Sec gain N x 9256 = 0.18 of a foot

627. E of " " " " N " = 0.58 " "

157.18 + 0.58 = 157.76. 157.18 + 0.18 = 157.36

Set Hubs on line line E-W

Note: As Duff Kimbals South bdry cuts 50 ft further South than Seckel first supposed Seckel cannot deliver to John Allen all of the land he and Allen first staked out - which I roughly surveyed Aug 11-1931 to Sept 15-1931 as shown by Field Book #33. See Page 51 this Book.



Blow out Home hole

Oct 22 - 1931 Thursday

Strong So wind No school Reed fixes line

Figuring in office 10-am. My notes taken on
piece of paper at desk last evening read
X over Hub on true $\angle 157.18$ So of pt for
center of sec. 7-137-27 in White fish Lk
B.S. So on \angle call this N-S-I run $564^{\circ}55'W$.
224.00 ft to old Hub at NW Cor Allen tract
being old Sta # 11. Pg 140 Book # 33

X over # 11. BS N $64^{\circ}55'E$ Run $S 15^{\circ}43'E$
135.50 to old Sta # 12.

At Sta # 11. The lake shore runs west 90°
and E. slightly N.

We figure to change old lines so as to
give Allen the 8025 ft he lost to Cliff
Kimball. Dinner at Home PM. Reed and
I on Seckel 2-pm.

Arnold Seckel helps us one hour in PM.
Too dark to work. 5 AM Out

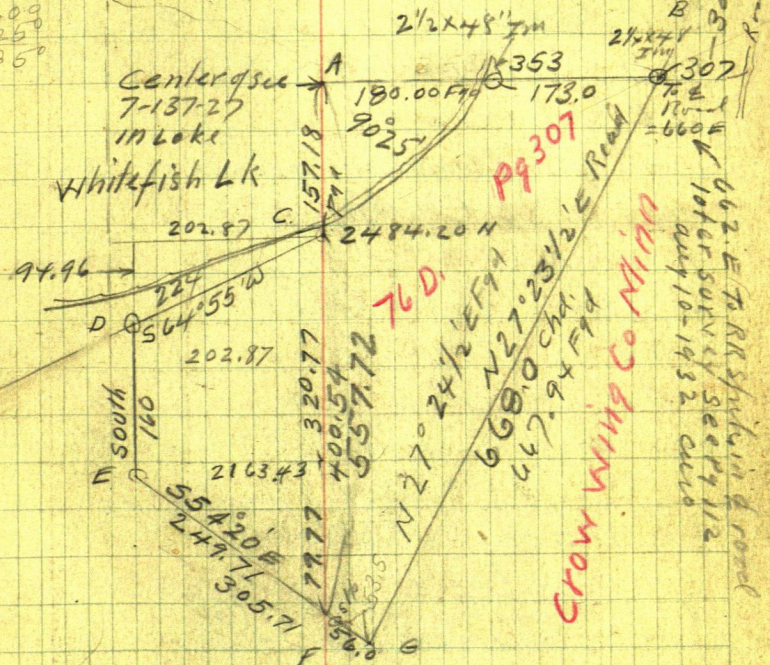
FIGURING

$$A. 0^{\circ}25' \begin{matrix} \sin 2.00727 \times 353 = 2.57 N \\ \cos 99.997 \times 353 = 353.00 E \end{matrix} = B.$$

Oct 23-1921 Friday

Anton Morrison calls and wants road line
 started Reed and I to Jenkins 10-9 AM. At
 Seckel's Arnold goes with us

5609
 260
 5360



Reed and I take dinner with Mrs Seckel
 PM.

Arnold helps 2 Hrs AM - 2 Hrs PM - 4. Her
 no pay on Allen track 3.15 PM. Quit

Fred Seckel \$25. Cash in full for Allen
 Survey \$75 bal for 116 lines also \$75 from Duff

95

Oct 24-1931 Sat

Figuring Plat

St A = Center of Sec 7-137-27

" B = NE Cor Allen Tract

" C. = I.M. 157.18 Ac of Condit

" D = NW Iron Mon Allen Tract

" E = SW Cor " "

" F = Iron Mon So Side on E

" G = SE Cor Allen Tract

A to B N 89° 35' E 353 FT

Sine $0.25' \cdot 0.00727 \times 2.5714$ Cosine $0.99997 \times 353 =$

A to C = So 157.18 = C is 157.18.5

C to D S 64° 55' W 224

Sine $90.569 \times 224 = 202.87W$ 0.10Cosine $42394 \times 224 = 94.96 S$ 0.10

D = 252.145 and 202.87W 0.10

E = 412.145 and 202.87W 0.10

E Run S 54° 20' E 249.71 to Pt F

Sine $81242 \times 249.71 = 202.87E$ Cosine $583.07 \times 249.71 = 145.60S$

F. is. 557.445 and 0.0. W

F. Run S 54° 20' E 56 FT to St G.

Sine $81242 \times 56 = 45.50E$ Cosine $583.07 \times 56 = 32.65S$

G is 590.39.5 and 45.50 E

G to B:

B is 592.96 N and 307.50 E From G.

Tan $592.96 / 307.50 (= .51855 =$ Cot $27.24 \frac{1}{2} = 192851 \times 307.5 = 593.01$ Cos $27.24 \frac{1}{2} = 88775 / 592.96 = 667.936$

Fred Seekel

Gov Lots 2-3-4 Sec 7-137-27

180
173
353
309
662

Whitefish Lake

original sea wall

Gov Lot 2
Duff Kimball

center of
sec 7-137-27
in lake

Lot
4

North
160.0

John
Allen Tract

574.00 S
557.74 E
400.54
chd. 557.72

Allen Tract

Run 1 N 27° 28' 1/2" E
66.8 chains

Gov Lot 3
Fred Seekel

Fred
Seekel

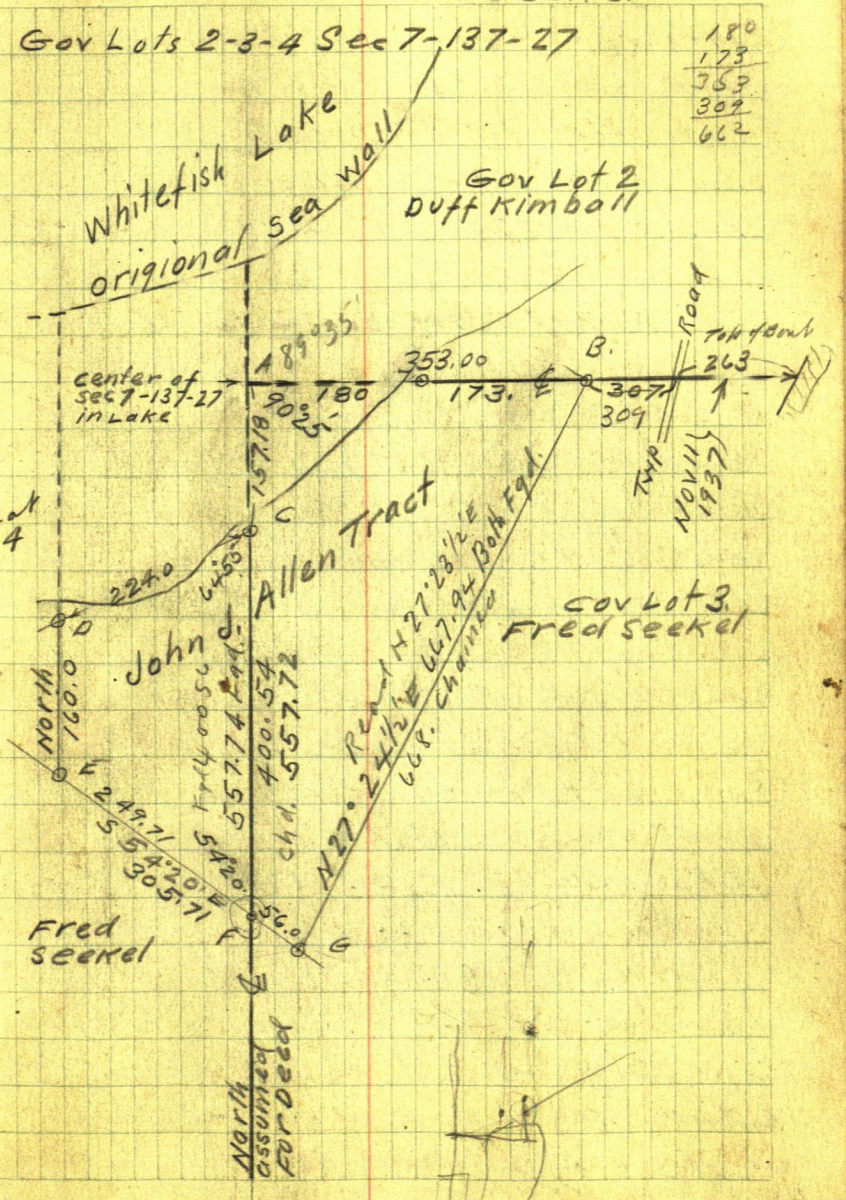
North
assumed
for deed

Road

Nov 11 1937

263

309



97

Deed

John J. Allen tract = 5.20 a. inc

land & water Fred Seckel and Emma S.
his wife Oct 24-1931

A part of Gov Lts 3-4 Sec 7-137-27-5PM

That part of Lot 4 viz Beg @ $US \frac{1}{4}$ in.
center of Sec 7 said pt being now in
W.F. Lake; Thence So on $\&$ on E Bdry Lot 4
dist of 157.18 To IM on present seawall
thence S. still following E. Bdry 400.65
to IM 557.74 ft from pt of beg

thence $N 54^{\circ} 20' W$ 249.71 To IM, then
North 160 ft To IM on seawall thence

North to pt of original seawall thence
NE by on course original shore line
to E Bdry Lot 4; thence South on said E
bdry to place of beg = $2 \frac{1}{2}$ more or less

pt Lot 3 viz: Beg @ $\frac{1}{4}$ cor Sec 7

So on $\&$ and W Bdry Lot 3- 157.18 To IM continue
South 400.50 To IM 557.74 from pt of beg

$S 54^{\circ} 20' E$ 56.00 Ft To IM then $N 27^{\circ} 24 \frac{1}{2}' E$.

667.94 ft to IM on E & W $\&$ 353. Ft E from
pt of beg; then W on N Bdry Lot 3- 173 ft To IM

on seawall thence W on N Bdry 180 ft to pt
of beg = 2.70 a. more or less together with per-
pendicular R of W 2 roads wide over N 33 ft of Lot 3

+ run from NE cor this land in Lot 3- E 307 + 17 -
to pub Road N-5-4 sec 7 is meridian.

Oct. 26-1931

Fred Seckel

I take plat and description to Fred Seckel who pays me \$25. Cash in full for survey of allm tract

\$150.⁰⁰ bal due me for survey of bal of Seckel & Kimball tracts Half to be paid by Seckel & half by Kimball

Survey to be finished when in iron and I will then pay Seckel for meals and help in survey

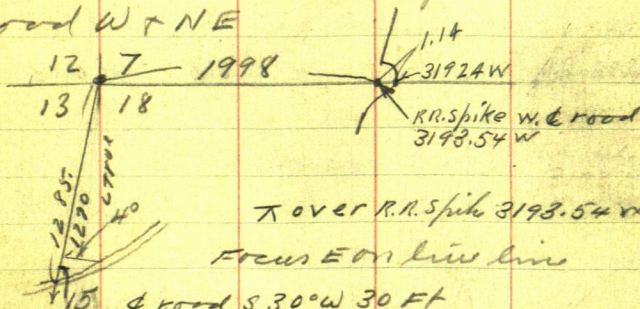
Nati's Help furnished for survey of allm tract I am not to pay for as I charge him only \$25 for Engineer's work in allm tract survey & Seckel to furnish help.

See page 106 This Book

Dec 1-1931 Mr M.E. Ryan writes me to take road measurements for Ellis Hope Case. Dec 2-1931 I write Ryan.

Dec 3-1931 - 10-0 AM. I pick up Grover Burchett and go to NW Cor Sec 18 137-27 Tm - Ch Sam Knudson's line South on W random 18-

137-27 @ 300-600-900-1200 stakes 1270 & road line E 40 ft @ 1285 & road W + NE



15' & road S 30° W 30 FT
 & road S 45° W 65 FT small tree in & road
 S 51° 40' W 112 FT small tree & road
 S 51° 40' W 163 & wood pile in road
 (Note: Trees & wood placed in road by Knudson)
 S 51° 40' W 277 Flag in road 15 SE of SE ch. 1/4 Sec
 S 47° 30' W 350 & road top of Hill all stadia
 S 51° 40' W 450 a bow to Foot of Hill estimated about & road

N Road N 24° E 35 ft & road
 N 29° E 100 " "
 N 26 1/2° E 200 " "

Home @ 1-PM Pay Grover Burchett 50¢ in full work on plat and at 6-PM at Brainerd Give Ryan the plat pick up mallet & L.T. Padlock Reed & I drive back to Jenkins' about 8:30 go to church with party
 Note: 3:30 to Henry Swartz & crew saw wood.

John A. Curo

Hope-Ellis
Road survey
Ryan

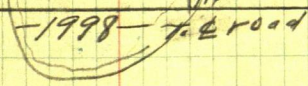
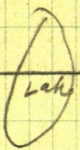
50

US Land

7
Lake

Bertha Ellis Tract
Gov Lot 8
Sec 7-137-27

12 7
13 18



Gov Lot 7
Sec 18 T137 R27

Jos N. Hope Tract

SEEKEL ROAD

Rush
Lake

1270 T. & Road

Sketch about like this handed to Ryan

Dec 4-1931 Friday

All day in Jenkins Mattie goes to
First card game Five Hundred
I go a while - Alma + Reed call

Dec 5-1931 Sat

Reed and I at Seckel Resort 11-AM
dinner @ 12-30 PM. with Mrs Seckel - alone
PM. Reed and I cut bal. of line E 1/4
North to Overflow E side Lot 2 - Sect 7-137-27
drive to NE Cor Sect 7 - Cut line West to
lake Ice too thin to chain west Home at
dark 5 PM. Dance in Jenkins
Alma - Mattie + I go.

Dec 6-1931 Sunday

Dec 16-1931

52

Dec 16-1931 Wed Fred Seekel

Left Cyrus splits wood till 2-PM. Then
 wd drive East Tower NE Cor Sect 7-137-27
 Focus so on line line (turn sw angle on
 Weston line line) @ 234.5 birch stake
 on line @ 275 entire ice NESW low
 shore 300 spikes on ice on line
 516.5 Birch stake 2x36" on line on
 W. bank of low 20ft point runs 25 ft
 NE @ 600-900 spikes on line 1098.3
 Birch stake on line on ice sth 2x36
 1200 spikes 1309. Birch stake on line
 1314.85 spike Hub on ice should
 be $\frac{1}{16}$ Cor as per old Michener
 Survey Book #

Pack Heller to and continue
 E $\frac{1}{16}$ line North on ice My line
 Cuts 2.30 E of Hut 1314.85

Tower 1314.85 continue West on ice
 1314.85 = 2629.40 W set 2x36" Birch
 stake on ice = $\frac{1}{4}$ Cor N side 7-137-27
 4.55 Lv for home.

Jubert Cress

103 Fred Seckel Survey

Dec 17 - 1931 Thurs

Reed due at sch @ 8.30. I take him - Get Loft who replis wood hill 10-45

While Sheriff Little. GE W Wymore

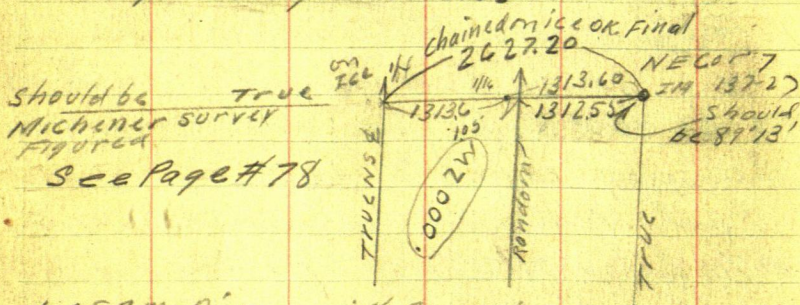
3. miles W of Pequot #1. wants to buy Mathie's sleds. Clear and warm

H^o hard snow. Leave Cyrus and I at Seckel Resort @ 11.30 AM. and walk NW

Continue @ Sec 7 137-27 North

Intersect 2.50 E of Temp 1/4 on ice

Temp N. 1/4 goes W 1.05 to N 1/4 on ice



1-15 PM. Dinner with Seckel

P.M. See Page 66. Pack Heller to Hub
Old Hub 42.51 S Ch W. 15.68 to Correction
Hub Cut line so to lake

Dec 18 - 1931

Reed and I at Conklin Garage Brainerd

copy his Deed Gov Lots 2-3-4-5-6 Sec 6
T 164 N R 30 W - Will survey @ 25
see address Book

Dec 19-1931 Sat

Fred Seckel

Lafe, Reed + I collat Seckel - Beg @ IM

NE Cor Sec 7-137-27 Ch So on old π line

Reed + J.W.C. P.B. Ch. 6002 Stk Mkd 6005"

^{SOUTH} 760.10 Hub: 960.3 Stake 1024.5 Stk Mkd 1024.2"

1200.60 Stk Mkd 1200." 1320.65 - Stk Mkd 1320.5

1500 - 1570. - 1749.35 Hub Mkd 1748.6"

1878.9 Hub Mkd 1878.1" - 1902. Cut Bank

1925.100 - 2643.87 S Set short stake on

ice true $1/4$ Cor. Bet 7-8-137-27

South. 3965.67 Stk on ice = 5'16"

4125 L in 4150 Stake 4256.60

Hub: 4535. S pt for IM ^{See pg 8 Book 33 4251}

4551. Cut Bank on S E Cor Island

4575 enter ice - 4800 - 5100 Stk

in all 3 eat dinner with Seckel

drive car in to S E Cor 7-137-27 OK.

Heller π over old Hub Nail in stamp5032.20 N Page 35 Book # 33 ^{pg 74 # 33}

New BTS viz Basswood 18N 37°40'W 13.6

Maple 9N 78°W 24.6 Red Elm 8S 14°E 14.5

Chain 7.615 To pt 260.0 Ft So of Cor

- Witness Cor to 7-8-17-18-137-27

Set 2x 42" Iron Pipe Thence from

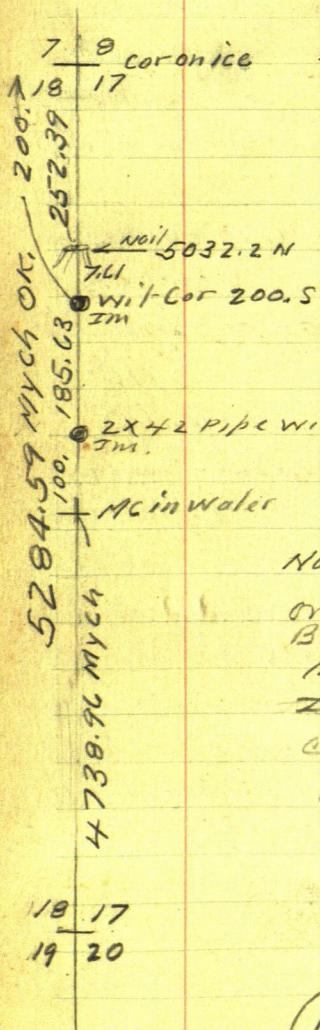
Im Ch S 185.63 To Pt 100. Ft N of MC

Set 2x 42" Iron Pipe w. MC. 100 ft N.

7mc.

105 Fred Seckel
Dec 19-1931 Continued

From Nail in stump etc
N 252.39 Set tall flag
in ice for True Sectors
7-8-17-18-137-29



From 5100 S chain
187.55 to
5287.55 OK.
check Perfect

Nat'l. old 24" Dry Pine
Tree stands SW 136.9
Leans SW and water
Ties in Baldridge
Survey

Nat'l: I kept these notes
on inside front cover of
Book # 33 also Page 76
Name Book.
Ice 8" thick seal our
car Home to Jenkins
at dark.

John W. Cress
Jan 9-1932 Copied from #33.

Fred Seckel and Emma Seckel his wife To John S. Allen 5.20 acres including Land and water
Oct 24-1931. Copy of description - in part

Part Gov Lots 3-4 - Sec 7-137-27 Crow Wing Co Minn. Pt Lot 4
Beg at us 1/4 in center of sec 7 now in Whitefish Lake Thence
S. on E on E Bdry Lot 4 - 157.18 Ft To IM on sea wall cont
South 400.56 To IM = 557.74 Fts. Then N 54° 20' W 24 1/2'
To IM. Then North 160 Ft To IM on sea wall; Then North
To pt on original sea wall; Then N. E. ly on original shore
Line to E Bdry of Lot 4 Thence South on E Bdry Lot 4 to
Pt of Beg containing 2 1/2 acres more or less.

Lot 4

Also part Lot 3 Beg @ us 1/4 in center Sec 7-137-27 Runny
South on E. Bdry Lot 3 - 157.18 Ft To IM. Thence
continue so 400.56 To IM. 557.74 From pt of beg
Then S 54° 20' E 56. Ft To IM. Thence N 27° 24 1/2' E
667.94 Ft To IM on E-W & 353.00 Ft E From pt of Beg
Thence Westerly on N Bdry Lot 3. - 173. Ft to IM on
Present sea wall. Then W. E. ly on said N Bdry 180 Ft to
Pt of beg = 2.70 acres more or less

Lot 3

Together with perpetual R of W of a road 2 Rods wide
to pass over northerly 33 ft of said Gov Lot 3 and to run
From NE cor of land herein conveyed in Lot 3. Easterly
367. Ft more or less to an intersection with the public
highway Then N + S & Sec 7 is considered a meridian in
this description

Note Above is copy of main part of description I drew
for Seckel and Allen Oct 24-1931

John K. Cress

Seckel pd me \$25 cash in full for the Allen survey
Bal due for Main line survey \$150. minus help
and meals - Duff Kimball's to pay half = \$75.

See page 97 This Book

John K. Cress

April 22-1932 Friday

All AM in my office Figuring

old Factor

$5200.80 \text{ US} = 5180.50 \text{ MY old Ch} - 20.30 \text{ short}$
 $5180.50 \text{ MY Ch} = 5175.57 \text{ MY New Ch} - 4.93$
 New Factor = .0048511775 short 25.23 short

4851177 short	1240.80 US 6.92 1234.78	1320.05 6.40 1313.6	1320.05 6.40 1313.6	1320.05 6.40 1313.6
1319.49	1248.73	1310.28	1310.28	1310.28
5277.97	1262.67	1306.96	1306.96	1306.96
1819.49	1276.62	1303.64	1303.64	1303.64
1819.49	1290.57	1300.32	1300.32	1300.32
1819.49	1313.60	1300.32	1300.32	1300.32
1819.49	1321.89	1321.89	1321.89	1321.89

April 3-1933

$\frac{1313.60}{1300.32}$
 13.28
 $\frac{1321.89}{1319.49}$
 2.40
 1.50
 9

5191.54 (E-W)
 3901 W (3900.96)

JUN 23-1939
 N 0.22' E

5287.55

1491

May 3-1932 Tuesday

9-15 AM in my office Figuring Correction
 $E \frac{1}{16}$: At 5285.16 N. The $E \frac{1}{16}$ on N side
 of Sec 7 (intake) bears West 1.05 Sec 7 103
 Correction = .0002 W
 E Road at 4405 N (scaled) goes W 0.88.

June 1-1932 Wed

Alma Reed and I eat supper at
 Sechel resort. I look up alder hubs
 Lewis Sanford at Sechels.

June 4-1932 Sat

Correction See Page 80. - 66

Alma Reed and I 9-30 to Jenkins
 with our lunch. Cut out new brush near
 Saff Kimball's res. Arnold and Pearl
 drive up in two cars Drive to Sechel
 Resort get Deer Lodge College for
 Alma. 11-40 Arnold and Walter
 Goat Lake Reed and I to

East Island

to over corrected Hub 4251.5

Four Nor line line and run

South 283.10 to 4534.10 S

Arnold and Reed drive 2x48 inch

Iron Pipe 7 inches above ground at
S.E. Corner "Seeker Island" once
called "Skibley" Island because he
stole all the white oak ties cut a
"hell of a lot" Arnold

IM sets 10 ft W of - 15 ft N and 15
E of cut bank of Point - 8 ft Hi

From Hut 4251.5 chain 16'30"
North on line line 8160 to 4169.45
Set 2x4x8" Pipe on low shore 4
ft above water today being which is
about one foot below Hi water mark

Hut 4251.5 is 1 1/2 x 12" oak Hut
about 28 ft west of bank

IM at 4169.45 is 35 ft W of Low
bank 45 ft W of water and 30 ft
So of low bank and 40 ft
So of water today

12-40 PM start back in boat
1-30 See Page 79 ⁸⁰⁻¹⁰³ Tower Hut 1144.8 N

Correction

East 1/16 line = $P_{9102}^{80} = .0002W$

Sleep till 2:30 PM. From Hut 1144.8 N
Chain N 71.2 to 8 inch Basswood tree
which will be on corrected line 1216.0 N
@ 1144.8 + 95.2 = 1240 N enter water

June 4-1931 continued

From Hub 1144.8 N offset Heller \times 5 ft
 West line part 8" Ben line near line
 Stadia over small lake reads 3.30 =
 330 ft plus 15 inch focal length added
 = $331.25 + 1144.8 = 1476.05$ RR spike
 on So bank of Hen Lake 16 ft so of Brink
 and 62.5 N of Small Bay Full of Black
 Bass. From 1144.8 Chan to 77. ft to
 RR spike 1067.8 N 2 ft so of path and 20 ft
 N of Brink.

Correction = 0002 W

East 1/16 Line Sec 7

1067.8 N gas west	0.21
1144.8 N " "	0.23
1476.05 N " "	0.30

At 1067.8 N set RR spike 0.21 west and drive
 2x2x 60 inch dry stake well into the ground
 at 1144.8 N set RR spike 0.23 west and set stake.
 At 1476.05 N (Stadia) set 1x12" Ford axial
 0.30 west for line N-S-1/16 line pull up RR
 spike. Set Red flag on true line
 Drive West to Otto Seckel Res

Page 90

June 4-1932 continued

TOVER R.R. Spike $\frac{1}{16}$ in cen of S Half

Notes Pg 90, Plot Pg 91-78 FOCUS N $0^{\circ} 22' E$ Run

E $0^{\circ} 01\frac{1}{2}' N$ NE Angle = $89^{\circ} 36\frac{1}{2}'$

OK. Turn bath angles Keed sets 2×36
while slabs East about 900 on true $\frac{1}{16}$
line if any Over Bay

Ties to R.R. Spike $\frac{1}{16}$ in cen of S half

Oak 12 N $64^{\circ} 15' E$ 18.75

Bar 7 N $46^{\circ} 20' W$ 23.42

Turned from
true line N.
assumed on N.

Twinn Birch 10 (at base) S $47^{\circ} 40' W$ 12.41

To run so b dry Kimball Tract

R.R. Spike 627 E

East m & 662 & Road 697 Hub 33 out

Tall slabs 700-800-812.40 Hub & Tall

slabs 900-916.5 Hub 929.7 Tall 8th

940 Birch 12 ft Cut bank

(Nov 11-1937 it is 263 FT From & Road E. to Cut bank).

NS- $\frac{1}{16}$ Line, & Road 4405 sealed. ch

South 58 ft Rough to R.R. Spike Hill

4347 N ch w 0.87 Hub on line line

about 200 ft N of wall & Road at

North 4627. 4867 ft Rough

Set R.R. Spike west 0.97 about

150 so of wall

August 10-1932 Wed Duff Kimball

Reed and I L. Jenkins 11-9 AM. Callon.

Museum Stone. Callon Hazel Kimball

Heller π over Sta #4. Page 136 Book 33.

Focus on Sta #3. intersect road line with

E $\frac{1}{16}$ N-S corrected line Sec 7-137-27

Set R.R. Spike in S. wheel track narrow graded
road 1. ft from cutbank TIES

Oak 14 N $13^{\circ}10'E$ 35.45

Birch 11.5 $26^{\circ}50'E$ 18.40, Birch 10. (1 ft N of
Birch stump) $S79^{\circ}50'W$ 29.30 only 3.

Turned from E $\frac{1}{16}$ line N-S - Vol 6

Using this $\frac{1}{16}$ line as a New Meridian road
angle reads $S47^{\circ}37'W$. the old course
taken from the East line of this Sec 7 gives
it as $S47^{\circ}31'W$ Pg 136-Book 33 Diff $0^{\circ}06'$

Drive to Sta 7. Pg 138 Book 33 BSN $30^{\circ}15'E$

Run $S22^{\circ}37'W$ 258.05 ft to NEW Sta 8. =

R.R. Spike in $\frac{1}{16}$ graded road at intersection
of corrected E+W $\frac{1}{16}$ Sec 7-137-27 at 35. ft
E of Hub 627. $627+35 = 662.0$ E of
True center of Sec 7-137-27 (in lake)

π over Hub 662. $\frac{1}{16}$ runs $S89^{\circ}19\frac{1}{2}'W$

Note: This is a continuation of the old road
traverse taken from the E Sec line as a
Meridian which is really $N0^{\circ}41'E$ see Pg 78
this Book

New St 8 ties Elm 10 N 43° E 24.82 To
 center of 6 inch spot leaning NE
 Butternut 8 N 33° 12' W 32.10 ok same
 Maple 4 S 6° 50' E 32.10
 Basswood 6 S 63° 38' W 54.02 To spots at base.

For angle E-W & see page 91 This book
 S 89° 57' W using so line as E-W

- $\frac{.41}{589.16W}$

589.14W

589.16W

$\frac{.03\frac{1}{2}}{.03\frac{1}{2}}$ diff ?

Fred Seckel pays me \$10. on account
 Bal \$65. I meet Irene White

and her husband Johnson 7
 919 - S 12th St Saint Cloud Minn

Mr Johnson will buy 100 x 160 ft west
 side Allen tract I will charge him
 "ten or fifteen dollars" to survey and
 draw his deed "in another paragraph say
 this land extends to waters edge" ok.

Home at 7:30 P.M. Alma still
 at Bakers Reed and I alone

John W. Cross

Aug 11-1931 Thursday

Reed sick last night. I work on plot
for Hazel Kimball Nisselius
Spearfish S.D.

August 17-1932

Reed & Norbert Kemper surveying for
Mackey Co I take Alma to Toby farm

Fred Seckel calls and will come with
Johnson to house deed drawn. 25¢ to

Glady's Crawford for messenger fees

I check up survey and find angles
lump perfect on Sufferwood line P 7 112. ^{OK.}

Fred Seckel telephones and comes
to Jenkins. I draw deed for Johnson
and we all drive to Brammer

I pay Earl Jenkins \$1. to re-write deed
Fred pays .50¢ for revenue stamp
and Johnson pays \$1. for recording

I promise to make Jenkins a
sketch. Home at 9-45 and find
Alma still with Toby

Lope Cyrus cuts line all day on
Mattie's survey. \$1.

Aug 19-1932 Friday

Pay Lofe Cyrus \$1. for yesterdays work.
Take Alma back to Toby farm

all day in the office Show Jones 20
ocers - Reed and Kemper come home
at noon and go back.

Aug 29-1932 Monday

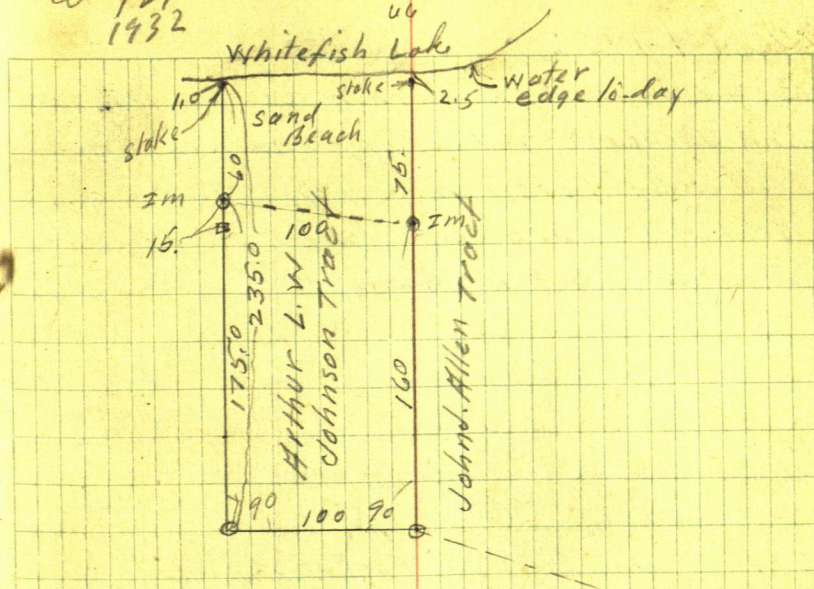
9. AM. Reed and I drive to Fred
Seckel res. & over IM at SW cor
John Allen tract - Focus 14 on NW cor
Turn 90° West 100. ft set 2x30" pipe in
ground for SW cor of Arthur L. W.
Johnson tract & over NW cor Allen
tract run West 100. set 2 1/2 x 30" dug 2 wood
Hub thence North 15 ft set 2 1/2 x 30" pipe
on low sea wall for NW cor Johnson
tract. Heavy shower

Drive E and set 2x30" pipe in ground
on 20 line Lot 2 - = E-W & set 7-
137-27 Cham East 254.50 set 2x30"
pipe over Hub 16.3 W of Hall slab & 23 W
of hi bench Shoreline runs about N30°E
150 by eye. Drive to Duff Knutball and
Ch 201.1 Road angle #4. T. spike in road
on E 1/16 line Lot 2-7-137-27

Aug 29-
1932

Seckel
06

116



From R.R. spike in saw wheel track
(Trison Page 112) chain

South on E Line Gov Lot 2-

50.20 2m in round pipe 2 1/2 x 36"

189.3 tall stake on side hill @ 213.5 2m

2" pipe 36" @ 228 Birch cut bank

7/16" 235 foot of cut bank 15 ft

from water edge NE

Begin @ = R.R. spike saw wheel track ch

North on E Line Lot 2 @ 300 + 170.2 = 470.2

2m 2 1/2 x 36 then from $\frac{1}{2}$ 270° ch N down

hill 72.3 2m spike 102.6 tall stake 118.0 ft

from 2m 1x1 Birch 10 ft 150 foot 230 sth

on sand beach 4 ft from water

117

Sept 1-1932

3-42 PM. Cloudy-rain Norbert Kemper
and Jack Coro take Lake Shore White.
Fish Lake Lots 2 and 137-27-Su 7.
Heller Transit over stake 230 Pp 116-0.0
set with π BS. S on True E Bdry

Gov Lot 2.

N 45°	E	5. ft	Water edge
S 63°	E	60	" "
S 82° 20'	E	200	" "
S 89° 20'	E	285	" "
N 87° 10'	E	350	" "
N 85° 45'	E	410	" "
N 85° 05'	E	525	" "
N 86° 40'	E	615	" "
S 89°	E	368	Foot of sea wall
S 77° 20'	E	210	" " " "
S 47°	E	110	" " " "

N 21°	W	60	Water edge
N 42° 15'	W	90	" "
N 77° 30'	W	170	" "
S 82° 50'	W	260	" "

S 52°	W	140	Foot Cut Bank
S 45°	W	160	Top of Cut Bank 15 Ft Hi
S 38° 30'	W	120	Foot Cut Bank

Sta 0.0. N of SE Cor Gov Lot 2
Run S 63° 33' W 425. To Sta N 1
Heller over Sta N 1 BS N 63° 33' E
Water 1. Ft R.
N 78° 30' E 215 Foot of Cut Bank Top 50
Ft Hi Runs 100 Ft back

S 45° E	110	Foot of 250 Top of Bank
S 9°	W 110	Foot of hill
S 30°	W 100	Water edge Var 6° 30'

Sta N 1. Run S 17° 07' W 260 To Sta 2

Hard rain we went to car and filed
Balson & Dr Jones Rt H 5 Bul
John Wren

4:30 to 5:00 PM Rain - 5:30 to Segals
for water Arnold gives me Town Warrant
\$25.00 for survey of Stone Sch Ho
I have it signed by
and put in check by Emil Pettekow
Met Aunt May - (Ed Kimball and
his brother John

5:45 PM drive 2 1/2 x 40 inch pipe
at Hub 118 N =

Tower Sta 2, BS N 17° 07' E on S 61.
Water 3 FT R. Foot of Hill 18 FT E
Tap 70 Hi 150 ft back
S 2° W 150 Foot cut bank
S 71° 30' W 150 Water
S 4° W 340 Foot cut bank
S 7° 30' W 340 Water edge

Run S. 5° 15' W 560 To Sta N° 3.

Tower #3 BS N 5° 15' E Var Reads 6' 30'
Water 3 FT R. Bank 30 FT L.
Tap 100 Back 50 FT Hi
S 4° W 100 Water
S 4° 20' W 160 Water
S 8° 20' E 230 Foot cut bank. 35 Hi. 50 Back
S 2° E 385 Foot 20 Hi. 50 Back cut bank
S 4° 45' W 375 Water

Run S 6° 42' W 630 To Sta 4.

T @ Sta N° 4.
Water 6 FT R. Foot 25 L. Tap 35 Hi. 75 Back

6:30 PM Out for net

Norbert eats supper with us I give him
\$1 in full Wals S. T. Heede.

John K. Cross

119

Aug 2-1932

Up at 6-AM. Norbert calls I Lv
without Breakfast Need sleeping

7-24 AM. Hellen over Sto N^o ④
BS N 6° 42' E 200 Foot Cut
Bank 12 ft Hⁱ

S 6° 30' W 240 Point of long hill Foot
at cut bank

Logoon 11'25 East and so 100 across

S 17° 30' W 200 water edge

S 20° W 400 " " Vor 6° 15'

S 24° 24' W 660 To Slo ⑤

Hellen over Sto N^o ⑤ BS N 24° 24' E
N 38° 40' E 290 N Point 4' Cut Bank
From the South Logoon so 99 100 E

N 42° E 200 Foot Cut Bank 5 ft Hⁱ

N 52° E 120 " " " 5 "

S 71° E 80 " " " 4 "

S 33° E 100 " " " 4 "

Note: Bank runs straight-southly
To Allen Road. so end Lot 2

S 7° 40' W 280 in Road at foot of hill

S 2° W 120 North Point of ditch

runs S-Widens out 2 Roads

S 13° W 200 Pt of land from West Loose Sand

S 13° W 175 S 20° W 230 So Side of Point

S 7° W 130 S 15° W 100 S 30° W 130

S 40° W 200 - Cut Bank 5 ft Hⁱ

S 45° W 250

S 47° 30' W 320 Cut Bank 4 ft Hⁱ

S 52° W 380 Water

S 46° W 120 "

N 45° W 6 "

N 35° E 100 390.0K

S 45° 25' W 240 1 m on N Bdry Allen

Tract in ³⁹Shine Whitefish Lake - Slo ④

X over Slo N^o ⑥ = 1 m BS N 45° 25' E

So Line Lot 2. bears N 89° 21' E Roughly

meet John S. Allen and Fred Seibel.

East Side Lot 2.

Walk E from Hut 18.7 E of I m. and
 U. 40. E of stake mark (929.7 E)
 Run N 37° 14' E 160 FT To Sta No. 1.

5.40

TOVER Sta No. 1. Walk 5 P.R. Foot of Rsh. 10' L
 Top 15 Hi 35 Book

S 25° W 140 water

S 25° W 70 "

S 10° W 15 "

N 10° E 10 "

N 10° E 30 "

N 18° E 115 "

N 113° E 120 Foot Rsh 15 Hi 35 Book

N 20° E 160 Water

N 16° E 160 Foot Top 10 Hi 15 Book

see later care

Run N 18° 16' E 246. To Sta No. 2.

TOVER 2. Walk 1. R. Bank 15' L Top 12 Hi 12 Book

N 18° 16' E 160 Water

N 7° E 160 Foot Top 10 Hi 10 Book

Run

N 18° 16' E 268 To Sta No. 3.

1932

TOVER No. 3. Walk 1 R. Rsh 10 L. 15 up 25 Book

S 8° W 40 water edge

S 21° W 40 To 60 Foot of bank

S 25° W 150 Foot "

N 7° E 50 water

N 15° W 25 To 60 Foot of bank

N 1° E 125 Water

N 5° W 175 "

N 5° W 230 "

N 3° W 300 "

North 380 "

" 480 "

N 2° 30' E 520 "

N 1° E 580 "

N 5° E 640 "

N 5° E 675 "

N 4° 40' E 700 Foot of bank

N 0° 50' E 600 "

North 550 "

N 3° W 265 "

N 14° W 150 "

11.15 AM Out and cut west line Johnson
 level. Home for dinner 1-20 PM.

Johnson

Nix

Nov 8, 1932
 This plot up 200 ft
 short of Bel Shore #1
 and Shore line North
 600

121. Seckel ①

② J.A. McEwen
Gov W. Staley

Sept 2-1932 Continued pm

Norbert Kemper cuts line on Matthias
land. I work on these notes Reed
no work. Monkeying with his old
Ford

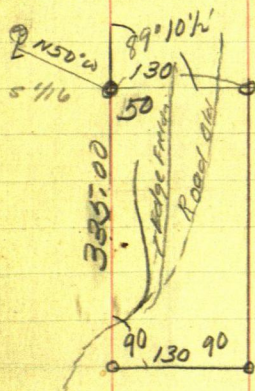
Bal Deup from Seckel \$35

August 29-1933

10 ✓ Not year
25 ✓ one ok.

Reed & I drive to Seckels

Sept 3-1933 Note one year later



Sept 2-1933 Note
Some data as above but year later

J.A. McEwen calls of Janhain
for me to make survey

Sept 4-1933 Monday

10-30 am Reed and I or

Backman Res 11 AM. Pick up Carl
Schultze At Silver Peak 12.00 Noon

Cot 50 Line See 12-137-28 Eat Lunch

Talk with Williams

Survey for J.A. McEwen Heller over 1/16 Co

zm at New Cor Gov Lot 7 Sec. 7-137-27
Run N 89° 10' W @ 50 E edge clearing @ 94.5' and
Run NE SW @ 130. dist 2x 30" zm. (Aug 2 1/16 @ 6 S.
335' and zm. Turn E 90° @ 130' and zm. Turn 90° cut
line N set 3 hubs McKeown Payson \$7.20 in full
See Reed pg Carl stays with us in Janhain

Gov Lot 7. Sec 7-137-27
SW 1/4 of SW 1/4

Staley

Guy W. Staley
ONE DEED
M'EWEN

122

Sept 5-1933. Tues (2)

Carl Schultze played with us last night.

Up at 7-30 - copy notes will be sent from

Guy W. Staley & Lulu Staley his wife 3453

Kyle Ave N. Robinsdale Minn

To J. A. M'EWEN.

Deed

(123)

Oct 27-1932

①

Sta	+ S	HI	- S	Elev
00	8.13	108.13		100.00 assumed
10			5.05	
1			5.45	
2			4.20	
-60			4.57	
3			3.10	
4			2.00	
TP 60			1.26	106.87
	10.08	116.95		
5				
+70			5.90	
7			4.80	
TP			0.83	116.12
	0.38	116.50		
9-72			0.00	116.50
10+55			4.80	
TP.			10.29	106.21
13+44	1.75	107.96 104.46	4.00	103.96 100.46
14.00			6.30	
15.			7.69	100.27
1314.			0.89	107.07

Babson (2)

8.13

124

503

3.10

Running South To Pelican Lake
on top of water in Richbed
& EW Road

peg @ sta 9+70

10' R @ sta 11+75

1st seawall

Water Pelican Lake

short limbs w side 6" VP 354 sta 11+55

725

3

Sta	+S	HI	-S	Elev
0	7.69	107.69		100.00
TP			1.75	105.94
	10.43	116.37		
TP			2.56	113.81
	3.16	116.97		
TP.			10.31	106.66
	1.58	108.24		
TP.			8.49	99.75

B.M.

	.78	106.76	7.83	105.98
				98.93

Running North

Top of Water Pelican Lake
Checking Back.

Peg - Top of water S edge. Rice Lake

⊙ K. Check 0.25 and 0.27

1-35 PM. Ben Anderson goes home
to Pequot

1932

Top of Water Pelican lake = 1.07 drop in lake
Since 1931 See P 9

127

Williamson
M^cEwen 12-137-28
①

Williamson-M^cEwen Sec 12-137-28

Sept 4-1933 Monday Reed, Carl Schutze
and I surveying for M^cEwen and Staley - meet
Henry Williamson who says he wants his lines
about Sept 15-14

Sept 14-1933 Thursday
Receive letter from J.A. M^cEwen who says
Williamson wants me to start his survey

Sept 18-1933 Monday
10.0 AM. Reed and I at Silver Peak
copy deeds. Henry Williamson &
wife at 11 AM. I agree to settle dispo-
-ted line for \$25 Williamson agrees to pay it
if satisfactory Dinner with M^cEwen
PM

Williamson shows me lines and cor-
ners established by Knudsen & Pearl

Reed and I cut out Knudsen's
line on so side of sec 12-137-28

Harry Williamson comes out about 4 PM
and helps cut line too dark to see
home late

Jahred Cress

Sept 20-1933

Reed's 2nd day on Hay Bailer for
Geo La Zotte. Alma & Belly at Bryants
for dinner I eat alone Lv Jenkins

1-PM. Pay Bill Setzer 30¢ 2. Colliflowers

supper with Dwight and Mary Evening

US Notes Sec 12-137-28

North on Range Line $\sqrt{9^\circ E}$

$2567 = (1694.22) MC. \checkmark$

West Bet 12-13- $\sqrt{9^\circ 30' E}$

$2811 (= 1855.26) MC. \checkmark$

Meanders In Sec 12

$S 72^\circ 15' W 769 (= 507.54) S 47^\circ W 2440$
 $(= 1610.40) S 23^\circ W 750 (= 495.0) MC.$

$S 72^\circ 15' W 507.54$

$SIN 95240 \times 507.54 = 483.38 W$
 $COS 30486 \times 507.54 = 155.43 S$

$S 47^\circ W 1610.40$

$SIN 73135 \times 1610.4 = 1177.77 W + 483.38 = 1661.15 W$
 $COS 68200 \times 1610.4 = 1098.39 + 155.43 = 1253.82 S$

$S 23^\circ W 495.0$

$SIN 390.73 \times 495 = 193.41 W + 1661.15 = 1854.56 W$
 $COS 92050 \times 495 = 455.65 + 1253.82 = 1709.47 S$

1855.26 on sec line
 1854.56 via meanders
.70 E of MC.

1694.22 on sec line
 1709.47 via Meander
15.22 S of MC.

Note: via Meander line throws WEST MC.
15.22 S and 0.70 E of Point set first for West MC.

sleep at Dwight's

John W Curro

③ Harry Williamson
JAMES MCEWEN
12-137-28

128

Sept 21-1933 Thurs

Up at 6. Drive home to Jenkins for breakfast
9am. Pick up Floyd Newman Drive to
Williamson Resort he goes with us cut line N
Use wheel-barrow-fill marsh West to old
4x4 stake set By Knudsen for Williams SE Cor
Dinner with Williamson PM.

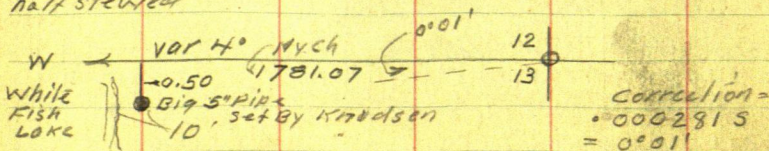
Floyd and I Beg @ SE Cor Sec 12-137-28 Ch

West on Random: 178.3 Hub 195.53 Hub small pin

205.40 Hub 264. Swamp N-S. 484. LV SWP N10°W
S10°E 518. Stake 590 Enter same SWAMP NESW
Point extends 150 N 700. LV SWAMP N10°E S10°W
818. Stake 930. Hub 945.60 & Silver Peak Road
N20°E S20°W 1118. Stake 1337.95 Hub 1349. &
16" NP Line Ribs N side 1359.35 Hub 1418 Stake
1428.95 Iron 1" Pin set By Pearl or Knudsen
1545.3 Hub 1600 Stake 1633 Enter water in
Swamp N-S 1660.60 old 4x4 Stake in Swamp
set By Knudsen for Williamson's SE Cor
in water Leans crooked at W end of our "Fill"
1715 LV SWAMP N-S 1600 + 18107 = 1781.07
Big Iron Pipe on Beach set By Knudsen sets
South 0.50 of a foot Check chain 1600 + 120.47
= 1781.47 Note: Williamson and I check
chain with 100 ft tape O.K. 1781.07

Note: Big Iron Pipe Leans NE by ice
Williamson and I straightened top SW at noon
Williamson Flagg set Double Center Hub 0.50 N
of Big Pipe O.K.

Quit at 6-pm. Drive to Silver Peak, MCEWEN
gives me Pearl's Pencil sketch Preachers and
Floyd at our house for supper - Dwight comes in
half stewed



Jahn McEwen

Williamson
MSEWEN

129

(4)

: 000281-S-Corrections S Line sec 12-137-28

178.39025 S	0.04	195.539025	0.05
205.40 W " S	0.06	930 W " S	0.26
1337.95 " " S	0.38	1359.35 " " S	0.38
1428.95 " " S	0.40 Iron	1545.30 " " S	0.43

Address

Henry Williamson Fireman NPAy Brainerd
 Home at Silver Peak Or Sunday AM. Lv For
 Brainerd Monday 4-30 to 5 PM. Stays at
 Gorman Studio Apt H2-714 Front St Brd
 Note: Also home at Silver Peak Thursday

1855.26 us ch

1781.07

74.19 Washed off.

N 90° 25' 22" = 1694.22 US

W 19° 30' 28" = 1855.26 US

①

Fred Seekel

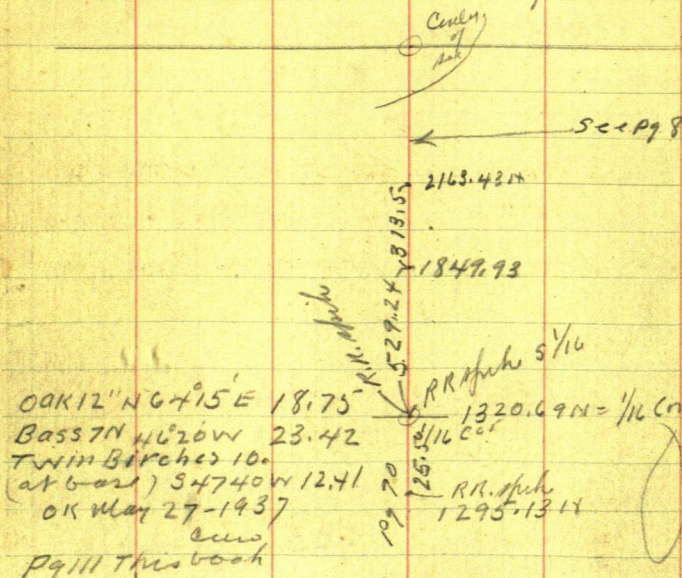
May 26-27-1937 in flat old Hales
and 20 in

May 27-1937 Seekel will

Otto Seekel res

Sec 7-137-27

N-S-~~E~~ True Line P990-111 This Bk
 $\frac{1}{16}$ Cor in center So Half Cu 7

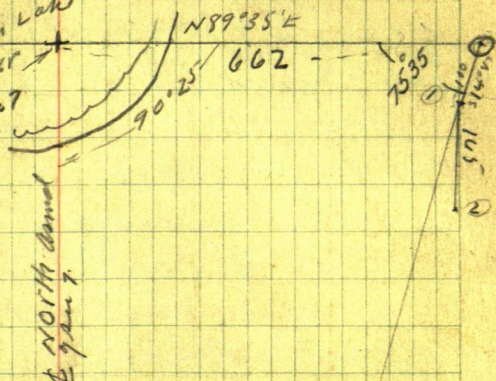


May 28-1937

Clarence Hodge-Reed and I at 9-AM

Twp Road

See Pg 96

Whitfish Lake
center
st 7

By @ I m & Road 662 ft E From true
center of Sec 7-137-27 BS S 89° 35' W on
I m 180° E From line & Making N. S. & of Sec
as Meridian Run & Road

S 14° W 100 to st 1 T @ 1 R

S 0° 30' W 165 to st 2 T @ 2 "

S 7° 30' W 170 to " 3

S 30° 30' W 285 " 4

S 27° W 435 + 27 = 462. St 5 = 2 1/2 x 20" pipe

St 5 - R.R. ^{PIPE} spike in E triangle of near
W P 20 N 22° 20' W 100.53

" 16 N 81° 10' W 72.50

Turned from true West Boley on road 675'
South Parallel to W Boley 85.00 ft
set 2 1/2 x 36' pipe 15 N of water

132

(3)

May 28-37 cont'd Fred Seekel
Heller π @ Sta 5 The $\frac{1}{16}$ IM in

Center of So Half of Arc 7-137-27
bears S $47^{\circ}41'W$ 352.98 Feet
Sine $73944 \times 352.98 = 261.02 W$
Cos $67323 \times 352.98 = 237.65 S$

PM To Beannet

Make out Seekel's will

Otto Hauser takes Seekel home

~~May 28-37 cont'd~~

Baldue Curo - talat work on Last
will and Testament of Fred Seekel
before Bill Swanson Pres May 28-1937
= talat \$25⁰⁰

Old Notes; Find slip which reads:
June 30-1937 Geo Smith and John W
Curo L. Jenkins 2-30 PM See Field Book
227 P 9 52-57-63 spike in slipup"
3490.7 Bertha Ellis Sawyer.
Correction = .003931 - S

Fred Seckel

Aug 8-1937 Sunday

Martha and I call at 5 pm. arrange with
Arnold Seckel for Cabbage

Aug 9-1937 Monday

Check all Field Books ²¹³⁻²¹⁴⁻ 31-33-201-227

This Book N^o 227.

Page 89-90-111. to in can Soltall 7-137-27
R.R. spike Ties Pg 111-130 This Book

Aug 11-1937 Geo Smith & I work 10 AM.
to 16-30 AM on Seckel plat 50 Bet 5-6, 6-7.

Aug -- 37-

Geo Smith and I cut out
n.s. @ 3 Hrs am.

Aug 17-1937 Tues

all am in Seckel

134

5 Fred Seckel

Aug 18-1937

Pick up Clarence Hodge
Geo Smith on Seckel tract
@ 9-25 am - Cloudy

Town SW cor IM Art
Johnson tract Pg 116 Calhoun
West-Hit trees - DRIVE ETS
Get Edginger at Phil Stroud
Sawmill Boach at noon
Eat our lunch PM

Town SW cor Johnson lot
Check Chain East 100.00 chf
Looking N Line cut 0.05 E of IM
175N So that IM at SW cor get
knocked N 0.03 of foot
Set stake on shore N 33° 05' W 257.70
Art says 1-st lat is

Lawrence (L.A.) White 100-
2nd Edmund McToggart 100
3rd "Wallis" Ziebarth 3 Lats ?
John Allen - Lawrence White

N 85° 15' W

136

7

π over 257.7 - Cut Bank 3' N
Foot 10 N Water 30' N 7' H

Cut Bk 4' H 575 E 25 Low shore

S 72° E 100 Run

217.9

122

346.9

N 85° 15' W @

+ 10 Cut B. 4' N Foot 15 N. water 25

Sta ① 7' H 13. Foot 17 water 35

+ 50 " Cut Bk 14 N Foot 25 water 35

+ 51 old stake N 11:40 P.

+ 80 Cut Bk 12 N 12 H

12' N Bank slopes ^{down} N to water

Top 12 H. Foot 30 water 55

217.90 Hut under π on N Bank 20 H

8 2 10

217.9 + 95.5 = 253.4 Iron Pin

35 5

253.4 and stake set L 0.805

2+50 on N Bank 20' H / Slopes N.

@ 35 foot + 25 = 160 to water

@ 300 slopes N @ 30 foot @ 50 water

+ 20 same - 129.

217.90 + 129.0 = 346.90 Hut wood

Top Cut Bk 20 H N 4' Foot 20 water 20

" " West 10 Pile Cut Bk to water

② π over 346.9 BS S 85° 15' E Ver Rods 6° 40'

old stake bears S 47° 05' W 12.20

" S 58° 20' W 49.90 - 3' to Bank

" sth S 55° W 113.50 7" " "

Aug 18-37 cont'd 8 Fred Seckel

still over 346.9 Top of Cut Bank

N 85° 15' W 9 ft Cut Bk

S 61° 30' W 93.5 Cut Bk 15 ft

slopes almost straight down

water 10' N. of Top of Cut Bank

Run

③ S 56° 58' W 111.30 Bk 4' R. T over 111.3 N ③

S 39° 37' W 280.85 @ 100 Bk 3' R

@ 200 Top Cut Bank 12' R. Water 20 ft

20 ft H₂O no Beach 280.85 Bk 2' R,

④ S 16° 06' W 133.4 @ +60 Top Cut Bk 10 R

⑤ @ 100 Bk 9 R. 133.4 Bk 2' R. Water 20 No Beach

Continues S 16° 06' E @ 133.4 + 10 Bk

3' L @ +30 Bk 2' L @ +44.6 =

W oak 5' on corner SW cor of the land

4' up - 4 to water

T over 133.4 Run South

@ 55 L v marker Foot of Hill

Water 12' R. Enter Sand flat

@ 130 Water 12 R. @ 152 Water

L Bk Pine Run, Edge of Sand

rim SE 55 and NE 65 to

Sand Beach 30 ft from Timber

From 133.4 Run S 41° E about 150

to Pine Point line cut; rid. hill 15 ft

from base Quit at 5-32, P.M.

138

9

Aug 24-1937 ^{Tues} Monday

up @ 6:30 Bert Brammerlo - Clara
and Allen Lv for State Park @ 9-15.
Martha - Cecil - Harold - Caryl and
I pack. At Fred Seckel Resort
11:30 A.M. Arnold gives us cottage
N^o and we cook our dinner
P.M.

1-30 Find Arnold, Louie Sanford
and at Art Johnson res
Gardold Weismer and I Lv the gang
at the cottage and Lv Car and Transit
at Pearl Seckel res and walk to
road. We show Arnold where
locat around lake - Talk with
Irene and Art Johnson

I promise to make a sketch and
send Art his address will be @
Public School - St Cloud also
Edwin McTaggart @ Public School
Pierre? S. Dak

Gardold walks so he can get
Field Book N^o 227 This book, also
my glasses and steel life

Look up old notes for Hubs
P 96-90-82-88
James O. Ours

Aug 24-37 Cont'd

2-30 PM. Fred Seckel holds flag pole
 form. Gerald Weisman holds tape
 We find R.R. Spike Hubs @ 2163. x3 - 1849.93
 and 1295.13 N of $\frac{1}{4}$ on S side. Sec 7-137-27
 π over 1295.13 Take Water edge Pine
 River and Overflow

Water edge South 62. S 48° E 106.

S 61° E 135. S 72° E 155 Point extends E 20 ft

Sand Bar: S 82° E 155 Sand Bar Run SE 20.

N 41° E 182 into water + 50 = 230 L 1

Water says L. West 6 ft. Run East by 150
 = Overflow.

River S 62: S 46° W 87: S 49° W 141:

S 56° W 177: S 64° W 196: Spout lady @ π set

pick at N 80° 08' W. Quit @ 5 pm. $\frac{1}{2}$ day.

Supper at Seubins: Buy Blueberries

13# @ 12¢ = \$1.56 8-30 to 10 PM. Cece & I at

Francis Woudshires.

140

(11)

August 25-37 Wed. ^{Henry}
 up @ 7-AM; 8 AM Rain. Call ~~to~~ ^{to} ~~Saturday~~ that
 I cannot come to-day. 10-15 cloudy
 Dinner at Jenkin. PM:
 Martha-Cecil-Gorold-Caryl and I
 at Seckel Resort 1-30. Car at Pearl's
 kids go swimming. Louie
 and Joe Hauser cut-fly & chain
 T. over Hut 1295.13 N of 1/4 on
 N-S-C Sect 7-137-27 Run
 N80°05'W 298.50 Hut + 25 = 325
 enter water NW-SE. Water lies.

S

August 26-1937

As I kept my notes on a
 loose sheet of paper in my pocket
 I cannot find it
 anyhow we run N or about 200
 NE same and N. about 315
 Will re-run this later

529.24

1295-
 90
 385

Sept 20-1937 Monday.

Maitha and I up at 8 am.

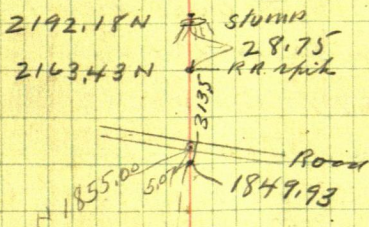
Fine bright cool day.

Geo Smith is working for all maids. Herb Kemper says he will work with me @ \$2. and of course board at home I will pay his board when he is away from Jenkins

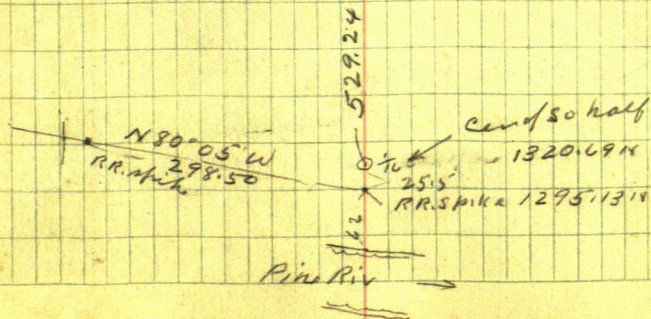
10 PM, on mail. Page 89

82-88-90-96-138-89

1320.69
529.24
1849.93



Page 89



Pine Riv

142

N 59°55'W

(13)

Sept 20-37 cont'd

AM. Dig up IMRS. at Sch Ho Junhim

PM 1-50 PM Herbert Kempen

and I Lv Junhim. Meet young

Schutz on the road and tell
him Carl Ryan and Hank

are looking for him

At 2-30 - Cut brush 4 PM π over

1849.93 N Chain N 5.07 To

1855.00 N 1/2 R.R. Spike

Hub in $\&$ E W Road

1849.93
5.07
1855.00

At 2192.18 Page 89. we find my real
oak plug which we replace with
60# spike driver in its place in
the stump. π over Hub 1855.00Focus N on line $\&$ of see Run

S 66°55'E 273.7 Ft to Hub = R.R. Spike 1 ft to

S. wheel track; Bend in road lies

S 69°43'E 167. Feet

Sta 0.0 = 1855.00 Run N 59°55'W

@ 156.10 Hub = R.R. Spike 1.30 N of $\&$ Road@ 218.10 Sta 1 = R.R. Spike 4 ft S of $\&$ Rd

in curve. @ 291.50 Sta 2 = R.R. Spike

2A π over Sta 2 BS S 59°55'E and Run

S 63°55'W @ 40.30 15 L. Water 30 L

@ 100.30 20 L Water 40 L

(14) $S1^{\circ}10'W$

143

- @ 150 Bog 00 L walu 15 L
- @ 150 enter dry bog @ 185 L Bog 15 R,
- @ 185 walu 40 L @ 200 Bog 25 L
- @ 2 25 Bog 40 L walu 125 L
- @ 250 Bog 25 L walu same
- @ 275 Bog and walu 40 L 300 Pin
- @ 300 Bog 20 L @ 325 Bog 10 L walu 15 L
- @ 350 Bog 3 L walu 6 L
- @ 362 Bog 0.0 L walu 3 L
- @ 388.2 Sto 3, Bog 5 L walu 10 L

Run over Sta 1. BS $S59^{\circ}55'E$. Run
 $S1^{\circ}10'W$ @ 35 walu 15 R. @ 50 walu 10 R.
@ 100 pin walu 20 R. @ 125 — walu 25 R
@ 200 to 220 walu 10 R. @ 250 w 30 R.
@ 304.20 Sto 4. = R.R. spike

Quit at 6.06 PM.

- @ Sta 1. walu $S45W$ 30 ft. Run
- Went @ 35 Bog 0.0 L walu 10 L
- @ 60 Bog 10 R walu 5 L
- @ 75 Bog 10 R walu 5 L
- Bog run S about 70 W. walu 20 ft out
- Quit again @ 6.15.

144 Fred Seckel 20817 208 5

Sept 21-1937 (15)

Herb and I get edgings at mill and
at 4-15 PM. π over Sta 4 BSN $1^{\circ}10' E$
Water lies N $72^{\circ} W$ 55 ft; S $82^{\circ}30' W$ 70
Run S $37^{\circ}25' W$ @ 100 stak. Water 40' R
@ 150 water 58' R. @ 208.5 Sta 5' R.

π over Sta 5' BSN $37^{\circ}25' E$
Water lies N $15^{\circ} W$ 70; N $30^{\circ} W$ 50
N $45^{\circ} W$ 42; S $80^{\circ} W$ 32; S $25^{\circ} W$ 62.

Run S $12^{\circ}06' E$ 151.8 To Sta 6A
@ 110 water 50 varies to $5^{\circ}30'$

π over Sta 6. BSN $12^{\circ}06' W$, Run
S $40^{\circ}10' E$ 157 To 8° Pop lies 8 ft from
water 5-30 PM. all stations on

R.R. spikes Course turned
from N-S-E as Meridian
 π on Sta 5' BSN $4-N 37^{\circ}25' E$

So Tip of Island Brs S $82^{\circ}20' W$ 300+
N. End N $79^{\circ}30' W$ about 300 ft+

Sept 28-1937 Pay Herb Kemper \$5
in full Noli: The Five left with his mother

Oct 1-1937 Try to call Seckel
10 AM. drop 20¢ in phone tell Bud to
notify Seckel "Cous will be out late today"

Reed. Eunice and I to Hack and
back to Seckel Cut brush 4 to 6 PM.
all day plotting

John W. Cuss

(16)

Oct 15th 1937

Recd Eunice and I @ Sta (3A) - 388.2
 Cut line to and East

Nov 5-1937

Recd and I to Jenkins 10-30 AM
 Martha and Eunice at home in Jenkins

Pick up Pearl and @ Sta 3A
 Town 3A - 388.2 BS N 63°55' E on (2A)

Run N 63°55' E 88.2 to Sta 300 - (4A)

Run S 63°55' W 111.11 to Sta (5A) on Lake

Run N 73°55' W @ 153 = Sta 6A

@ 160 show 15 L water 20 L

@ 175 to 200 show 10 L water 15 L

@ 250 show 35 L water 45 L

@ 300 pin

@ 290 show 60 L water 70 L

300 + 106 = 406 Sta 7-A

Still @ Sta 3A BS N 63°55' E

Sta 8A Bears S 20° E 146.5 ch

= 148 pladis pladis & coles

1 foot too much in each 100 ft

146 π @ 3A - ¹⁷Stadio

N end of 20 ft diow - marshy
S 38° E 25 ft water edge
S 47° W 50 ft: S 81° 30' W 120 S end
at water edge.

Taking overflow

S 60° E Bank 10 water 20

N 80° E 30 to 40 water E at 80 water

E at 110 solid P of land from the N.

S 79° E 115 water: S 65° E 122 water ^{on}

S 41° 15' E 150 point of land from N = water
S of side of water.

S 50° E 200 water - solid land 20' SW

S 50° E @ 150 solid land 10' R. SW

S 50° E @ 60 " " 10' R. SW

S 20° E @ 50 solid land

π over 8A 135 N 20° W

Island in River R. Tip S 37° 45' W

Left tip so 10° W

Taller Land E at 85 water 100

S 78° E 85 solid 100 water

S 50° E @ 50 show 60 water

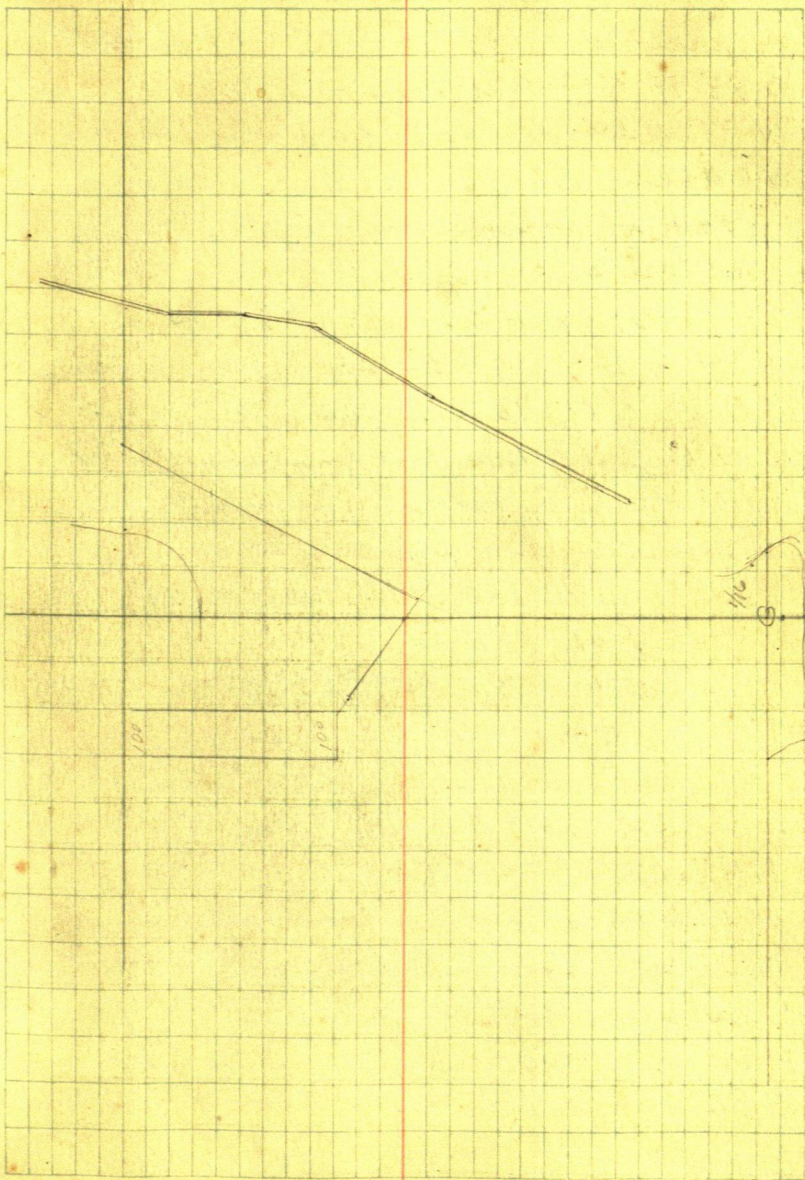
S 20° W 20 show - 35 water

S 80° W 40 stake in 75 water

N 70° W 115 "

18

147



148 Nov 5-37 cont (A) Fred Seekl

π over 5A BS N 63°55' E check
shoreline S 35°30' E 85-10 from water
S 45° W 10 shore-20 water

N 75° W 20 low shore-30 water
N 20° W @ 154' solid land @ 30 m
bay @ 50' solid land

N 69°10' W 200 to Brink 10 ft from water

π over 7A BS - S 73°55' E

S 25°15' E 85 to Brink 8 from water
S 10° E 50 - 10 from foot 20 to water
N 60° W 35 to Brink 5 from sand flat
Old Hut IX 41°33' W 164

Water edge on sand flat

S 20° E 60 S 30° W 125 N 81° W 145

Pot Hal

π over 6A BS - S 73°55' E

N 40° W 40 - 5 to water

N 3° W 65 - 5 " "

N 3°30' E 120 - 5 " "

N 5° W 170 - 5 " "

N 12° W 190 - 5 " "

N 20° W 175 - 5 " "

N 16° W 140 - 5 " "

N 23° W 105 - 5 " "

N 54° W 85 - 5 " "

N 58° W 60 - 5 " "

cont 240 pmt

Seekel

149

NOV 6-1937 Sat²⁰

Platting

NOV 7-1937 Sunday
Light rain

NOV 11-1937 - Cool - Sunshine - Martha & I T.
Pegout Tel John Nelson 10⁰⁰ - 11-30 Reedland
I L & Sanderin - Pick up Pearl - again -

Loose run + cut bank - 2:15 Coffee with
Pearl and Otto - 2-30 Beecher work Orfield
Stops by π over IM-662 E from ϕ of π 7
= ϕ Road pg 131 π over IM ϕ Road 662 E of ϕ π 7
of π 7-137-27 BS S 89°35' W Run S 74°19' E
110.5 to US B M N° 124 = 4" Pipe

π over 124 Top sea wall bears
S 55° E 115 = 5 to Post Bush 207. wall
S 42° E 110 = 5 ft from sand flat ^{307. wall}
S 22° E 90 = 5 ft from sand flat
S 7° E 115 = SW cor sand flat

S 11° E 152 S E cor sand flat 12 from wall
South 200 - Top cut bank outer

Ln 1994 From NE cor Allen track of
S 27° 24' W 10 ft Hcb ϕ Road π over
10 BS S 27° 24' W π over

Nov 11-1937-continued

S 83° E 50 walu from skin 15 bed

39° 30' E 210 walu "

S 50° E 10 walu - S 2° E 30 walu "

S 10° W 75 " S 35° W 190 - S 25° W 250

From SEC or Allen tract ch

N 27° 24' E 96.5 Hub under T

Walu N 37° W 25. - South 40° ^{SW pt of} walu in Lagoon

S 54° E 117 W Edg walu

S 61° 30' E 125 W " "

S 80° E 60 to 125 S Edg walu.

Point nearby on E - west

S 43° E 185 to Edg walu in Lagoon

Sketch line 5 ft rock

S 53° E 220 E Edg walu in Lagoon

S 72° E 205

S 81° E 220 to 280

S 88° E 310 T. 340 to Edg walu

N 89° E 400 to 450

N 73° E 460 E Edg walu

N 60° E 490 Nalu line

N 55° E 470 10 Rocks

N 51° E 450

— | — • — • —

Nov 11-1937 continued

Seekel

151

See pg 131

Town No 3 135-530°30'W

Wading lagoon WNW 50

S 37°W 35 - S 33°W 110

Cut Bank N 54°E 40 wals 10 out

E 71 15 wals 30 - S 10°W 50 wals 7 out

S 20°W 140 wals 12 out

S 14°W 310 Cut Rh 10°W wals 10 E

S 7°W 460 - wals 00. E Hi B 20 W

S 8°W 500 wals 00. E Rh 20 NW

Quit at dock Arnold loans me his 45-60
and 4 old cartridges. Pearl gives me

Address: Fred Seekel - with his daughter
Adaline - Mrs Harold Kimball ~~3476~~ 3674

Colorado Ave. St Louis Park Mpls

Mrs Axel W. Hampel 5020 - 3rd
Ave So Mpls. bot the John Allen Tract

152

Nov 12-1937

Martha and I to Geo Ellis Res. Get
30-30 and 7 shells from Dali; Dave
Ellis with George. PM. Reed, Eunice
and I or Heller R over Sta 5 P 131

2.25 PM, Take Aladia B.S. So.

N 27° E 201.8 Mouth Seckel's Pond

N 59° 30' E 301. Foot Sea Wall - Water 15^{out}

N 57° E - 230 To 262 Foot. Water 5 out

N 57° 30' E 180 Foot. Water 10 E - Low

N 74° E 130 Foot Low. Water 10 E

East 120^{Foot} Water 10 E - Low

S 73° E 137 Foot Low wall. Water 10 E

S 56° 30' E 187 - Foot Low wall - Water 10 out

S 52° 30' E 250 - Low Foot - Water 18 out

S 53° 30' E 300 Foot - Hi. Ak. Water 12 out

S 64° E 583. = Foot H. Bk 10 up Water 5^{out}

Taking Logoon

S 74° E 500⁴⁶⁵ On Dump mt 10 ft from water

S 9° 30' E 450 at water Low Bank

S 9° E 365 at water

S 18° 30' E 265 "

S 32° E 225 - Water 10 out

S 37° E 192 " 10 "

S 29° E 140 " 10 "

S 9° W 100 - " 10 "

Seekel

262
3

153

Taking Road center

E on 10. S 47° E 30 T. 207

S 40° 30' E 4 10

4-30 @ quit call on Arnold Seekel
and Otto Hauser. John Allen Pine River
has address of Lot owner

Albert Newstrom - Cross Lake
Dam watcher calls - Wants survey
made of his land in Bay Lake Twp
T 45 R. 28. See 32: viz Lots 1-2-8.

I will help him and not charge \$15 a day.
5-10 PM. Plotting:

Nov 16 - Copy deeds at Blain
In Flat Scrap Book (Al. index)

Nov 23 - 1937 Tues.

To find Soline Gov Lot 3. Pg 91-78-107

154 Fritz Seekel - Plot
April 19-1938

Arnold Seekel and Otto
Hauser calls at Jenkins 10 to
10-30 AM

Fred Seekel is back and O.K.
Has a chance to sell the Resort
and island - @ \$7,000 cash
Arnold thinks 17 to 19 acres West
to the Narrows @ Otto Seekel's Room

Prospective Buyers

Warner-Barron Motor Co
3300 Fremont Ave N Cherry 4944
Warner Filling Sta Same - Hyland 9798
"Super Super Service Str" Mpls
and the other prospective;

Hartwig Super Service Sta
"Hartwig Oil Co"?

3125 Logan Ave N. Mpls Hy 7917

Note: Hartwig knows about Warner
but Warner does not know about
Hartwig.

Arnold is to get \$3,000 cash for
his share -- says he will see that
I get my \$400 +) for Platting and
"last will" survey.

Baldrige also has a buyer. ?

Apr 19-1938 continued

Midwest Reality Inv Co 2600
Hennepin Ave Mpls Kenwood 8780

A. H. Maas - Mjr Res Re 6305

wants 5 Acres Ginseng gd @ \$100 pr
acre = \$500. I say No!

Arnold says Duff Kimball and
Adeline his wife can do anything
with Fred. Duff just started
clerking at Cross Lake Store
and that I had better see Duff
to-day. I promise to be at store @
2-PM.

Ernest Guthery has been here
all am. he cut some wood and
waited. We Lv @ 11 AM - Call on
Al Duban Book 228
Book 238

Apr 1-05 PM - Find Fred Seekel and
all the rest - Duff say go ahead.
5 Lak Plat O.K. My bill \$400, is
O.K.

156

Address

Tract owners in and adjoining
plot of Seekel Resort

John J. Allen Pine River Minn ^{Francis M.}

Arthur L.W. Johnson ^(Francis R.) St Cloud School
teacher

Lawrence White ^{Mechanic} St Cloud

Edwin G. Mc Taggart ^(Leta) supervisor
Public School of Music
Pierre S. Oak

Wallace William Ziebarth

Mrs Hilda V. Hample (Axel-dead)

5116-10 Ave. - Mpls

Wallace Wm Ziebarth Lives with

WT Ziebarth 1346 Blair St Paul

Tel Midway 9804. June 14-1938

May 7-1938 Thurs

2-45 PM. Lo Jenkins with Lynn Gerald
AKEY-17- TOVER RR. Spike 44.40 west of
SW Cor Lawrence White tract

TOVER SW Cor Lot 4 run N $11^{\circ}20'W$ set red fly
in left bank old stake bears $N6^{\circ}33'W$ 115.2
Another short stake sets 4 poles (12 ft)
Easily. SW Cor 4x4 out 140 bears
 $N 26^{\circ}38' E$ 132.10 ft

Duff Kimball gives me gas 1.91 for
\$10 cost I pay Lynn Akey \$1 in full
home @ 6:30 PM. L