

No 1

Quarter

48

RECORD

	A	B	C	D	E	F	G
Y	6	5	4	3	2	1	H
X	7	8	9	10	11	12	I
W	18	17	16	15	14	13	K
V	19	20	21	22	23	24	L
U	30	29	28	27	26	25	M
	31	32	33	34	35	36	
T	S	R	Q	P	O	N	

A. W. Moulster
Pine River, Minn.
Aug 28 - 1909

Engine 450
" " 8"
Pulleys on shaft 7 - 17.5

Elevation - Pine River
Bench Mark near Section
House, put there by
Mississippi River Commission
1799.555 feet above sea level

Sunday Record 5

Start at stake No 0.0 being a
point 5284. West
@ 1.90 Hub @ 300 at stake
marked + 300. @ 595.70 Hub
@ 600 stake @ 712.4 Hub
@ 900 stake @ 1200 stake
@ 1230.3 Hub @ 1300 Pin
@ 1565 enter open meadow
@ 1600 stake in meadow
@ 1900 " " "
@ 2075 leave meadow
@ 2196 Hub @ 2200 stake
@ 2413 Cross old road & bear
N.E. and S.W.
@ 2500 stake @ 2572.30 Hub
@ 2585 enter little slough
@ 2630 culvert in
@ 2675 cross slough
Var. changed to 8° 5'

6 Recorded

At the $\frac{1}{4}$ post between Sec. 19 and
30 - 137-29 - Goat notes call
for S 50° W at 6 WP 6 N 51° W 18th
= 11.85 ft

WP 9 - S 71° W 56 links = 36.96 ft

We found SW bearing line
standing green, plainly marked,
and stump of NW B.T. plainly
marked from which we set
the corner by ~~that~~ measurement
from the face of the B.T., after
which the trees stand as
follows, Var 8° 45' assumed
as a meridian:

WP - S 71° 22' W - 36.96 ft. to

tree in old B.T. N.T. stump

N 44° 2' W - 11.85 feet to tree

head in old B.T. - ~~full~~

Set new B.T.'s as follows

Tree head in old WP stump

Recorded

7

~~at stake~~

Bears $\eta 64^{\circ} 39' W - 19.57 ft$

Going back ~~to~~ to hub

2572.30 ^{we} chained went

~~4007~~ 100.7 feet to stake

2673 at which point

was $\frac{1}{4}$ post just at bears

$\eta 49.50$ feet

Total distance of _____ ft

Gov't chain equals _____ ft

map chain _____ ft.

Beginning $\frac{1}{4}$ post south

side of 19, 137.89 we run

west on 90° ^{at hub} ~~at $\frac{1}{4}$ post stake~~

375' old road bears $\eta 4^{\circ}$

484 hub

o

Stadia Reading = 940 ~~484~~

$940 + 484 = 1424$ to hub set 0

ft west of slough. Distance
across slough _____ ft

@ 1634 enter slough

Across narrow ridge 1/2 foot
above slough level. Plenty sand
for grading away.

@ 1635 enter south end of
slough lake. True cut is
50 feet north of south end
of slough.

~~to~~ From hub 1424 we
take cladia measure
across slough. Rod reads
~~657~~ 657 ft

@ 2081 Hub which is 90 feet
west of slough.

@ Hub 2385

@ Hub 2600 stake

@ — True Con. site

At SW Cor. 19, 137-29 Govt
 notes call for V - WP 14, N 65 E
 68 links = 44.88 ft.
 WP 18 N 37 W, 105 links = 69.30 ft.
 Apr 15 S 33 W 47 links = 31.02 "
 P 12 S 39 1/2 E 61 links = 40.26 "

We found the NW cor. N E, S E.
 B T's dead but standing
 plainly marked from which
 we set the corner by proportional
 measure from four of old
 B T's. The distance between
 NW + S E B T's are found 2 ft
 short, and after setting
 true post the trees stand
 as follows: }
 WP 14 N 64° 40' E 44.18 " }
 P 12 S 38° 45' E = 39.53 " }
 take heads down in old B T's, 845°.

10

~~@ 2614p 2m cor. at north
5.70 ft~~

Sept 27-09

11

Pine Ridge Cemetery

Set Instrument at sub-station
was set by Curo and Johnson.

Stake	at 20	Set	
"	" 24	alley	
"	" 44	Set	
"	" 54	alley	10 ft
"	" 74	Set	
"	" 78	alley	
"	" 98	Set	
"	" 108	alley	
"	" 128	Set	
"	" 132	alley	4 ft
"	" 152	Set	20
"	" 162	alley	10
"	" 182	Set	20
"	" 186	alley	4
"	" 206	Set	20
"	" 216	alley	10
"	" 236	Set	20
"	" 240	alley	4

" 260 Sot 20
 " 270 Alley 10
 " 290 Sot 20
 " 294 Alley 4
 " 314 Sot 20
 " 318 Alley 4
 " 338 Sot 20

second Hub at 0.

dit at 20 Sot 20 ✓
 " " 24 Alley 4 ✓
 " " 44 Sot 20 ✓
 " " 54 Alley 10 ✓
 " " 74 Sot 20 ✓
 " " 78 Alley 4 ✓
 " " 98 Sot 20 ✓
 " 108 Alley 10 ✓
 " 128 Sot 20 ✓
 " 132 Alley 4 ✓
 " 152 Sot 20 ✓

"	162	alley	10	✓
"	182	lot	20	✓
"	186	alley	4	✓
"	206	lot	20	✓
"	216	alley	10	✓
"	236	lot	20	✓
"	240	alley	4	✓
"	260	lot	20	✓
"	270	alley	10	✓
"	290	lot	20	✓
" 240	294	alley	4	✓
" 260	314	lot	20	✓
" 264	318	alley	4	✓
" 284	338	lot	20	✓

14

3rd

bet at	20	Sot	✓	20
"	24	alley	✓	4
"	44	Sot		20 ✓
"	54	alley (bank)		✓
"	74	Sot		✓
"	78	alley		✓
"	98	Sot		✓
"	108	alley		✓
"	128	Sot		✓
"	132	alley		✓
"	152	Sot		✓
"	162	alley		✓
"	182	Sot		✓
"	186	alley		✓
	206	Sot		✓
	216	alley		✓
	236	Sot		✓
	240	alley		✓
	260	Sot		✓
	270	alley		✓

	290 Lot	20	✓
240	294 Alley	4	✓
260	314 Lot	20	✓
264	318 Alley	4	✓
284	338 Lot	20	✓

4th

set	20 Lot	✓
"	24 Alley	✓
"	44 Lot	✓
"	54 Alley	Yack ✓
"	74 Lot	✓
"	78 Alley	✓
	98 Lot	✓
	108 Alley	✓
	128 Lot	✓
	132 Alley	✓
	152 Lot	✓
	162 Alley	✓

	182 Lot	✓
	186 alley	✓
	206 Lot	✓
	216 alley	✓
	236 Lot	✓
	240 alley	✓
	260 Lot	✓
	270 alley	✓
	290 Lot	✓
240	294 alley	✓
260	314 Lot	✓
264	318 alley	✓
284	338 Lot	✓

lit 20 sot
24 alley
44 sot
54 alley (Sot)
74 sot
78 alley
98 sot
108 alley
128 sot
132 alley
152 sot
162 alley
182 sot
186 alley
206 sot
216 alley
236 sot
240 alley
260 sot

18

	270	alley
	290	Sat
240	294	alley
260	314	Sat
264	318	alley
284	338	Sat

~~Fr + 5 - Wednesday, Sept 6 - 09
- Balance Sept 7 - 09~~



20

Bureau - Jan. 17 - 10

With Alford - 137 - 31

17 - 18 - 1913,

Thursday Feb -

Went to Walker in
afternoon, served as

deputy sheriff on

McDonald - Weston again

Friday morning came
to Hookinsack.

Saturday afternoon

at Meander corner to

32 - 140 - 30.

$$\begin{array}{r} 28\frac{1}{2} \\ 66 \\ \hline 1710 \\ 1710 \\ \hline 188.1066 \\ .80 \\ \hline 52.80 \end{array}$$

253

Tuesday - Feb. 8 - 10

Survey of road - Harbor
east to Whitefish Lake.T. No 140 N., R. No 30 W. 5th N.

Started at 1/4 point between

19+20. Found Hub

that curve as follows

N.P. Stamp - 56 PW - 70

Set new B.P. as follows -

- 42

66

252

252

27.72

$$\begin{array}{r} 600 \\ 172.10 \\ \hline \end{array}$$

$$472.10$$

$$.75$$

$$\begin{array}{r} 236050 \\ 377680 \\ \hline \end{array}$$

$$\begin{array}{r} 401.2850 \\ 26407 \\ \hline \end{array} \quad .1519$$

$$\begin{array}{r} 134215 \\ 132035 \\ \hline \end{array}$$

$$\begin{array}{r} 51800 \\ 26407 \\ \hline \end{array}$$

$$\begin{array}{r} 253930 \\ 237663 \\ \hline \end{array}$$

253

$$620.75$$

$$1359.15$$

$$620.75$$

24

I
T. 140-30 Tuesday
Hockensack - Feb. 8-10

- 300 Stake
600 Stake
746.40 Hat -
900 Stake
1060 Enter slough
1180 Seam down
1200 South wheel track
- Pin, Road bearing E + W.
1299.50 Hat in WP Log.
1320 Stake - Strip $\frac{1}{16}$
1340 Enter open meadows
1620 Pin
1920 "
2220 "
2480 Creek C - SE NW
2520 Pin.
2640 "

Sec. 19 -

2640

29.80 **25**

140 - 302669.80

2640 + 29.80 = 2669.80

Cash in adlog - H.C.

Wednesday ^{29.80} Curo, Sukerian and
Jailay - Cortelle in afternoon

2
5
1
25

40 ^{Measuring} Lorry West - from road
Enter Hainworth ^{land}

300 Pin

600 "

900 "

253

1200 "

1320 "

1320.15 Dick in Hain - logs

1490 Leave Hain - heavy

1559.15 Hubs

1620 Pin

1907 C. main Road N+S

1920 Pin

2220 Pin

T. 140-30 - 5th Rm

Harkey's - 4th R-10.

K + F. Summit - 300 ft.

Chicago steel legs - 57 ft.

Shoulder - - - - -

P. B. Barrett, Curio and 3

Summit and Hammer.

Summit - - - - -

Beginning at the $\frac{1}{4}$ Post

between Sec. 19 + 20, South

note call for, Sec 19 + 20,

Norway P. 10 S. 68° W.,

80 links, = 52.80 feet

N. P. 10 S 27° E. 275 links =

188.10 feet

We find a hub and tail at

for the large $\frac{1}{4}$ corner as

established by Curio, County

Survey set down both old

and new. At this time

the S. E. P. is gone, having

been burned by forest fire.

We find the station

S. W. 10 S. 68° W. 52.80 feet,

from which we test the

corner set by Curio and

find it to be correct.

Setting transition hub,

above mentioned, a tail

on the face of the old B. T. link

bears S. 68° W. 52.80 feet.

We find a new bearing point

set by Curio - being a tail in a

20 inch N. P. link, bears

S 100° 34' E, 30.73 feet

140 - 30 Dec 19

27

We establish a new B.T. ~~at~~ being a ~~jack~~ ~~line~~ 4 in.
 bearing N. 47° 58' W. 47.96 ft
 to tack head. We marked
 the line "1/45 New B.T."
 These courses are turned
 from true meridian,
 Dec. being 8° 46' at the time.
 With current set on 1/4
 port - east side 19, we
 back sighted along east
 boundary, N E 1/4 and
 run south.

253

300 Pin

250

600 "

746.40 Hub.

900 Pin.

1060 Enter slough

1180 Leave slough

1200 Point to south wheel
back on a bearing E + W

1299.50 Jack in W.P. Log

1320 Make - $\frac{1}{16}$

1340 Enter open meadow

1620 Pin

1920 "

2220 "

2460 Creek C - Bearing E + NW

2520 Pin

2640 "

2640 + 29.70 = 2669.70 - Jack
in pole hub - south center

28

3

Sec 19 - 140 - 30

We find S.E. C. of 19, which
was previously set by Curs, H. H. D. F.
feeling it we find it correct.
He had set new bearings as
follow

Tam. stump 3 - NE 170 feet.

Tam. stump 3 - NW 8.25 feet.

To talk

1 - about B.T. stands plainly
marked -

Tam. 5 - S. 47° W - 42 links =

2772 feet to talk head knee

in B.T. marks, courses

turned from true meridian

at $8^{\circ} 46'$ Var.

We placed a new Tam.

post 3" X 3" X 60' for a corner

post - marked - 19, 20, 29, 30.

Out for the night

253

Wed. - 2-9-10 -

Hambrecht - 140-30

sorted, Subers, Curs + J.

Done Soles - Plum-bobbin.

W.C. Hules.

We test line of east boundary

Sec. 19 - Set transit at

1/4 post, east side, then back sight

to flag on N.E. Cor. We find

the line run straight.

See 19 - 140 - 30 29

At a point 2660.4 feet
south of the $\frac{1}{4}$ point, the
line S. E. corner of 19
sets west $29\frac{1}{2}$ feet.
Following transect on SE
Cor of 19, 140 - 30, we
run west through swamp,
90 Var.

300 Pin
600 "
900 "
1220 " 253.1
1320 "
1320.5 Sub in tang log.
1490 Same line, swamp
1559.15 Hub
1620 Pin
1907 Road C - N. + S.
1920 Pin
2220 "
quit for night.

Thursday - 2 - 10 - 10

2520 Pin
 $2520 + 81.3 = 2601.3$
Dive $\frac{1}{4}$ cor. sets south
4.80 feet.

30 Dec. 19-140-30

East Line

~~Angle of SE. cor. 19 = 89° 43'~~

$2640 + 20.45 = 2660.45' =$ south

half mile on east line of 19.

True cor. is $29.12'$

at $2660.45'$ we take

angle of east and south
line = $89^{\circ} 44'$.

Above angle taken from
east random line and
south true line.

253

Wed-3-16-10

Suber, Curw and I
started at $\frac{1}{4}$ cor - south
line of 19-140-30
and run north.

Var 9°

We ran into timber
and building so we
changed line run

Dec. 19 - 140 - 30. 31

on 8015'

Thurs. 17th

Continued since

Friday 18th

Starting at 1400

south side of Dec 19 -
we chained north.

300 Pin

495.85 Pin hub on hill.

600 "

900 "

1200 " 253

1500 "

1691.08 Hub

1800 Pin

2100 "

2400 "

2500 "

2640 Center of Creek

2700 Iron spike

2943.22 Jack in the, main line.

3000 Pin

32 Dec. 19 - 140 - 20

3300 Pine

3600 " 253

3900 "

4048 Sap in hub.

4180 Enter open bog.

4200 Pine in bog.

4390 Severe bog

4500 Pine

4700.40 Sap in hub on hill

4800 Pine in W. bank of track

4840 Track Center

5073.75 Sap in stump on hill

5100 Pine

5280 "

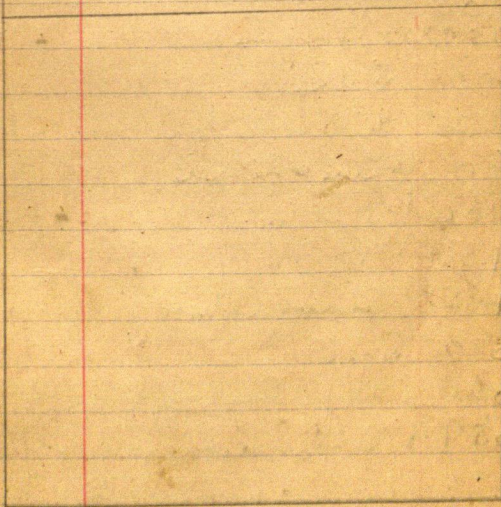
5280 + 70 limbs - 5326.20 ft.

= set on north side of
road, thence west 90°

120.25 ft. to center of
R.R. track.

33

253



34

1897 .253

Starting at 1/4 cor. east side - ^{chaining} north

272	Pin
472.10	Sub
474	Pin
500	"
800	"
1100	"
1250.50	Jack-in-hub
1400	Pin
1462	Enter tube
1500	Pin on ee
1800	P " "
2100	P " "
2195	Leave tube
2300	Pin
2600	" in way
2639.9	Cor. 11-18-19-20

36

Island Lake

Dec. 14 - 140 - 27

South Boundary

Shore. August 7 1910

R. M. Curro - Mr. Snell, McKay,

Capt. Watson, Mark Snell + 5

Setting on S E Cor. of 14 which sets in also

140-27 in run west on

70° 45' Var.

300 Pm

600 ..

900 ..

1100 Seam open by

1169.85 Stub on bench

1200 Pm

1225 enter lull bog

1500 stake in bog

1510 leave "

1664.50 Stub on bench

1737 stake 2 ft east of lull

1740 enter lake (could not find)

at 1675 - in set stake and
 get distance across lake
 by tying 2 chains together
 one = 300 + a 200 ft

2120.02 Seam lake end set

Pm

2420.02 Pm

2420.03 + 220 = 2640

South Boundary
Sec. 14 - 140 - 27

No BTE

2628.4	Hut in field	
2640	Hut. Feary 1/4 cor	
2900	Same field	
2940	Pine	P.M.
3130	Enter pine bog	McKay,
3240	Pine in bog	Capt. Withers,
3540	" " "	Mark Snell,
3840	" " "	and 2
4140	" " "	continued
4220	Scare bog	same.
4315.50	Hut	see and
4440	Pine	to Snell and
4740	"	other work
4705.90	Hut	paper
5040	Pine	7030'
5240	"	
5240 + 99.6		- 5339.6

at 5339.6 In SW cor of
 Sec 14 - ~~140~~ 140 - 27, sec
 south 95.35 ft.
 Quit for night.

38 Sec 14-140-27

South Boundary.

Friday April 8 1910 A.M.

Collecting

5339.6 SW Cor sits south
95.35 ft. 29.8

2640 we chain west to Hub

2669.8 - thence south 47.67 ft
and set true 1/4 cor.

with B.T.s as follows

A rock as witness cor. south

2 feet across on rock

(Mark Snell - Capt. Johnson,
Mil. Eng.)

North & South Center Line.

Setting on true 1/4 - south end

14 we run north on

80 Var.

273.45 - Hub

300 Pin 500 center bog

600 " in bog

900 " " "

1200 " " "

1450 Iron bog

1500 Pin in old bog

1500.8 Jackson " "

1800 Pin

2100 "

See 14-140-27

39

2269.85 Hub. P.M.

2400 Pin

2603 - East & W. survey line

2654.65 Hub on north side

7 cut out road.

We then quit above line

West Boundary

Sitting on June 14 corner

we run North by back

sighting on a correlated

hub set by Cuss.

1000 leave sled

128.95 Hub on Hub

250 Enter hill side

300 Pin in sled

330 leave sled

600 Pin

854.05 Hub

900 Pin in log.

1200 Hub

1491.5 Pin

Saturday April 9-10

Work sled - cont. Dickerson

Site May 1st

Continuing West boundary

1800 Pin

1969.55 Hub

2100 Pin

2400 "

At 2640 June N.W. corner

See 14 - sets North 4.5 feet

+ west 1.22 feet

40

Dec. 11 - 140 - 27

North Boundary

April - 9 - 1910 P.M.

Mark Small, Pety McKay

Costa W. Choo and S.

Putting on N.E. Line Cor. of

11 which was previously set
by Curo, we now went on
7-50 Var.

213.7 Hub on ridge 20 feet
east of little slew.

300 P.M. leave slew.

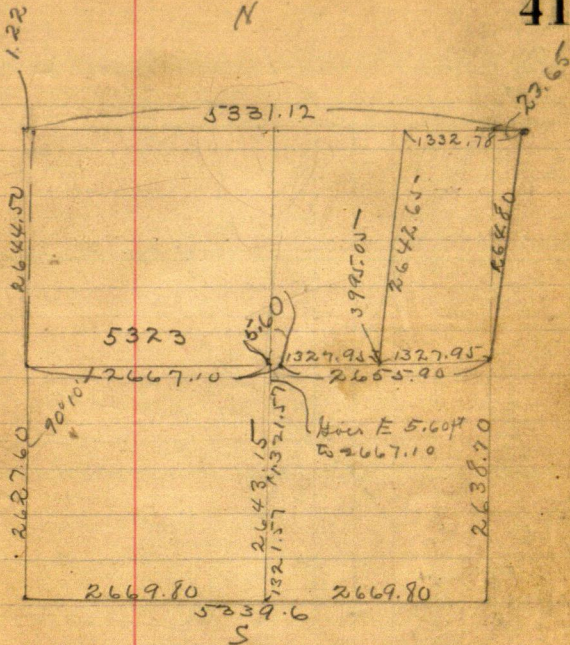
600 P.M.

873.50 Hub on Bench

900 P.M.

Out for night.

N



Sec. 14 - 140-27

Lat

Remarks

4/1

Out

Elevation made

W. F.
Instrument

Rob.
Reading

Station

0 = Water level 7.28 7.28

1

Station	H. I.	+s	-s	T. P.	Remarks
0	7.28	7.28	98	6.30	0 - Water level
1	14.42	8.12	132	13.10	
2	20.97	7.87	143.5	19.53.5	
3	26.60.5	7.07.5	4.15	26.19	
4	32.45.5	6.26.5	3.10	29.35.5	A. J. Well

Snell's Well

Sunday April - 10 - 1910

Dec. 11 + 140 - 27

North Boundary.

April - 11 - 10 - a.m.

Capt. Withrow, Mark Snell

Alice Whitted, Bill Caley & S.

Continuing from Pin 900
which we left Saturday.

1100 Pin

1204.05 Hub

1300 Pin

1500 "

1700 "

1761.78 Hub

1900 Pin

2100 "

2280.55 Hub

2300 Pin

2500 "

Ate dinner at Alice Whitted's

digging ~~was~~ hole where old
post was ^{80 ft} - old stumps stored
as follows

M 705. 6.9 ft - old stump

Gov. notes call for Red Oak
8 N 70 E 10 lbs - 6.6 ft.

(2) Gov. notes call for
Red oak 6' S 71 W. 42 lbs = 27.72
blump stands - S 71 W - 17.3

2640	Hub	2940 P
2700	Pin	3100
2833.85	Hub	
2900	Pin	
2910	Enter small screw	
2940	Pin in screw	
3100	leave screw	
3140	Pin	3500
3250.87	Hub	3700
3340	Pin	
3440	Enter N edge of Dry Brush Swamp	
3540	Pin	
3740	"	
3940	"	
4140	Pin	
4160	leave Dry Brush Swamp	
4305.50	Hub	
4340	Pin	
4540	"	
4579.50	Hub	

46

4740 *Pin*

4940 "

5122.6 *Hub*

" *cut for night*

Dec. 12 - 140 - 27

Sunday, April 12 - 1900.

So started the NW corner of

140-26 - 5 outcrops an old

random line near by Cur,

and copy his notes which read
as follows:

Set in C No 5 - 140 - 27
and walked around to south
side of Sulby Lake, and worked
Narentor line at 80 bar. and
then south, measuring
from a stake marked 0.0,
at the water's edge.

40	Hub
100	Stake
400	
425	7" big hill
513	Hub on high hill
600	Foot of hill
700	slate on side hill
867.10	Hub on highest hill
1000	stake
1100	10 up ravine bears E+W
1200	slate on hogback E+W
1364.80	Hub
at	crossed stage road E+W
1500	stake
1570.80	Hub, Temp NE Cor 12
	ATs were gone
	Continue South
1665.70	Hub on hill
1700	stake

48

12-140-27

2000 stake

2300 "

2468.20 Hubs

2575 2nd big hub

2600 stake side hill

2748.50 Hubs, north brow of hill

2800 ^{stake} ~~stake~~ ^{stake} ~~stake~~ this line will

work further down when we
will put in the M.F. Co.

12-140-27 "

H + B Transit, 200 ft. Chicago
Steel Pipe.

Capt. Withers, also Whittet, Wm Casey,
amen.

marks well and 3 chainmen
Transitman - Moulton

Setting Transit on Curve

hub no 2748.50 - 5 back sight

on MC no 5, 140-27 on

north side of hill and

run south, measuring

from stake no 2800.

Slope for 4 in. at 4210.80
W. Subh S 85 E 6.11" = 3.96 ft
Angle S 30 W 10" = 6.6 "

- 3000 Pine
 3100.15 - Hub on hill
 3200 Stake south side of hill
 3400 Pine in valley
 3600 Stake
~~3776 - Hub on small hill~~
 3750 Pine on side of small hill
 3776 Hub on small hill
 3950 Stake on side of small hill
 4000 Pine " " " "
 4200 " on hill " " "

50

Sec 6 - 140 - 26

April 12 - 10 5 m.

Hill drill, Calumet to
Cor 5-6-7-8 use net cor.

How. notes call for

Jam 3 N 14 W - 12 lbs = 7.92 ft

" 5 N 7 E 13 " = 8.58 "

" 4 S 34 E 23 " = 15.18 "

Setting Cor by prop. measurement

B T's ^{stand} ~~stand~~ as follows 80 Va

Hill Jam 4 N 14 E 8.58 ft

" " shup 3 N 35 W 10.7 "

" " butt 4 S 49 E 20.7 "

Setting on Cor ^{use} and run
north on 80 Va

300 Pin

406.30 ft in stage road -

E + W

Sec. 6 - 140-26

51

South Boundary

Wed. April - 13 - '10. a.m.
Capt. Withrow, made well, also
whitewash, ~~at~~ Carey and J.

Setting on SW cor 6 we
~~run~~ ^{lost} by turning a 90°
angle from True Range line
8°38' Var

We set new bearings as
follow Bunk 2½ S 40°34'E
24.35 ft

Bunk 4 S 46°40' W 58.00 ft

~~Mend~~ Taken from Range
line as True Mendocino
which is 8°30' Mag. Var.

200	Pin in valley
400	" on side hill
600	" " hill "
800	" " hill "
886.85	Nub on hill
1000	Pin on ^{lost} side of hill

140-26

MC No 39 - west side of Lake -

Ck 9 N 86 W 12 -

MC No 38 - East side -

N. 20 S 80 E 5

Buck 9 N 21 W 15

Distance across Lake - 28.80

Distance from Sec Co to $\frac{1}{16}$ Sec

= 18.56 ch.

Distance from MC 38 to Sec Co

= 16.50 ch.

1200 P.m. in valley

1400 " on hill

1587.5 " hut " "

1600 P.m. " " "

We then quit line on account of
the fire and smoke and
went to

Cor. 5-6-7-8, walked
north to our old hut No 406.30
and continued our line
north - ending ~~406.30~~

~~and~~

Sec. 6 - 140-26

53

East Boundary.

600	Pin south edge of small slew
700	north edge of same slew
800	Pin on small ridge
875	Hubs alder
900	inter-swing
1000	pin in "
1200	" " "
1300	stake " "

54

Sec. 6 - 140-26

South Boundary.

Thurs April 14 - 1910. A.M.

Mark Snell - Wm Carey & J.

We went on top of hill and worked transit in line between Sec. Cor. and MC No 38. Cutting line each way we set a number of good ^{with stakes} hubs, ~~not~~ marking center on one side and "True Line" on other side.

Putting hub No 1587.50 over on True line by ^a right angle, we began chaining from it

1600	Stake	P.M. Mark Snell Cop. Watson and J
1710	enter slew	
1800	Run in slew	
2000	" "	
2085	leave slew	
2147.25	Hub on Sea Wall	
2179	Water edge - east west side of Cape Stake	

We then went across lot to MC No 38, ~~across~~ and back sighted to a mark right ^{at} which we had placed on high hill and continued line east.

0.0 met. 38

54.45 Jackson string
 195 Cross road - SE NW
 200 Pin
 400 "
 600 "
 685.50 Hub on ridge
 800 Pin - west edge of swamp
 1000 " in swamp
 at 1068.25 feet SE cor of 6 sets
 south 22.4 ft.
We then quit here.

Friday April 15 - 10

Wm Snell, Curd + S.
 Road with Snell to Bass Lake.
 Rained in forenoon, we
 stayed in Barber's house.
 Wm Snell made cranberry pit
 or afternoons - we run
 some head line along
 Blooms fence.
 Quit and went to see Snell's
 place - arrived at 6:30.

Saturday April - 16 - 10.

Curd - Wm Snell and I worked
 on Bass Lake road all day.
 Alie Whitted and Mark Snell
 worked in afternoon.

56

Sec. 14-140-27

North and south center
line of N. E. Quarter

Sunday, April 17-1910

Alec Whitted and I.

Meeting on 1/16 cor, south side of
the N. E. Quarter 14, which
was previously set by Curs, we
run north on 8° Var.

200	Pine leave swamp
322.70	Hub
400	"
600	"
785.40	Hub
800	Pine dry
850	enter swamp
1000	Pine in swamp
1050	leave swamp
1197.75	Foot in old log
1250	Pine
1400	"

230 P.M.

Mark Inell + Wm Carey came
to help us, ~~then~~ as they were there
at ~~the~~ Lake

1600	Pine
1775	enter small and steep
1800	Pine in place
1840	leave steep

1997.6 Hub
2000 Pin
2200 "
2400 "
2511.60 Hub
2600 Pin

25.9

57

at 2642.65 - June 16 sets
West 25.9 feet ^{and} about 2 1/2
feet south of Curio's east and
west random pins.

on 80 Kar. set new bearings
as follows:

Five pins Pin N 87 1/2° W 150.6 ft

Three pins N 45 08' E 109.75 ft

for cor. set an oak post
3 1/2 x 3 1/2 x 30.

Quit for day.

58

Curo's Random Line

Sec. Cor

2511.60 Hub

2.5

25.91

True line

24.65

Sec. 14-140-27

Corrections for
north-south center line of
north-east quarter.

1997.60 Hub

2

19.6

1197.75 Tack
in old log

True 1/6 line

Random line

11.7

785.40 HUB

7.7

322.70 HUB

2.78

East & West Center Line of Section

Sec. Cor

575- 5712.6
 42.24 4579.50
 59.9 (4305.72)
 30.13 3250.87
 26.26 (2833.85)
 71.13 2880.55
 16.3 (1761.78)
 11.35 1204.05
 8.1 (873.501)
 1.9 210.7

Sec. 11 - 140 - 27 - North Boundary

at 5125 June NW cor
 11 sets south 47.5 feet }

Sec. 12 - 140-27

West Boundary

Monday April 18 - 1910

Cours notes, random line
reads as follows -Sary at SW cor sec 12, run
north 10° E or.

730.50	Hub
800	cross steep road E+W
1200	stake
1241.60	Hub
1320	Hub
1385	enter slaw
1914.50	Hub
2000	stake
2444.10	Hub
3167.30	Hub
3706.30	Hub on little hill
3960	Hub
4305.50	Hub
4778.20	Hub
5138.20	Hub
5278	Line NW cor of 12 sets
east 40.90 feet	

62

Sec. 12-140-27

West Boundary

Corrections

~~5138.20~~ out coast

4778.20	"	"	37.03	
4305.50	"	"	33.36	
3960	"	"	30.69	28.7
3706.30	"	"		
3167.30	"	"	24.55	
2444.10	"	"	18.94	
1914.50	"	"	14.84	
1320	"	"		
1241.60	"	"	9.62	
730.50	"	"	5.66	

Dec. 12 - 140 - 27

North Boundary

Curves along random line
reads as follows:Beg. at N.W. corner of
east, 7° 15' var.

904.30 Hub on little hill
 1078.90 Hub
 1307.70 Hub
 1734.80 Hub
 1939.90 Hub
 2418.50 Hub = big hill
 2684.80 Hub
 3365.90 Hub
 3661.20 Hub
 3878.40 Hub
 3921.60 Hub
 4897.70 Hub
 5259.90 Hub
 5313.00 Hub
 5358.50 Due N E cor 12, sets
 south 137.61 feet

conversion from

5313	sets south	136.4
5259.90	" "	125.76
4897.80	" "	
3921.60	" "	99.6
3878.40	" "	
3661.20	" "	86.4
3365.90	" "	
2684.80	" "	62.1
2418.50	" "	
1939.90	" "	44.54
1734.80	" "	
1078.90	" "	
904.30	" "	23.20

Monday, April 18-10

Mark Snell. Dec whitted
and 5,

Starting at Newcomer 11-14027
we covered the North
Boundary Dec 11,
North boundary Dec 12,
West Boundary Dec 12,
N + S. Center line of NE $\frac{1}{4}$
Dec 14.

We then quit for day.

Notes

April 6 - coming
19 - going

140-

48
16
30
24

118

267
24

2667

267
24

2667

Tuesday, April 19,
Went home

John J

66

139-25

Thursday April 21-10.

Left Pipe River at 7:30 a.m.

Rode with Fred to Emily.

Hired team at Emily and
came to Smeetham.

Sivering from Emily to m. \$3.00

Dinner at Emily .25

Friday April 22-10

J. H. Neacham ^{and team} Dave
Stratton and J.

Dave Stratton - chairman

H. + B. Sargent.

200 foot Chicago Steel Rope
Plink bob line.

139-25-

67

Sec. 22

West Boundary

Corner to south $\frac{1}{2}$ mile on west side of section. Curved old side.

$\frac{1}{4}$ post sets east 116.1 feet

Length of line - 2619 feet

Hubs

2289 sets east 101.6 feet

1669 " " = 73.9

1028 " " = 45.5

South Line of Sec 21.

SE cor sets north 57.1 feet

Length of South Line ^{97.0} 5397.6

4995 sets north 52.7

3398 " " 35.9

2878 " " 30.4

2225 " " 23.5

893 " " 9.4

Sec. 22.

E and W Center Line

68

139-25

3100 Curio old stake
 3300 Pin
 3369 Jack in old log
 3500 Pin
 3600 "

Saturday April-23-10
 S. Meadham, Ward Stratton,
 Roy Stratton and 3,
 continuing yesterday's slew.

3800 Pin
 3846 Hub
 4000 stake
 4068.1 Jack in Birch log
 4200 Pin
 4400 "
 4464.7 Jack in old log.
 4600 Pin
 4700 enter slew
 4800 pin in slew
 5000 " - leave slew
 5175 $\frac{1}{4}$ cor. east side
 22 sets south 74.9 feet

Dinner at W^{ms} Stratton

1320	Wedge sets south	19.1
1927	" " "	27.9
2267	" " "	32.85
2839	" " "	41.14
3100	" " "	44.9
3846	" " "	55.76
44647	" " "	64.9

$\frac{1}{16}$ cor - east $\frac{1}{2}$ of center line

1320 - sets west 26.25 feet and south 18.75

1293.75

Weather well to

$\frac{1}{4}$ post - south line
of section 21 - 139 - 25

at 2640 $\frac{1}{4}$ post sets
east 58.8 feet and
north 28.55 feet

Set a $3\frac{1}{2} \times 3\frac{1}{2} \times 2$ foot
post with bearings as
follows

Head angle 7 M $34^{\circ} 3'$ E 37.80 ft

WP9 $N 57^{\circ} 25'$ W 76.15 ft

Out for day
- snowed

Sunday April 24-10.

Didn't work. In afternoon
went fishing at a place
between Lake Morrison and
Lake Serot.

139-26

Monday April 25-10.

S. H. Meacham, D. Meacham,
David Stratton, S. Alder and J.
Left S. H. Meacham's house at 9:00
A. M. and went to the Crooked Lake
narrows, arrived at 10:15. No boat
was with when we arrived.
Crossed at 11:15 A. M.

P. M.

Wm Robinson

Sec 27-139-26

North and south center line
of east $\frac{1}{2}$ sec. or the $\frac{1}{16}$
line. Containing road
survey of Curio's.

Setting on Hubs No 1320 (1/16 in)
 continued Curio line
 north.

1200	Curio red stripe
1400	Pin
1530.8	Hubs
1600	Pin
1800	"
2000	"
2200	"
2222.2	Hubs
2400	Pin
2572.6	Hubs on hog back
2600	Pin - enter small round alew
2725	leave slow
2800	Pin west 10.
3000	" on side of hill.
3200	" on west side of hill.
3350	enter small swamp
3400	Pin in swamp
3450	leave swamp
3484.6	Hubs on hog back
3500	enter swamp
3600	pin in swamp
3800	" " "
3850	leave swamp
4000	Pin
4024.9	Hubs on hog back
4075	Enter swamp
4200	Pin in swamp

Quit for day

— Monester

72

Dec. 27-139-26

Tuesday April 26-10

w/ Robinson, David Stratton,
So. Olds, Severe Merchant and
J.

Continuing yesterday's line.

4300 leave swamp.
4400 Pin
4476.80 Hub
4600 Pin
4800 "
4846 Hub
5000 Pin enter swamp
5200 " leave "
5209.6 Hub
5348.3 Small hut in center of

Curo's east and west line.

We then walked west on Curo's old
line on north side of 27 to ^{Hub} 2646
and looked for B.T.'s for $\frac{1}{4}$ cor.
couldn't find any.

Walked on to cor. ^{about} 21-22-27-
28 and ate dinner at
Curo's Hub No. 5300.

After dinner we hunted
for B.T.'s. Found old W.P.
Hub - 30 with a current
mark - b. 21. and a
2 1/2 x 2 1/2 inch stake - rotten

Bottom inverted on 27

marked - 21-22-27-28. 73
 setting transit on strike
 measurement held out to
 old rotten stumps within
 2 or a foot and courses
 held within 5 minutes.
 with 80 25' Var. 3 run
 west.

200 Pin
 400 "
 600 "
 800 "
 862.20 Hub
 1000 Pin
 1200 " in stumps.

Sec. 28-159-26
North Boundary

cut for 2nd month

Sec. 28 - 139-26.
 North Boundary.
 Wednesday April 27 - 1910.
 B. Meahan, Wm Robinson,
 Joe Ellis, David Stratton and J

Continuing yesterday line.

1400 Pin enter and set
 1500 leave stw
 1600 Pin
 1686.70 Hub
 1760 Enter stw
 1800 Pin in stw
 1900 leave stw
 2000 Pin
 2200 "
 2400 "

1/4 Cor. No. 28-139-26
 Foot notes call for, W to V at 4
 WP 18 N 69 E 21 lbs = 13.86 feet
 WP 36 S 9 W 34 " = 22.44 "

Could not find BT's. Hunted within
 a radius of 500 feet or more.
 Country has been burned over, stumps
 being badly burned.

2557.1	Hub
2600	Pin
2640	Hub
2800	Pin
2990	Cross Grand Rapids + Branard road - north and south.
3170	Pin
3200	"
3245.30	Hub
3400	Pin
3600	"
3800	"

Quit for day.
 — Snowed

Dec. 28-139-26

75

Thursday April 28-10

Wm. Robinson, Land Station,
Severe meadow, Soc. Olds + S,
Continuing yesterday's line.

4000	Pin
4142.70	Hut
4200	Pin
4400	"
4511.20	Hut
4600	Pin
4700	enter small sliver
4800	Pin in sliver
4850	leave sliver
4993.6	Hut on hogback
5000	Pin
5200	"
52	Hut.

Cor. 20-21-28-29 - 139-26

Gov. rolls call for

NP 20	N 45 E	100 ft	=	66
NP 20	N 8 W	106 ft	=	69.96
NP 20	S 30 E	130 "	=	85.80
NP 30	S 60 W	35 "	=	23.10

After hunting several hours for
the ~~NP~~ ~~NP~~'s we quit up finding them.
Stumps all badly burned.
No stumps would check out
to standard every stump
within a radius of 700 feet.

We then walked back to the NE
Cor 28 - Cor. 21-22-27-28
and run south - 7° 40' or

200	Pin
400	"

600 Pin
 700 enter small slus
 800 Pin in slus
 900 Leave slus

Quit for day.

- Mouldster

Dec. 28- 139-26 East Boundary

Friday April 29-10.

Have Stratton, Wm Robinson,
 Joe Olds, Steve Macken and J.
 continuing yesterday line.

1000 Pin
 1163.4 Hub
 1200 Pin
 1400 Pin
 1600 Pin
 1700 Pin
 2000 Pin
 2200 Pin
 2367.6 Hub
 2400 Pin
 2600 "

at ^{about} 2635.0 Turn 1/4 cor sets out

34 feet. (Stumps in line for
 correct measurement)

Found B.T.'s badly burned but
 plainly marked.

Set a $3\frac{1}{2} \times 3\frac{1}{2} \times 2\frac{1}{2}$ post by
 flat measurement.

B.T.'s then stood as follows

1/4 corner Monday 28.

WP 20 S 67 E 60 lbs = 39.60 feet
 WP 28 West 9 " = 5.94 feet

WP 30 S 73 W - 5.94 feet

WP 24 S 67 20' E 39.60 feet
 80 lbs

Set new bearings as follows
 marked new B.T.

Sub 5 S 125 1' W 15.6 feet

Sub 4 S 80 E 16.8 "

Then took the crew to the
 north boundary by 27.

Setting on Curo's hole no 5300
 3 runs west by backsighting on
 Curo's hole no —

5500 P in

5700 "

at 5715.5 feet cor 21-22-27-28

sets about 113.75 feet

Set a 3 1/2 x 3 1/2 x 2 1/2 feet marked
 21-22-27-28.

old B.T. set as follows

WP sub 24 N 54 W 4 feet

Set new B.T.'s as follows

WP 24 S 155 5' E 75.75 feet

Sub

78

WP ^{stake} 24 N 81 E 38.2 feet
 WP ^{stake} 90 S 45° 45' W 95.8 feet
 Var 7° 40' ~~45'~~

Set 1/4 post north end
 of line 27
 at corner of line no 27 19.4 ft
 sets west 138.35 feet and
 south 56.775 feet

Found B B B's stake, bottom
 rotted away in line, 9 ft. ~~set~~
 100 feet north.

Set new BT's as follows

Bush ^{stake} S 51° 45' E 19.85 feet
 WP ^{stake} 12 N 70° 19' W 10.30 feet
 7° 40' Var

Out for day.
 -Maudslayi

2719.4
 138.35
 2857.75

Sec. 27 - 139 - 26.

79

Saturday April 30 - 1910.

Survey made by, Geo. A. S.,
Wm. B. Johnson, David Johnston
and S.

$\frac{1}{16}$ post sets 1428.875 feet
west of east sec. cor., and sets
south 28.4375 feet.

bits east of curv stakes 1500 -
71.125 feet.

Said a post marked $\frac{1}{16}$ S, with
bearings as follows, 80 Va.

Poplar 8 N 23° 18' E 57.70 feet
Oak 8 S 70° 44' W 36.25 feet.

Corruling east from $\frac{1}{16}$ post
which sets south 28.44 feet

1008.9 sets south 20.2 feet
244.5 " " 4.9 "

Counting back on $\frac{1}{16}$ line - 27-139-26

at 53483, $\frac{1}{16}$ post sets east 304 feet.

4846 sets east 275.40 feet ✓
4476.8 " " 254.5 " ✓
3484.6 " " 198.1 " ✓
2572.6 " " 146.2 " ✓
1530.8 " " 27.01 " ✓

Hub 942.4 which is the
intersection of east and
west line - from the

80

narrow - sets east 53.57 feet
Which junkies work on west
side of Crooked Lake.
Smouletta

Sunday May 1 - 1910.

In afternoon I mowed
over the woods, etc. ~~the~~ ^{supper}
at David Stralton's cabin.

Harry Meacham hauled
me from D. Meacham's
place to Egg Lake.

Sec 14 - 139-25

South Boundary

Monday May 2 - 1910.

Hans Stratten, Wm Stratten,

See also, same section

Wm Robinson and 3

Selling on SW cor of 14-139-25

corner which was set by
Curo, 5 min. west on 9th 39th Vae.

40	enter bog
200	ging in bog
400	" "
600	" "
799	hill "
800	pin
1000	pin
1200	pin
1400	pin
1600	pin
1800	pin on hog back.
1823.50	hill on hog back.
2000	pin struck in grass bog
2200	pin
2400	pin
2548.50	hill on hill.
2600	pin

1/4 post - south side of 14-

Nov. notes call for

K&W 12

W&R. 6 S 14 E Hubs = 7.26 feet

W&R 6 N 14 W 19" = 9.24 "

Found SE Birch plainly
marked. Set cor. by flat
measurement.

189-25

~~add on new station~~
 old O.T. when stood as follows
 9° 39' Var.

Stump sink, N 4° 30' W 9.20 feet
 Banki Hole S 5° E 7.25 "

Set a post with new bearings
 as follows - 9° 39' Var.

W side 10 S 3° 30' W 46.85 feet
 W side 10 N 12° 11' W 70.17 feet

Only live trees near that road
 would not cut out.

2623.10 June 1/4 cor sets
 couch 93 feet.

Hub no 2548.3 sets couch
 90.36 feet.

Setting on June 1/4 post
 and bearings corrected.
 hub 2548.0 3 run east.
 7° 40' Var.

160.40 Hub on hog back
 200 pen side of hog back
 400 pen on west side of hog back
 4751 Hub on hog back & strings
 600 pen in valley.
 700 pen on road.
 1000 pen in road bearing
 NW and SE.

189-25

83

~~1200 pin in dead log
 1375.10 stub on hill.
 1400 Pin
 1550 Pin
 1750 Pin
 1943.30 Pin in log on hill stub.
 1950 Pin
 2150 Pin
 2350 pin in log
 2550 pin in log
 2638.10 stub SE cor 14 sets
 north 77.4 feet~~

SE Cor 14 = how notes
 call for - 13-14-23-24
 Tan 3 S 20 W 60 lbs = 39.6 feet
 " 6 S 62 1/2 E 110 " = 72.6
 " 10 N 85 E 240 " = 158.4 - 159.6
 W tan 7 N 76 1/2 W 450. = 297.0

We hunted for BT's one
 hour and then quit
 for day
 - Moulton

84

2743.06

Dec. 14 - 139 - 25

Tuesday May 3 - 1910.

Wm Robinson, Wm Stratton,
 Wm Stratton, Success,
 S. Meacham and J. S. Meacham and U. Stratton - chairman
 Found 3 trees, strings badly
 rotted but checked out for
 measurement and courses,
 transit sitting on an old
 surveyor's stake. Couldn't
 find birch - N.W.
 Set a postery flat measure

Cor. 13-14-23-24
8°30' Var

Set new Beaunias as follows

Jan 7	N 82°56'	E	123.15	ft
Jan 6	S 72°52'	E	67	ft
Jan 4	S 27°43'	W	66.50	ft

Sec. 23-139-25

Setting on cor. 3 run
south 7°30' Var

200	pin
400	"
500	with swing
600	pin in swing
800	" " "
1000	" " "
1200	" " "
1201.8	Hub - Jackson old log

Sec. 23 - 139-25

East Boundary

1400 pin in swamp
 1500 loose swamp
 1600 stake in Fleming's
 garden
 1651.70 Hub in garden

Since city Fleming house -
 I got distance around and
 line by right angle triangulation

number no 6.

width $4N 51\frac{1}{2} W 19 = 12.54$ feet.
 W " $6N 65\frac{1}{2} E 50 = 33$ feet.

1651.70 - west 5 feet,
 thence south 80 - feet,
 thence east 15 - feet to
 Hub no 5 1731.70
 1780 enter lake.

Could not find ~~hub~~ M.C.
 no 6 or M.C. no 7, as

I continued line
 south. Got distance
 across lake by
 triangulation - as per
 next page

then walked south to
 SECOR 23 - by following blazes,
 to about where the corner

86

Sec. 23-139-25

Sec. Cor

East Boundary
North

Hub

180

800

Hub No 1731.70

Egg Lake

1405.20

70° 18'

Hub No 3136.90

W. S. Carter

should be. After hunting 87
some time I found a spruce
and a W. B. B. B. B. B.
Then I went back and
continued line south.

Distance across lake =
1405.20 feet - 50' = 1355'
Hub on south shore
of lake = 1405.20 + 1731.70
= 3136.90:

Quit.

= Moulton

Wednesday - May 4 - 1910.

Continuing east boundary of
line 23 - 139 - 25 south.

Severe meadow, see eds,
Dave Stratton, Wm Stratton,
Wm Robinson and J.

200	Pin
400	"
544.70	Hub
600	Pin
800	Pin
869.6	Hub
1000	Pin
1200	Pin
1251.6	Hub
1400	Pin
1600	"
1631.40	Hub
1800	Pin

88

Sec. 23 - 139-25 -
East Boundary.
2000 Pine

Cor 23-24-25-26

W P 6 N 22 E 11 = 72.6 feet

W P 8 N 62 W 29 = 19.14 "

W P 12 S 55 E 29 = 19.14 "

Spr. 8 S 25 W 33 = 21.78 "

Found NE and SW B.T.'s, old
strings - rotten but plainly
marked.

I set a post by flat measurement.

New Bearings as follows, 8030'

Var. - marked new B.T.

Elm 7 S 4° 12' W 49.1 feet

Ash 14 N 75° 19' E 57 feet

7 lake

at 2193.2 feet south line

S E Cor 23 set west 35.60 feet

True length of east line **89**
of Dec. 23 139-25
 $3136.90 + 2193.20 = 5330.1$ feet.

Correcting east line

of 23.

1731.70 sets west 11.56 feet

1780 " " 11.90 "

at 1780 I set a new M.C.
with bearings as follows:

Poplar 10 N 81° 45' E 28.5 feet

Monday Street 18 N 21° 24' W 43 ft

80 3/4' var

1207.8 sets west 8.02 feet

299.2 " " 1.9 "

90

Sec 14 - 139 - 25
South Boundary

$\frac{1}{16}$ Cor. - east $\frac{1}{2}$

Sets at 1319.05 E.

Sets north 38.7 feet.

At 1375.10 $\frac{1}{16}$ cor. sets
 west 56.05 feet.

~~New 13 sets~~ | B.T. 8030' on
 W. 145 60' W - 10.37 ft
 N 125 70' E 35.7 ..

Corrections for South
 Boundary 14-139-25.

East $\frac{1}{2}$ | ~~2638.10~~ - cor
 sets 277.4 feet

1943.30 sets north 57.02

1375.10 " " 40.35

475.10 " " 13.9

West $\frac{1}{2}$

At 2623.10, $\frac{1}{4}$ cor. sets
 south 93 feet.

2548.50 sets south

1823.50 " " 64.65

799.00 " " 29.3

then quit as we were through
 for the present.

Thursday, May 5-10

Said around 3 o'clock
cabin in forenoon.

In afternoon swathed
to send me home place.

Arrived at 5:00 P.M.

made out accounts of
the crew and myself.

Down Board decided to

get up a new petition
covering all roads, including
some new ones.

92

No. of
Station

Back Sight or + sight

Fore-sight or - sight

5348.3 4896

 502.3

94

W + H - Aug 13 - 1910

Rod

NY.

Station	Reading	Instrument	Elevation
0	+ 13	13	
	- 4.22		8.8
	- 6.46		6.54
	- 1.4		11.60
1	+ 5.99	17.59	
	- 5.95		11.64
2	+ 2.00	13.64	
	- 12.47		1.17
	+ 6.90	18.54	
	- 12.58		5.96
3	+ 3.27	9.23	
	- 4.34		4.89
	- 1.12		8.11
4	+ 5.98	14.09	
	- 5.45		8.64
	- 5.67		8.42
	- 0.05		14.04
	- 3.36		10.73
5	6.94 +	12.90	(5.96)

Remarks
Water Seal at line

Bank on line
low place - north
of
of Kuntien's House

J.P.

J.P.

in road front of
Kuntien's

Ht. of Shew-rook yard
marked
ground structure

J.P.

Peg - foot of hill - Francis

J.P.

Peg by Benjamin's ⁱⁿ road
Peg. W. side of road Thornton's

around
Thornton's N.E. Cor. House

Peg in Roar yard
Roar SW cor. Top of concrete
Road. 50 ft south of line
by Roar.

U.C. - side hill of
Francis. Water Seal

96

Station

Reading	ht. Instrument	Elevation
---------	----------------	-----------

5.08

8.37

3.66

2.37

11.79

3.42

8.13

9.42

+7.79

7.79

+1.12

8.91

+7.39

16.30

~~+10.75~~~~10.75~~

W + 1 -

+2.39

14.02

7.1.63

-4.41

9.61

+10.90

20.51

-10.44

10.07

+ 8.10

18.17

Remarks

Forbes Barr ^{Island}
Banks - west of same

7. P.

Pay. at
H. H. H. H.
J. P.

7. P.

Pay at 1/16 Cor.

98

Station	Reading	H.I. 18.17	Elevation
+ 7.71	- 7.71		10.46
+ .55	+ .55	11.01	
	- 5.77		5.24
	- 2.51		8.50
<hr/>			
			11.63
	+ 8.87	20.50	
	- 10.32		10.18
	+ 7.43	17.61	
	- 7.06		10.55
	+ .33	10.88	
	- 2.30		18.58
	- 4.73		

Remarks

J.P.

on hill by Frances

Nail in Benjamin Post

Pay at House

J.P.

Pay at 1/16 cor

Frances - on hill

Nail in Post.

100

Oct. 15 - 1910

Station.	Rod Reading.	H. I.	Elevation.
0	+1.69	13.32	11.63
J.P	-1.52		11.80
1.	+8.46	20.26	
J.P	-8.68		11.58
2.	+6.37	17.95	
J.P	-6.54		11.41
	+2.57	13.98	
	-4.65		9.33
	-5.50		8.48
	-5.50		8.48

Monday - Oct 17 - '10
Tubes and S.

0	+ .82	9.32	8.50 ^{pt}
J.P	-8.94		.38
	+4.17	4.55	.
J.P	-4.10		.45
	+4.13	4.58	.
J.P	-4.33		.25
	+6.06	6.31	.
J.P	-3.59		2.72

Remarks

Road intersection
at Kestlers

Snake

~~Mounds~~

Nail - 1st telephone post
" - short Post - Benz.

South of Thors
in reworked.

snake $\frac{1}{2}$ ft. high
at Robin Foot Bridge

at Bend - Ballisquin

on bank at
Ballisquin

102

Forbes Continued

Station	Rod Reading	HI. Instrument	Elevation
	+3.10	5.82	
IP	-3.58		2.24
	+6.17	8.41	
IP	-5.69		2.72
	+5.26	7.98	
IP	-4.83		3.15
	+5.90	9.05	
IP	-4.14		4.91
	+3.57	8.48	
IP	-4.20		4.28
	+5.60	9.88	
IP	-5.71		4.17
	+5.18	9.35	
IP	-4.09		5.26
	+9.82	15.08	
	-6.54		8.54
	-9.45		5.63
	-9.65		5.43
	-8.85		6.23

Remarks.

End Bend N of Kellogg
N end of Sw. Hole

At Bend by High Bank

Bend - N of Big Bend
S of Banks - Williams

at High Bank 4

75 yds below dam

Water Level Oct 17
1906

Plants in dam

Stones in dam

Rock in dam

104

Station

Rod
Reading

H.I.

Elevation

~~+5.09~~~~13.63~~~~8.54~~~~-2.08~~~~11.55~~~~-5.55~~~~-5.04~~~~-5.20~~~~+2.14~~~~10.14~~~~8.00~~

IP

~~-4.99~~~~5.15~~~~+10.80~~~~15.95~~

IP

~~-1.25~~~~14.70~~~~+4.04~~~~18.74~~

IP

~~-11.48~~~~7.26~~~~+3.21~~~~10.47~~

Remarks.

Water Sevl

$$\begin{array}{r} 89\ 60 \\ 73\ 21 \\ \hline 16\ 39 \end{array}$$

$$\begin{array}{r} 89\ 60 \\ 77\ 16 \\ \hline \end{array}$$

UP. at 1/65

$$\begin{array}{r} 179\ 60 \\ 73\ 21 \\ \hline 106\ 39 \\ 3\ 55 \\ \hline \end{array}$$

$$\begin{array}{r} 90\ 0 \\ 16\ 39 \\ \hline \end{array}$$

$$\begin{array}{r} 106\ 39 \\ 3 \\ \hline 105\ 99 \\ 3\ 55 \\ \hline 102\ 44 \end{array}$$

west of
Paine

$$\begin{array}{r} 179\ 60 \\ 102\ 44 \\ \hline 77\ 16 \end{array}$$

Remarks.

Water Level

Root of WP. at $\frac{6''}{165}$

Swamp

"

"

In road west of
Big White Pine

106

STATION

Rod
Reading

H.I

Elevation

107

Remarks

108

Station

Total
Reading

N.I.

Elevation

Remains 109

110

Station

Rod
Reading

H. I.

Elevation

Reverend

111

112

Station

Rod
Reading

H. I.

Elevation

Remarks

113

114
Station

Reading

H. I.

Elevation

Reviews

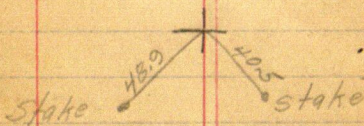
115

118

907+84.5
897+70
1014.5

88908
86044
1014

5.5011 F
124
5397.2



S.R.H No. 83

119

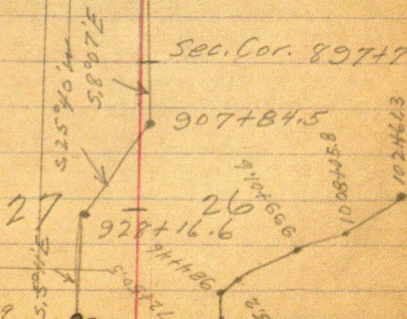
Sec. Cor 792+38

15 5.8055'E 1/4 Cor. 818+70
 14

Sec. Cor. 844+89.5

22 5.7038'E 1/4 Cor. 871+30
 23

Sec. Cor. 897+70



944+49
 945+64
 950+90
 952+60
 954+30

952+60 - 957+00 - 914+00

120

894
894
98.34

22-23-26-27

W. Pine 24 N. 74 E 149 = 98.3'

" " 30 N. 53 W 35 = 23.1'

" " 32 S. 30 E 70 = 46.2'

Y. Pine 29 S. 22 W 90 = 59.4'

N. $\frac{1}{4}$ Cor. Sec. 27

Birch stub 5" S. 51° 45' W. 19.85'

W. P. Stp. 12" N. 70° 19' W. 10.30'

E. $\frac{1}{16}$ Cor.

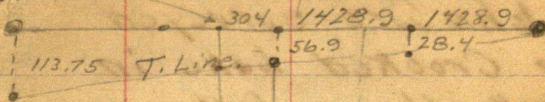
Poplar. 8" N. 23° 18' E 57.7'

Oak 8" S. 70° 44' W. 36.25'

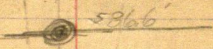
210

stake

5348.3 N. Boundary Sec. 27
5715.5



T. Line.



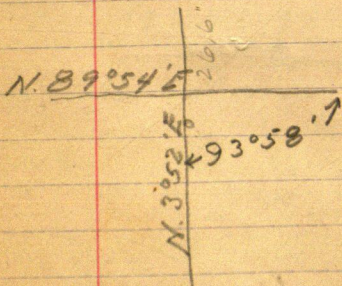
2058.9

87°27'



122

John Guro surveyed
in Crooked Lake in
1909. He was followed
by Moulster who carried
on his work, and run out
the N. Section line and
the east $\frac{1}{16}$ line. F.B. 46



Corner of 22-23-26-27 At this point the notes say
 We find the the NE, NW, and SW stumps but the
 the distance between the NE and SW trees is
 1.85' short and this makes the NE 1.15' short
 and the SW 0.70' short. Set a 5x5x40 post at Corner, after which a stump
 marked by some surveyor stands S.30°34'E. 44.75 to tack head at 8°46' var.
 We run west at 7°30' var.

hubs at 1334.7

2140 enter swamp

2375 lv.

hub at

2503

" "

2719.4

stake

3000

hub

3438.8

" "

3978.6

stake

4300

hub

5005.5

1/4 cor is gone

Curo

173

11/29
S. 89° 51' W

188

Don't use six schoolers on
Mr. W. Morchester.

May 16 / Credit by
Treasurer's warrant \$77.52

190

April 1910

20 Cash ✓ \$25.00

5-6 Board 1.005-7 Fare Emily to C. Lake 50" C. Lake to Regent 1.00" Regent to Pine R. 2.50

9 Telephone 30

Walker Ferry 1.71Cure-Cash 1.0016 Fare to 1.35Telephone 35Board 9.71
2.6011.71

2.89

3.99

191

Expenses

3-19	Gas	.80
"	Today	.14
"	Handkerchiefs	1.00
"	Whisky	.50
"	Summer meals	.45
"	P. R. fare Rock to P. R.	<u>.35</u>
21	P. R. to Rock	.35
29	Soda & Beer	<u>1.55</u>
	March =	<u>4.44</u>

4-2	Drawings B. Mt.	\$1.20
20	Telephone	.25
21	Dinner at Emily	.25
	Gas from Emily to Mechanics	3.00
23	Dinner	.50
21	Fare - P. R. to Emily	<u>8.00</u>
		<u>11.20</u>

192

2 in. + 3 in. Crated
~~to post box of 12 or 13~~
~~in 1/2 mail.~~

1 pt Whisking
+ 1/2 pt Borden's 1/20
~~in 1/2 mail~~
~~in 1/2 mail.~~

Borden's. Plat to be
~~2 1/2 x 36~~

Shell - 1/2 doz - 155

John W. Curo

3-19-10	By Cash for wages	<u>5.00</u>
26	✓	<u>5.00</u>
31	Cash	<u>5.00</u>
Cash in Hand -		<u>15.00</u>

12.56

W. W. W. W.

Aug 27 1 day } J. W. Village
 " 28 1/2 " } Running grasses
~~Oct 29 1 day~~
 " 30 1 day
 " 31 1 "

14-10
 15
 16
 17
 18
 19
 20
 21
 22
 23
 24
 25

24
 18

 19
 24

 32
 32

 11
 100

 100
 20
 20

 40
 20

 20
 35

 90
 76

 120
 184

 80

(1343)

2 yucca cr.

Aug 31 Pay Cash 82.00
 .. check 5.00

210.

~~26~~
~~4-2.~~

$$\begin{array}{r} 3.55 \\ \underline{1.2} \\ 710 \\ 3.55 \\ \hline 4260 \end{array}$$

$$\begin{array}{r} 1.34 \\ \underline{13} \\ 402 \\ \underline{134} \\ 174 \quad 2 \end{array}$$

194

196

2469.5 : 3.65 : : 1960.50

1960.50

365-

980 250

1176 300 2898
588 150

2469.5

7155.8250 (20)

49390

49390

221682

197560

241220

223255

24695-

289

223255-

97560

9390

7137855-

Aug 2
2
30
3
14
15
16
17
18
19
20
21
22
23
24

5 hereby certifying that the services
as recorded in Chick Camp are correct.

Walter, Tenn.

Aug. 5 - 1911

A. W. Moulton

W. G. Co. Purveyor
Chick Camp

69.30	21.00
40.26	109
72	1991.00
	10910750
106.5953	2109.0750
	400

Emergence 180.33

Barb 1040.23

N. 33 - Road 100

Went m.c. no 23 by
 had news from from
 of BT's, after which the
 old BT's stand as follows
 N 15 N 170.5' W 11.88 ft
 N 8 - S 87.49' E 16.50 ft
 mag. var 8° 45'

West Bound. of tree: 19
 runs on mag. var. of 8° 20'

$$G = \frac{b}{2} \sqrt{a^2 - \left(\frac{a^2 + b^2 - c^2}{2b} \right)^2}$$

The product of the sines
multiplied by the number of terms
and divided by 2.

210.30

610.70

1800
2028

2062.8

2000

53.70

5255

2640

33.9

2673.9

2640

6.80

2646.8

263.7

000

423