



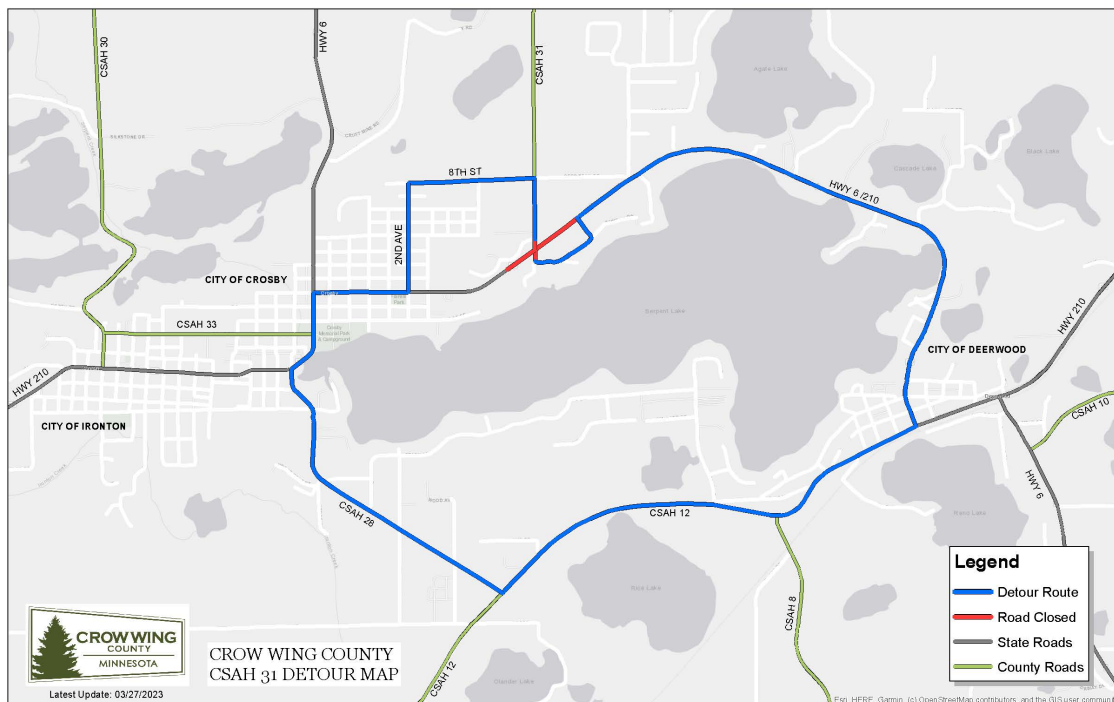
PRESS RELEASE

FOR IMMEDIATE RELEASE
June 13, 2023

TRUNK HIGHWAY (TH) 210 – COUNTY STATE AID HIGHWAY (CSAH) 31 INTERSECTION IMPROVEMENT PROJECT

Crow Wing County has entered into a contract with Anderson Brothers Construction for intersection improvements at TH 210 and CSAH 31 on the east side of Crosby, MN. The intersection will be closed beginning on June 19, 2023, with a detour being established. The detour route will utilize TH 210, CSAH 12, CSAH 28, 2nd Ave. and 8th Street. Businesses in the immediate area will be accessible via the detour route and as signed.

Please feel free to visit the County's website or call the County Highway Department at (218) 824-1110 for additional information on the project listed above or with any questions.



Robert Hall
Assistant County Engineer
Highway Department
16589 County Road 142
Brainerd, MN 56401

Office: (218) 824-1110
Fax: (218) 824-1111
www.crowwing.us

Our Vision: Being Minnesota's favorite place.
Our Mission: Serve well. Deliver value. Drive results.
Our Values: Be responsible. Treat people right. Build a better future.